

INSTRUMENT APPROACH  
CHART (IAC)

ARACAJU / Santa Maria, INTL (SBAR)

AD ELEV: 23'

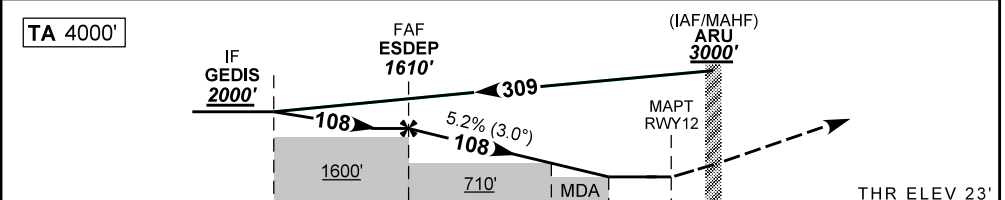
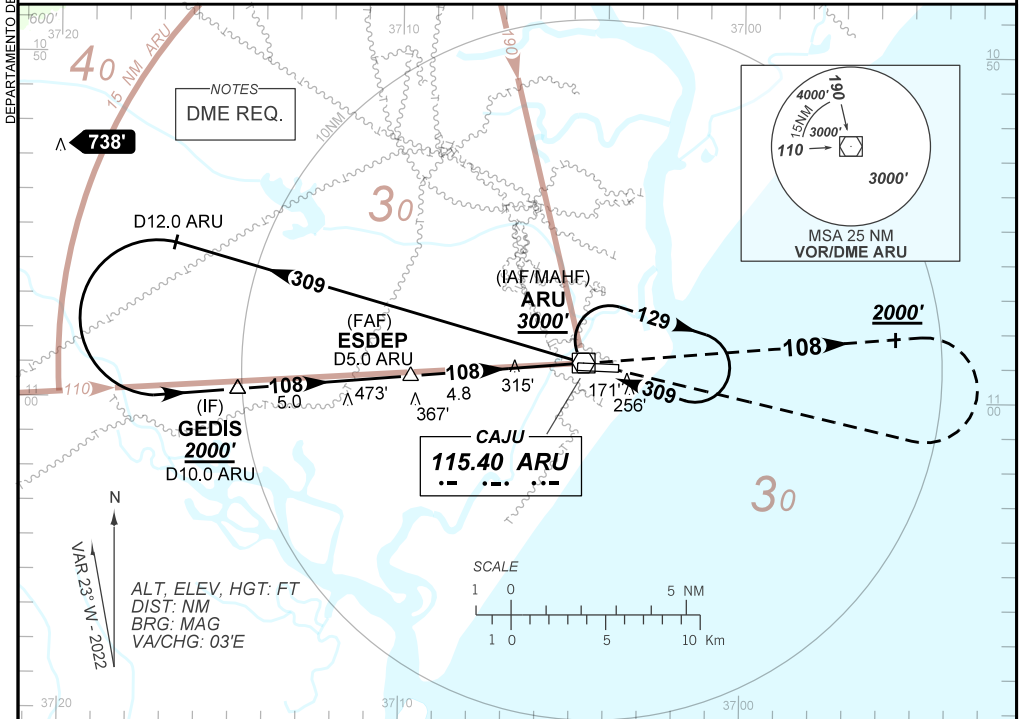
VOR W RWY 12

ATIS NIL	APP ARACAJU 120.30 129.25	TWR ARACAJU 118.80	GNDC NIL
-------------	------------------------------	-----------------------	-------------

VOR ARU 115.40 MHz	FINAL CRS 108°	FAF: 1610'	N/A	VOR MDA / (OCH): 570' / (550')
-----------------------	-------------------	---------------	-----	-----------------------------------

APCH Perdida: Subir para **3000'**. Manter RDL **108** do VOR ARU até cruzar **2000'**. Após, curvar à DIREITA direto ARU para espera.

Missed APCH: Climb to **3000'**. Maintain **108** RDL ARU VOR until passing **2000'**. After, turn RIGHT direct to ARU for holding.



TO THR 12 (NM)	9.8	4.8	2.0	1.6	0.0	THR ELEV 23'
TO ARU (DME)	10.0	5.0	2.2	1.8	0.2	

	ESDEP	4.0	3.0	2.0	1.6	RWY 12	Ground Speed (KT)	090	110	130	150	170	190
		1347	1028	710	570	ALT	FPM	500	600	700	800	900	NA
		1587	1324	1005	687	(HGT)	FAF-MAPT	NA					

STRAIGHT-IN	CAT	A	B	C	D	E
	MDA / (OCH)	570' / (550')				NA
VOR	ALS/NO ALS / RVR ALS (m)	NIL / 1600 / NIL		NIL / 2500 / NIL		NA
	MDA / (OCH)	NA				
CIRCLING	VIS (m)	NA				

AMDT 2306A0 15 JUN 23

SBAR\_IAC\_00D 1/1  
IAC VOR W RWY 12