

**INSTRUMENT APPROACH
CHART (IAC)**

UMUARAMA / Orlando de Carvalho (SSUM)

RNP Z RWY 22

(CAT A, B, C)

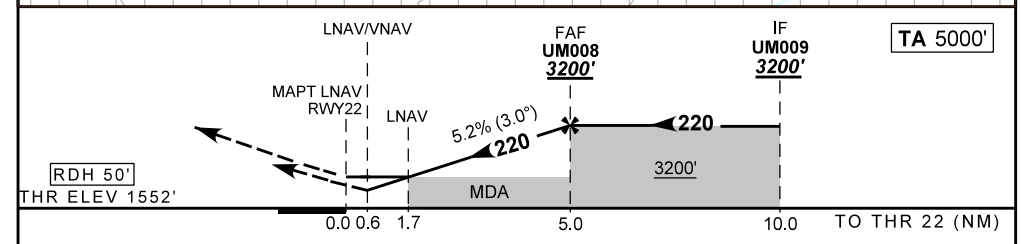
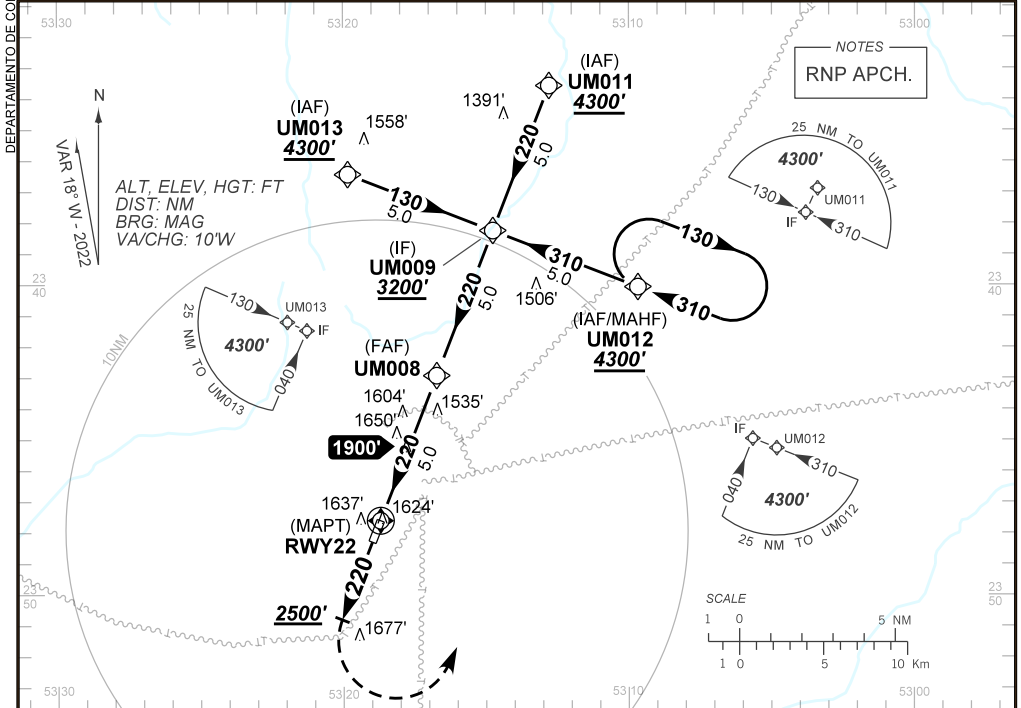
AD ELEV: 1552'

ATIS NIL	ERAA 127.80	APP NIL	TWR NIL	GNDC NIL
-------------	----------------	------------	------------	-------------

TEMP LNAV/VNAV MIN -10°C / MAX 50°C	FINAL CRS 220°	FAF: 3200'	LNAV/VNAV DA / (OCH): 1802' / (250')	LNAV MDA / (OCH): 2150' / (600')
---	--------------------------	----------------------	--	--

APCH Perdida: Subir para **4300'**. Manter rumo **220** até **2500'**. Após, curvar à ESQUERDA direto UM012 para espera.

Missed APCH: Climb to **4300'**. Maintain course **220** until **2500'**. After, turn LEFT direct UM012 for holding.



RWY22	1.7	2.0	3.0	4.0	UM008		Ground Speed (KT)	090	110	130	150	170	190
ALT	2150	2239	2557	2876	3200		FPM	500	600	700	800	900	NA
(HGT)	600	687	1005	1324	1648		FAF-MAPT	NIL					

STRAIGHT-IN	CAT	A	B	C	D	E
	DA / (OCH)	1802' / (250')				
LNAV/VNAV	ALS/NO ALS/ RVR ALS (m)	NIL / 1300 / NIL				
	MDA / (OCH)	2150' / (600')				
LNAV	ALS/NO ALS/ RVR ALS (m)	NIL / 1600 / NIL		NIL / 2700 / NIL		
	MDA / (OCH)					
CIRCLING	MDA / (OCH)					
	VIS (m)	NA				

CHANGES: NEW CHART.

DEPARTAMENTO DE CONTROLE DO ESPAÇO AÉREO