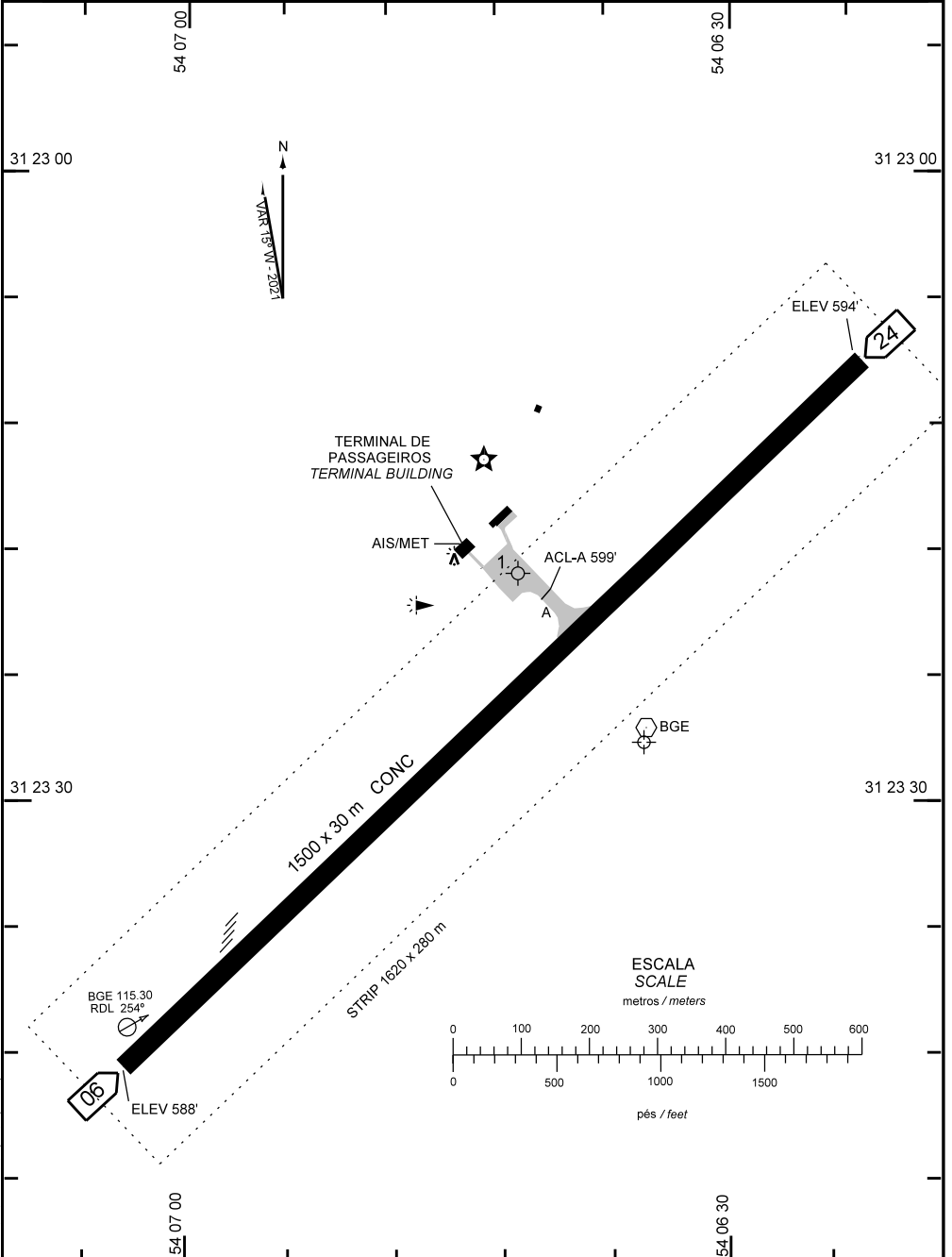


AD ELEV: 611'

ARP S31 23 27 W054 06 35

ATIS NIL	CLRD NIL	GNDC NIL	AFIS 125.85	APRON NIL
-------------	-------------	-------------	----------------	--------------



CHANGES: LAYOUT, RCD, RMK, RWY.

ADC - SBBG: INFORMAÇÕES COMPLEMENTARES / COMPLEMENTARY INFORMATION

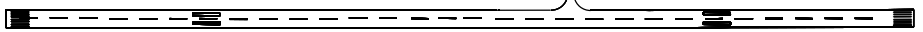
CARACTERÍSTICAS FÍSICAS / PHYSICAL CHARACTERISTICS											
PISTA RUNWAY				DIMENSÕES(m) DIMENSIONS(m)				PCN	TIPO DE SUPERFÍCIE SURFACE KIND		
RWY	BRG MAG	Tipo Type	RCD	RWY	SWY	CWY	STRIP	RWY	RWY	SWY	
a	b	c	d	e	f	g	h	i	j	k	
06	062	NPA	3C	1500x30			1620 x 280	18/R/A/Y/T	CONC		
24	242	NPA	3C								

DISTÂNCIAS DECLARADAS, AUXÍLIOS VISUAIS E COORDENADAS DAS CABECEIRAS DECLARED DISTANCES, VISUAL AIDS AND THRESHOLD COORDINATES							
RWY	TORA(m)	TODA(m)	ASDA(m)	LDA(m)	AUXÍLIOS / AIDS	ALTURA GEOIDAL(m) GEOID HEIGHT(m)	COORDENADAS COORDINATES
06	1410	1410	1500	1410	PAPI	13,12	S31 23 42 W054 07 04
24	1410	1410	1500	1410		13,11	S31 23 09 W054 06 23

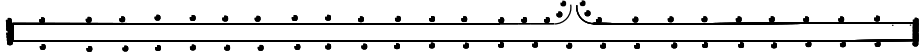
SERVIÇO DE SALVAMENTO E CONTRAINCÊNDIO / RESCUE AND FIRE FIGHTING SERVICE: RFFS REQ - NIL

RWY 06 / 24

Sinalização horizontal / Marking Aids



Auxílios luminosos / Lighting Aids



- RMK:**
- 1 - INS: S31 23.32 / W054 06.70
 - 2 - MEHT: PAPI - RWY 06: 38FT
 - 3 - RWY06 ÚLTIMOS 90M E RWY24 ÚLTIMOS 90M CLSD PARA LDG E TKOF

CHANGES: LAYOUT, RCD, RMK, RWY.