

**INSTRUMENT APPROACH
CHART (IAC)**

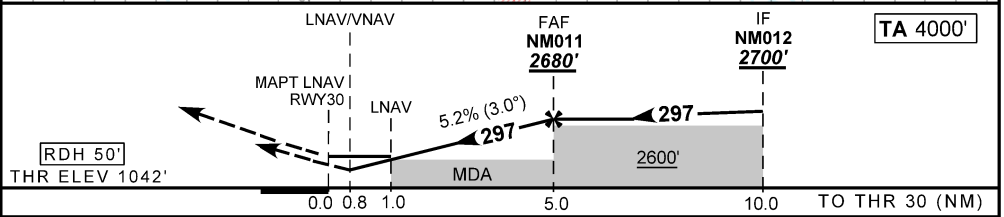
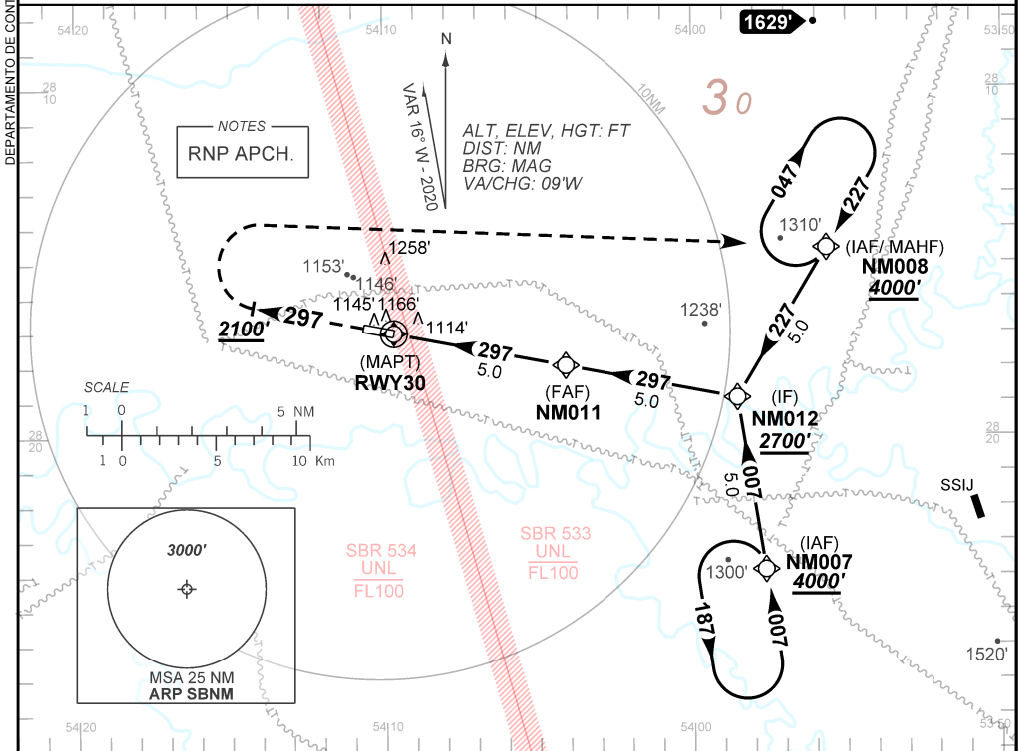
SANTO ÂNGELO / Santo Ângelo (SBNM)

AD ELEV: 1056'

RNP RWY 30

ATIS NIL	APP NIL	AFIS SANTO ÂNGELO 131.65	GNDC NIL
TEMP LNAV/VNAV MIN -10°C / MAX 50°C	FINAL CRS 297°	FAF: 2680'	LNAV/VNAV DA / (OCH): 1343' / (301')
		LNAV MDA / (OCH): 1400' / (360')	

APCH Perdida: Subir para **4000'** no rumo **297'**. Ao passar **2100'**, curvar à DIREITA direto NM008 para espera.
Missed APCH: Climb to **4000'** on course **297'**. On passing **2100'**, turn RIGHT direct to NM008 for holding.



RWY30	1.0	2.0	3.0	4.0	NM011	Ground Speed (KT)	090	110	130	150	170	190
ALT	1400	1729	2048	2365	2680	FPM	500	600	700	800	NA	
(HGT)	360	687	1006	1323	1638	FAF-MAPT	NIL					

STRAIGHT-IN	CAT	A	B	C	D	E
	DA / (OCH)	1343' / (301')				
LNAV/VNAV	ALS/NO ALS/ RVR ALS (m)	NIL / 1400 / NIL				
	MDA / (OCH)	1400' / (360')				
LNAV	ALS/NO ALS/ RVR ALS (m)	NIL / 1600 / NIL				
	MDA / (OCH)	NA				
CIRCLING	MDA / (OCH)	NA				
	VIS (m)	NA				

CHANGES: LAYOUT, MINM OPR