

**INSTRUMENT APPROACH
CHART (IAC)**

NATAL / Campo Augusto Severo, MIL (SBNT)

AD ELEV: 169'

**USO EXCLUSIVO ACFT MILITARES
MILITARY ACFT ONLY**

VOR X RWY 12

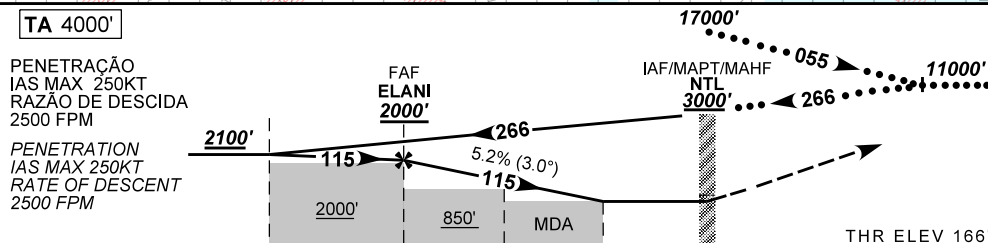
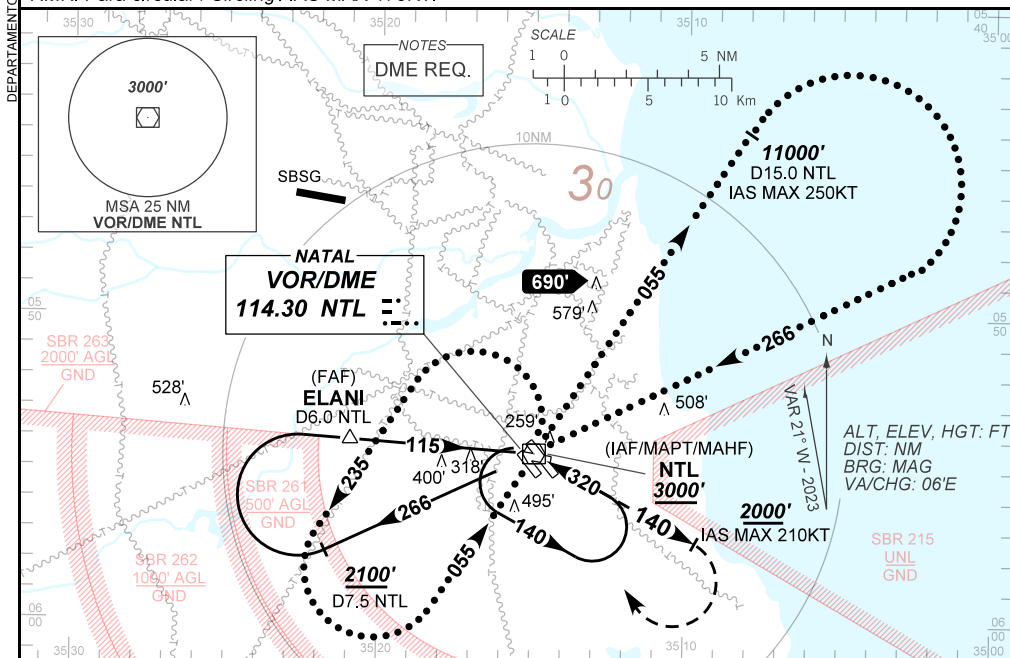
D-ATIS 132.65	APP NATAL 119.30 119.65 120.65 129.80			TWR NATAL 118.70 122.80	GNDC NATAL 121.90
-------------------------	---	--	--	-----------------------------------	-----------------------------

VOR NTL 114.30 Mhz	FINAL CRS 115°	FAF: 2000'	N/A	VOR MDA / (OCH): 570' / (410')
------------------------------	--------------------------	----------------------	-----	--

APCH Perdida: 1) Subir para **3000'**. Manter a RDL **140** do VOR NTL até **2000'**. Após, curvar à DIREITA direto VOR NTL para espera. 2) IAS MAX 210KT até **2000'**.

Missed APCH: 1) Climb to **3000'**. Maintain **140** RDL NTL VOR until **2000'**. After, turn RIGHT direct NTL VOR for holding. 2) IAS MAX 210KT until **2000'**.

RMK: Para circular / Circling: IAS MAX 170KT.



TO THR 12(NM)	7.5	5.6	2.0	1.1	0.0	THR ELEV 166'
TO NTL (DME)	7.9	6.0	2.4	1.5	0.4	

ELANI	4.0	3.0	2.0	1.1	RWY12	Ground Speed (KT)	090	110	130	150	170	190
2000	1490	1171	853	570	ALT	FPM	500	600	700	800	900	1000
1834	1324	1005	687	410	(HGT)	FAF-MAPT	NA					

STRAIGHT-IN	CAT		A		B		C		D		E	
	MDA / (OCH)		NIL / 1600 / NIL		NIL / 1800 / NIL		570' / (410')		NIL / 1800 / NIL		1000' / (830')	
CIRCLING	MDA / (OCH)		800' / (630')		1600		890' / (720')		3200		3600	
	VIS (m)										4800	

AIRAC AMDT 2310A2 05 OCT 23

SBNT_IAC_01U 1/1
IAC VOR X RWY 12

USO EXCLUSIVO ACFT MILITARES / MILITARY ACFT ONLY

DEPARTAMENTO DE CONTROLE DO ESPAÇO AEREO

CHANGES: AD ELEV. MDA. PROC.