

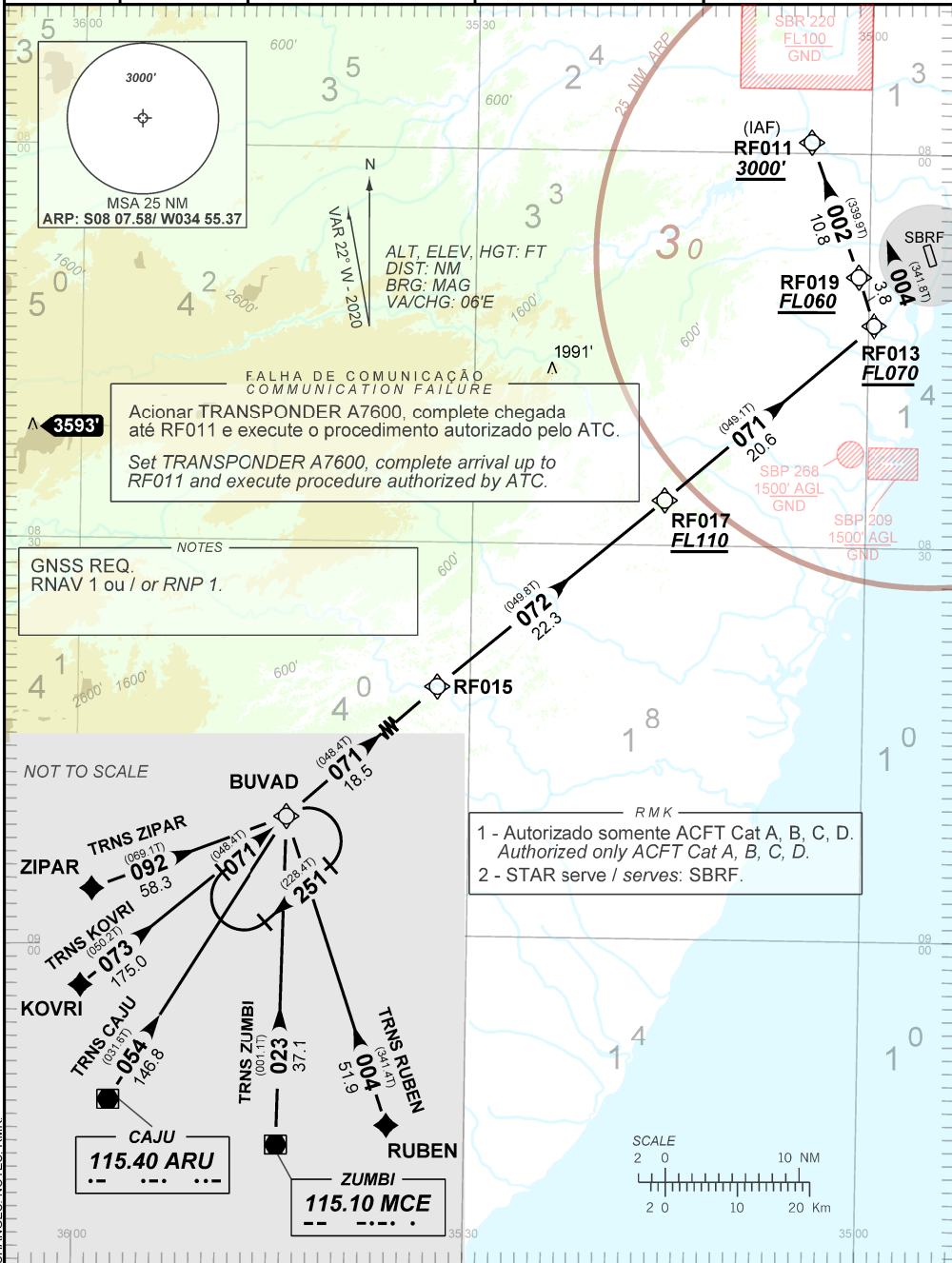
STANDARD ARRIVAL CHART  
INSTRUMENT (STAR)

RECIFE/ Guararapes - Gilberto Freyre, INTL (SBRF)  
RWY 18

RNAV BUVD 1A

AD ELEV: 33'

|                 |                         |  |  |   |
|-----------------|-------------------------|--|--|---|
| <b>TA 4000'</b> | <b>D-ATIS</b><br>127.65 | <b>ACC RECIFE</b><br>128.05 135.80 133.65<br>134.50 121.50 | <b>APP RECIFE</b><br>119.50 119.95 120.40<br>129.60 121.50 | <b>TWR RECIFE</b><br>118.35 125.25<br>122.80 (MIL) 121.50 |
|-----------------|-------------------------|--|--|---|



FALHA DE COMUNICAÇÃO  
COMMUNICATION FAILURE

Acionar TRANSPONDER A7600, complete chegada até RF011 e execute o procedimento autorizado pelo ATC.  
Set TRANSPONDER A7600, complete arrival up to RF011 and execute procedure authorized by ATC.

NOTES

GNSS REQ.  
RNAV 1 ou I or RNP 1.

RMK

1 - Autorizado somente ACFT Cat A, B, C, D.  
Authorized only ACFT Cat A, B, C, D.  
2 - STAR serve / serves: SBRF.

CHANGES, NOTES, RMK