

INSTRUMENT APPROACH CHART (IAC)

VITÓRIA / Eurico de Aguiar Salles, INTL (SBVT)

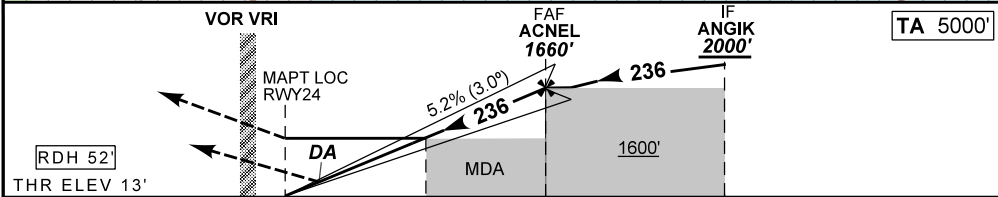
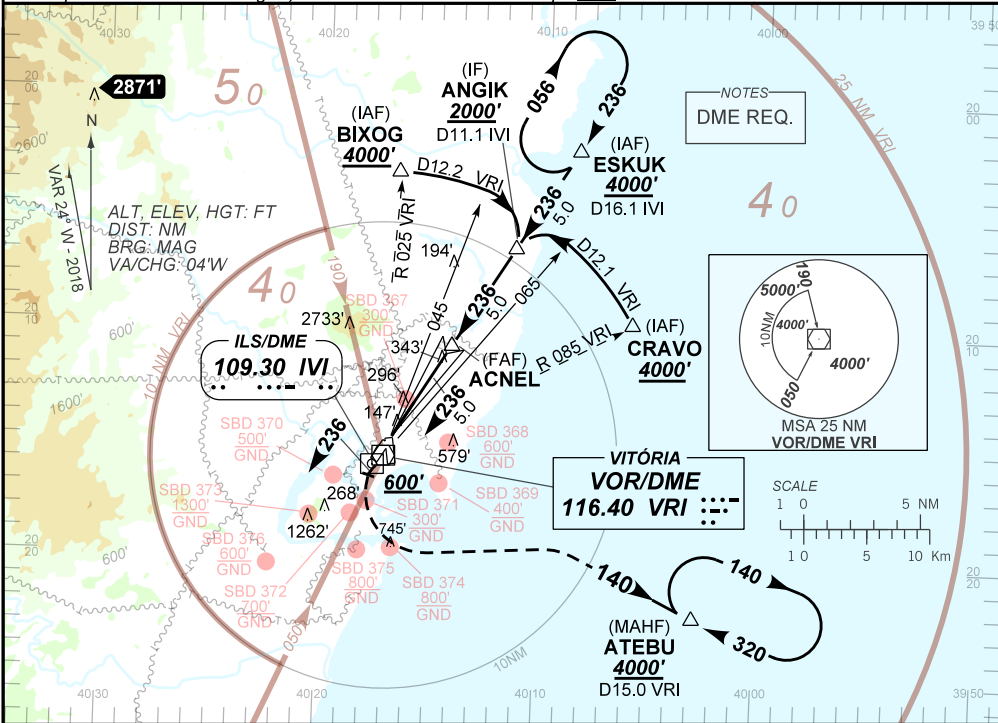
ILS U or LOC U RWY 24

AD ELEV: 34'

ATIS 127.575	APP VITÓRIA 119.85	TWR VITÓRIA 118.10	GNDC VITÓRIA 121.95
LOC IVI 109.30 MHz	FINAL CRS 236°	FAF: 1660'	CAT I DA / (OCH): REFER TO MNM
		LOC MDA / (OCH): 620' / (610')	

APCH Perdida: 1) Subir para **4000'**. Manter RDL **236** do VOR VRI até **600'**. Após, curvar à ESQUERDA RDL **140** do VOR VRI até ATEBU para espera. 2) IAS MAX 210KT até interceptar RDL **140** do VOR VRI.
Missed APCH: 1) Climb to **4000'**. Maintain **236** RDL VRI VOR until passing **600'**. Then turn LEFT **140** RDL VRI / VOR up to ATEBU for holding. 2) IAS MAX 210KT until intercept **140** RDL VRI VOR.

DEPARTAMENTO DE CONTROLE DO ESPAÇO AÉREO



0.0	1.8	5.0	10.0	TO THR 24 (NM)
1.1	2.9	6.1	11.1	TO IVI (DME)

RWY24	1.8	2.0	3.0	4.0	ACNEL	Ground Speed (KT)	090	110	130	150	170	190
ALT (HGT)	620	702	1020	1339	1660	FPM	500	600	700	800	900	NA
	610	689	1007	1326	1647	FAF-MAPT	NA					

STRAIGHT-IN	CAT	A	B	C	D	E
Missed APCH Climb Gradient 4.3%	CAT I	DA / (OCH)		310' / (300')		NA
		ALS/NO ALS/ RVR ALS (m)		NIL / 1400 / NIL		
	CAT I	DA / (OCH)		490' / (480')		
		ALS/NO ALS/RVR ALS (m)		NIL / 2200 / NIL		
	LOC	MDA / (OCH)		620' / (610')		
		VIS (m)	NIL / 2200 / NIL		NIL / 2800 / NIL	

CHANGES: IDENT, MNM OPR.

AIRAC AMDT 2303A1 23 MAR 23

SBVT_IAC_02A 1/1

IAC ILS U or LOC U RWY 24