

STANDARD DEPARTURE CHART  
INSTRUMENT (SID)

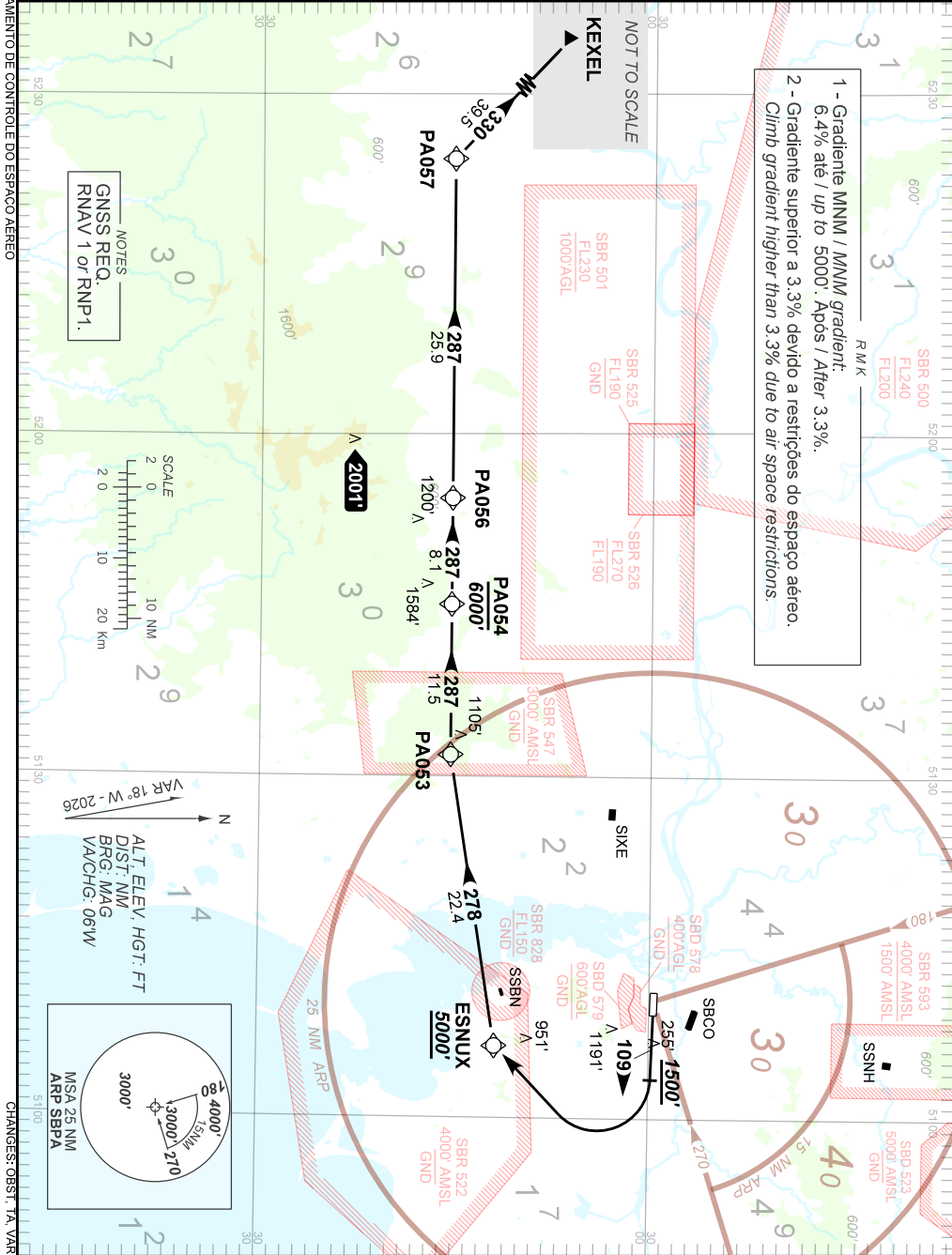
PORTO ALEGRE / Salgado Filho, INTL (SBPA)  
RWY 11

**RNAV KEXEL 2A**

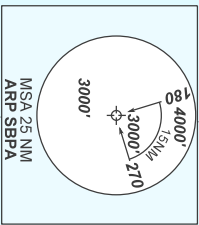
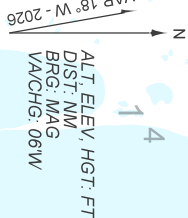
AD ELEV: 30'

TA 10000'	D-ATIS 132.35	TWR PALEGRE 118.10	APP PALEGRE 119.00 120.10 120.55 128.90	ACC CURITIBA 135.90 123.725 126.75 134.25
-----------	---------------	--------------------	--	--

DEPARTAMENTO DE CONTROLE DO ESPAÇO AEREO



NOTES  
GNSS REQ.  
RNAV 1 or RNP1.



1 - Gradiente MNM / MNM gradient:  
6,4% até / up to 5000'. Após / After 3,3%.

2 - Gradiente superior a 3,3% devido a restrições do espaço aéreo.  
Climb gradient higher than 3,3% due to air space restrictions.

CHANGES: OBST., TA VAR.