

**INSTRUMENT APPROACH
CHART (IAC)**

MANAUS / Ponta Pelada, MIL (SBMN)

ILS Y RWY 09

AD ELEV: 257'

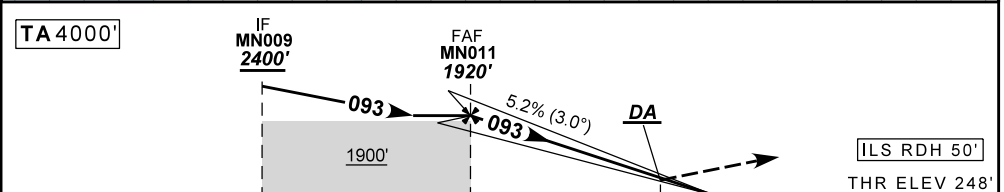
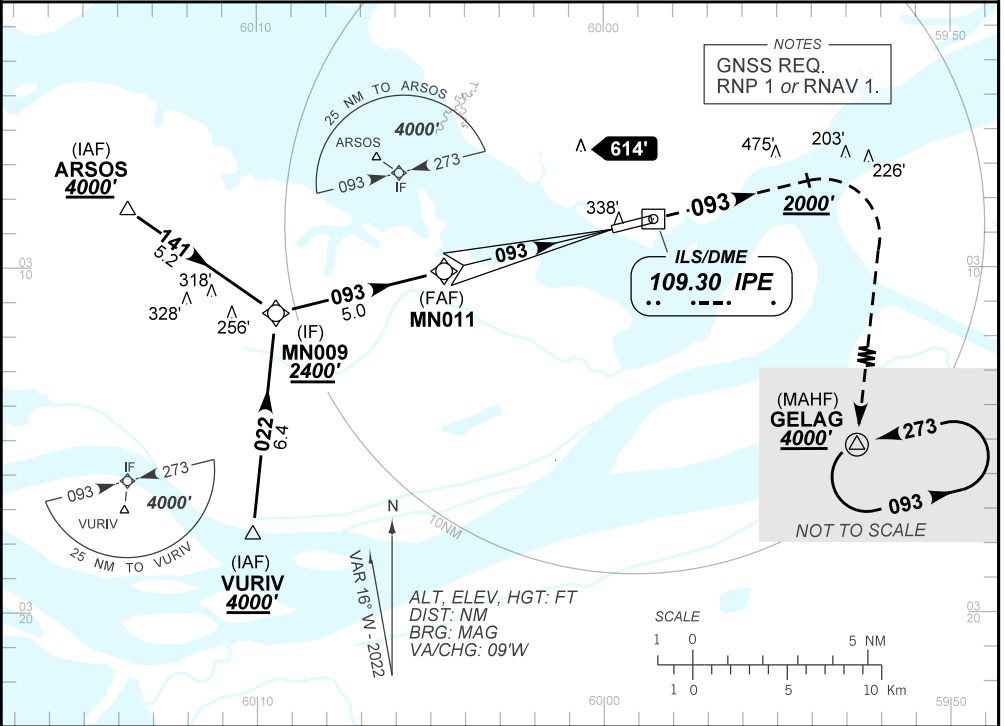
ATIS NIL		APP MANAUS 119.25 119.70 120.40		TWR PONTA PELADA 118.60	GNDC NIL
-------------	--	------------------------------------	--	----------------------------	-------------

LOC IPE 109.30 MHz	FINAL CRS 093°	FAF: 1920'	CAT I DA / (OCH): REFER TO MNM	N/A	
-----------------------	-------------------	---------------	-----------------------------------	-----	--

APCH Perdida: 1) Subir para **4000'** com gradiente MNM 4%. Manter rumo **093** até **2000'**. Após, curvar à DIREITA direto GELAG para espera. 2) IAS MAX 250KT.

Missed APCH: 1) Climb to **4000'** with gradient MNM 4%. Maintain course **093** until **2000'**. After, turn RIGHT direct GELAG for holding. 2) IAS MAX 250KT.

DEPARTAMENTO DE CONTROLE DO ESPAÇO AEREO



TO THR 09 (NM)	10.0	5.0	0.0	THR ELEV 248'
TO IPE (DME)	11.2	6.2	1.2	

NIL	RWY09	Ground Speed (KT)	090	110	130	150	170	190
NIL	ALT	FPM	500	600	700	800	900	1000
NIL	(HGT)	FAF-MAPT	NA					

STRAIGHT-IN	CAT	A	B	C	D	E
CAT I	DA / (OCH)	448' / (200')				517' / (269')
	ALS/NO ALS/ RVR ALS (m)	NIL / 1200 / NIL				NIL / 1300 / NIL
CIRCLING	MDA / (OCH)	NA				
	ALS/NO ALS/ RVR ALS (m)					

CHANGES: HDG. LAYOUT. VAR.

AIRAC AMDT 2211A1 03 NOV 22

SBMN_IAC_01N 1/1
IAC ILS Y RWY 09