

INSTRUMENT APPROACH
CHART (IAC)

RIO DE JANEIRO / Santa Cruz, MIL (SBSC)

VOR Z RWY 05

AD ELEV: 10'

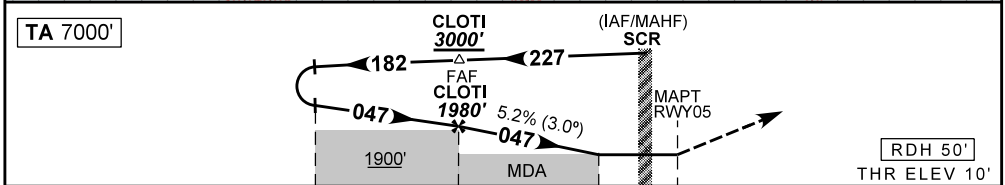
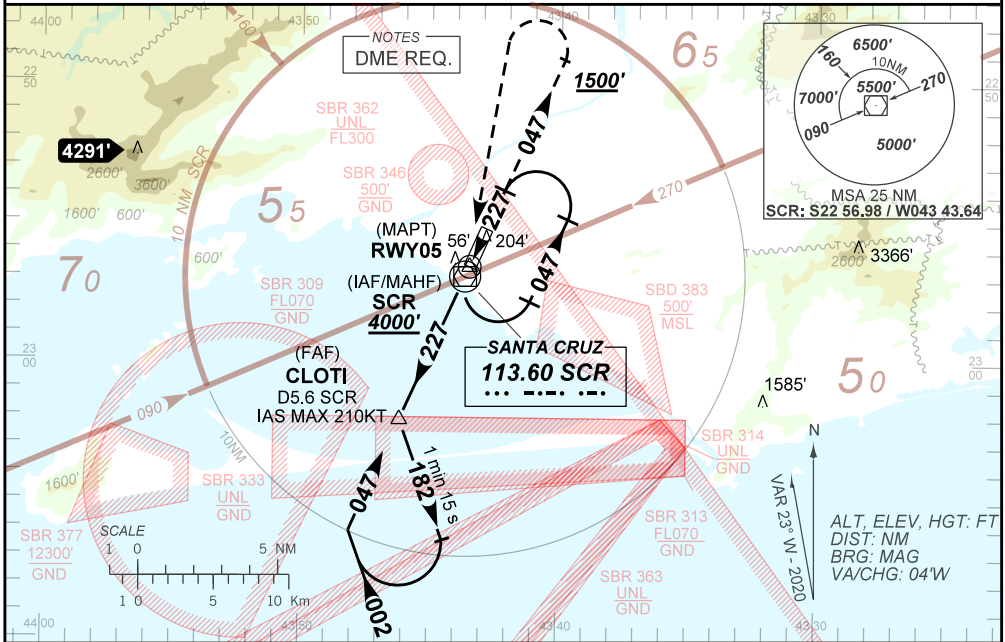
ATIS NIL	APP RIO 133.70 132.50 134.40 121.25 119.00 120.55 124.95 134.95 129.80 125.95 121.50	TWR SANTA CRUZ 118.80 122.90 121.50	GNDC SANTA CRUZ 121.80
-------------	--	--	---------------------------

VOR SCR 113.60 MHz	FINAL CRS 047°	FAF: 1980'	N/A	VOR/DME MDA / (OCH): 460' / (450')
-----------------------	-------------------	---------------	-----	---------------------------------------

APCH Perdida: 1) Subir para **4000'**, manter rumo **047°** até passar **1500'**. Após, curvar à ESQUERDA direito para VOR SCR para espera. 2) IAS MAX 240KT.

Missed APCH: 1) Climb to **4000'**, maintain course **047°** until passing **1500'**. After, turn LEFT direct to SCR VOR for holding. 2) MAX IAS 240KT.

RMK: NIL.



TO THR 05 (NM)	6.0	1.3	0.0
TO SCR (DME)	5.6	0.9	0.4

CLOTI	5.0	4.0	3.0	2.0	1.3	RWY05	KT	90	110	130	150	170	190
1980	1653	1334	1016	698	460	ALT	FPM	500	600	700	800	900	1000
1970	1643	1324	1006	688	450	(HGT)	FAF-MAPT	NA					

STRAIGHT-IN	CAT	A	B	C	D	E
	MDA / (OCH)	460' / (450')				
VOR/DME	ALS/NO ALS/ RVR ALS (m)	800 / 1600 / NIL			1400 / 2100 / NIL	
	MDA / (OCH)	NA				
CIRCLING	MDA / (OCH)	NA				
	VIS (m)	NA				

CHANGES: DEC. FREQ. LAYOUT. MSA. PROC.