

INSTRUMENT APPROACH  
CHART (IAC)

PORTO SEGURO / Porto Seguro (SBPS)

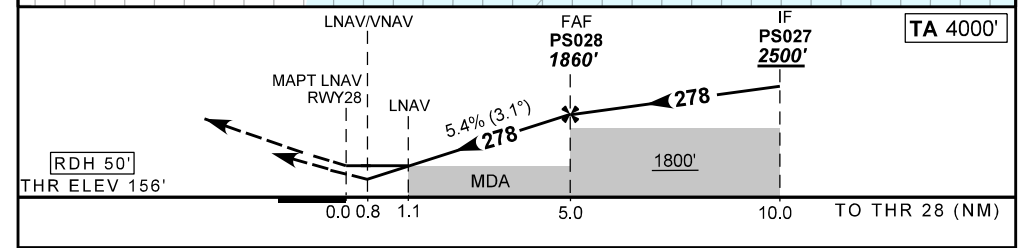
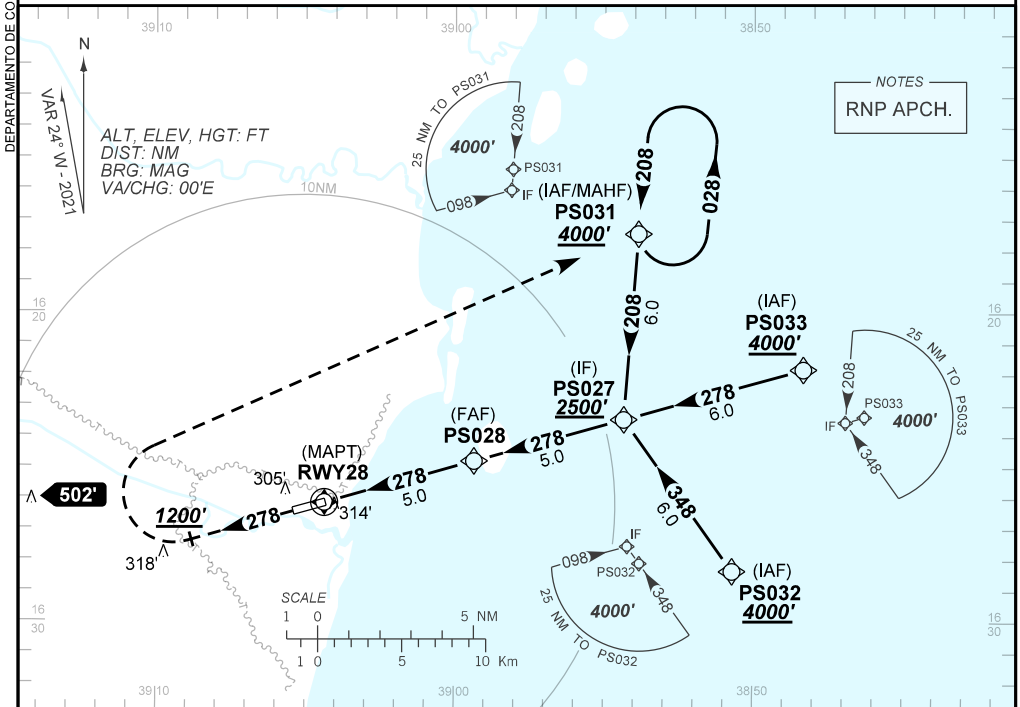
AD ELEV: 169'

RNP Y RWY 28

D-ATIS <b>127.65</b>	APP PORTO SEGURO <b>120.90 119.60</b>	TWR PORTO SEGURO <b>118.85</b>	GNDC <b>NIL</b>
-------------------------	--	-----------------------------------	--------------------

TEMP LNAV/VNAV <b>MIN 0°C / MAX 46°C</b>	FINAL CRS <b>278°</b>	FAF: <b>1860'</b>	LNAV/VNAV DA / (OCH): <b>475' / (319')</b>	LNAV MDA / (OCH): <b>560' / (410')</b>
---	--------------------------	----------------------	---	---

APCH Perdida: Subir para **4000'**. Manter proa **278** até **1200'**. Após, curvar à DIREITA direto PS031 para espera.  
Missed APCH: Climb to **4000'**. Maintain heading **278** until **1200'**. After, turn RIGHT direct to PS031 for holding.



RWY28	1.1	2.0	3.0	4.0	PS028		Ground Speed (KT)	090	110	130	150	170	190
ALT	560	864	1193	1522	1860		FPM	500	600	700	800	900	NA
(HGT)	410	708	1037	1366	1704		FAF-MAPT	NA					

STRAIGHT-IN	CAT	A	B	C	D	E	
	DA / (OCH)	475' / (319')					NA
LNAV/VNAV	ALS/NO ALS/ RVR ALS (m)	NIL / 1400 / NIL					
	MDA / (OCH)	560' / (410')					
LNAV	ALS/NO ALS/ RVR ALS (m)	NIL / 1600 / NIL			NIL / 1900 / NIL		
	CIRCLING	MDA / (OCH)	NA				
	VIS (m)						

CHANGES: D-ATIS; LAYOUT.

DEPARTAMENTO DE CONTROLE DO ESPAÇO AEREO