

**INSTRUMENT APPROACH
CHART (IAC)**

PORTO SEGURO / Porto Seguro (SBPS)

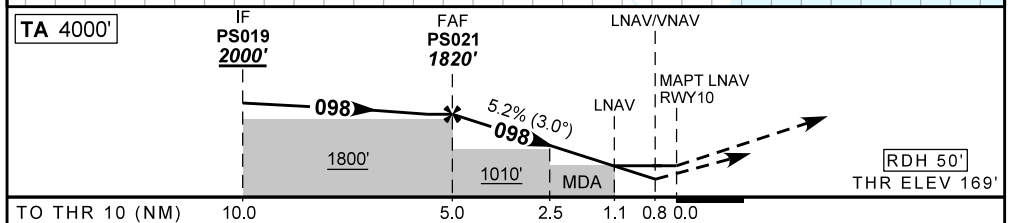
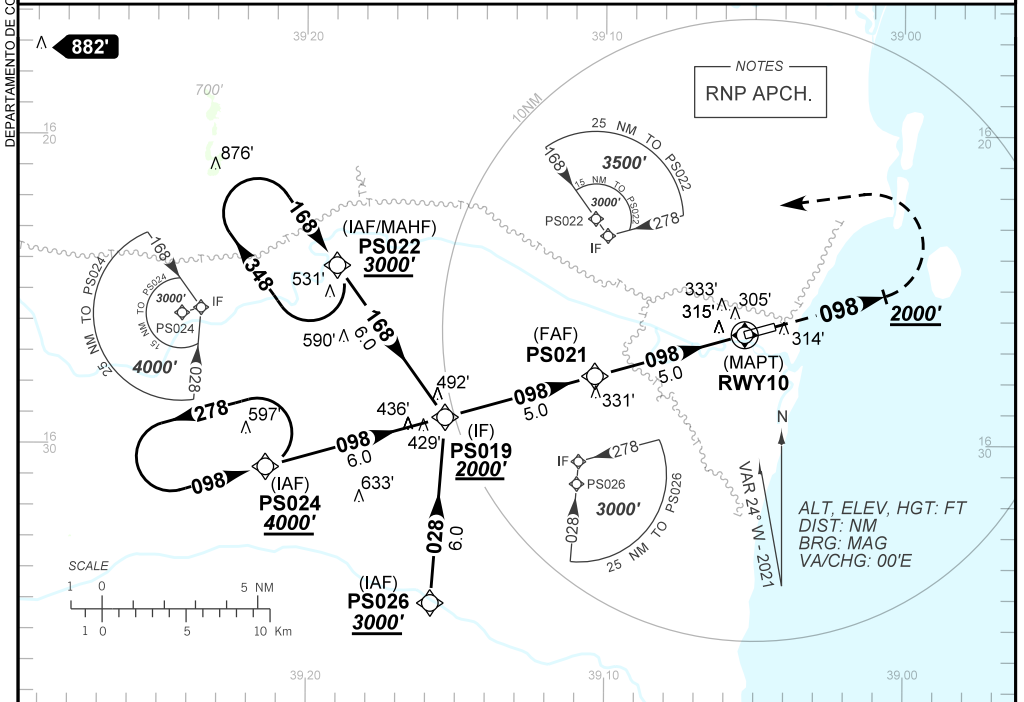
AD ELEV: 169'

RNP Z RWY 10

D-ATIS 127.65	APP PORTO SEGURO 119.60 120.90	TWR PORTO SEGURO 118.85	GNDC NIL
TEMP LNAV/VNAV MIN 0°C / MAX 46°C	FINAL CRS 098°	FAF: 1820'	LNAV/VNAV DA / (OCH): 476' / (307')
		LNAV MDA / (OCH): 570' / (410')	

APCH Perdida: Subir para **3000'**. Manter proa **098** até **2000'**. Após, curvar à ESQUERDA direto PS022 para espera.

Missed APCH: Climb to **3000'**. Maintain heading **098** until **2000'**. After, turn LEFT direct PS022 for holding.



PS021	4.0	3.0	2.5	2.0	1.1	RWY10	Ground Speed (KT)	090	110	130	150	170	190
1820	1493	1174	1010	856	570	ALT	FPM	500	600	700	800	900	NA
1651	1324	1005	841	687	410	(HGT)	FAF-MAPT	NA					

STRAIGHT-IN	CAT	A	B	C	D	E
	DA / (OCH)	476' / (307')				
LNAV/VNAV	ALS/NO ALS/ RVR ALS (m)	NIL / 1400 / NIL				
	MDA / (OCH)	570' / (410')				
LNAV	ALS/NO ALS/ RVR ALS (m)	NIL / 1600 / NIL		NIL / 1900 / NIL		
	MDA / (OCH)	NA				
CIRCLING	VIS (m)	NA				

CHANGES: NIL