

**INSTRUMENT APPROACH
CHART (IAC)**

RIO DE JANEIRO / Galeão - Antônio Carlos Jobim, INTL (SBGL)

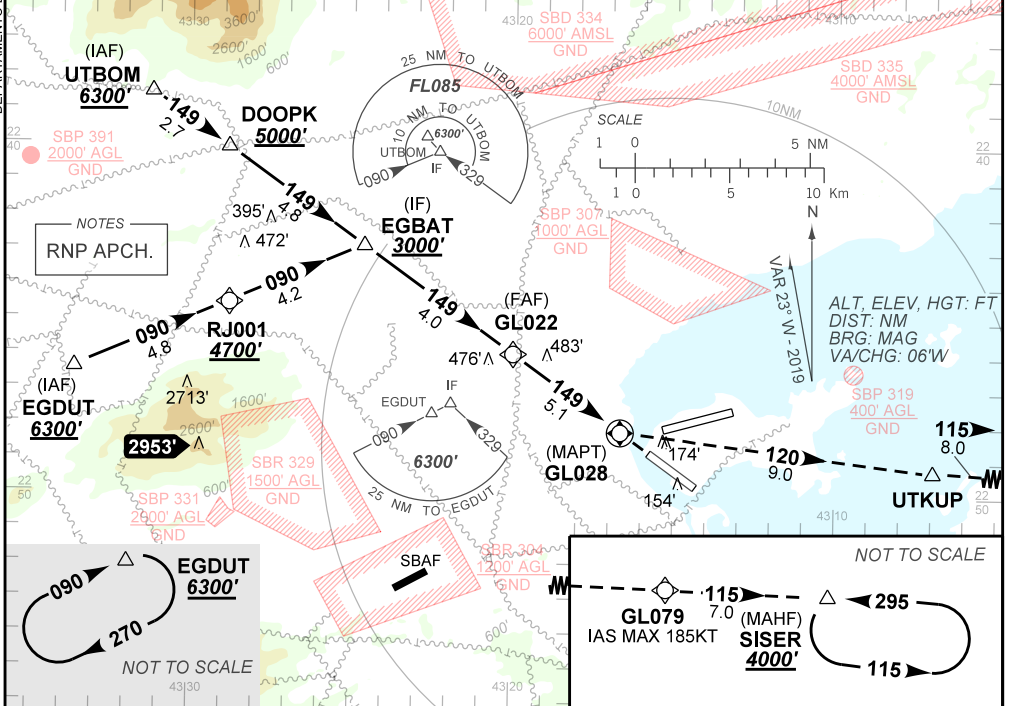
AD ELEV: 28'

RNP Z RWY 15

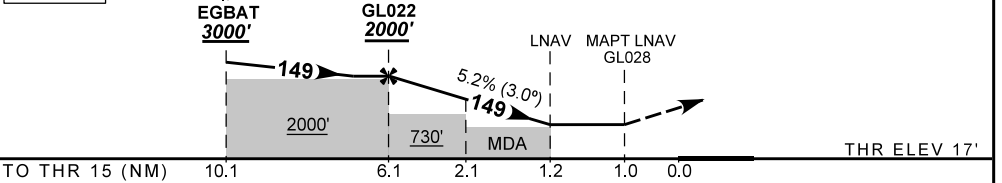
| | | | |
|-------------------------|---|------------------------------------|---|
| D-ATIS 127.60 | APP RIO 126.20 124.95 134.95 133.30 134.40 121.25 129.80 125.95 128.90 119.35 | TWR GALEÃO 118.00 118.20 | GND C GALEÃO 128.35 121.65 |
| N/A | FINAL CRS 149° | FAF: 2000' | LNAV MDA / (OCH): 430' / (420') |

APCH Perdida: Subir para **4000'**. Curvar à ESQUERDA rumo **170** até UTKUP. Após, curvar à ESQUERDA rumo **115** até GL079. Manter rumo **115** até SISER para espera.
Missed APCH: Climb to **4000'**. Turn LEFT course **170** up to UTKUP. After, turn LEFT course **115** up to GL079. Maintain course **115** up to SISER for holding.

DEPARTAMENTO DE CONTROLE DO ESPAÇO AÉREO



TA 7000'



| | | | | | | | | | | | | | |
|--|-------|------|------|-----|-----|-------|-------------------|-----|-----|-----|-----|-----|-----|
| | GL022 | 4.0 | 3.0 | 2.1 | 1.2 | RWY15 | Ground Speed (KT) | 090 | 110 | 130 | 150 | 170 | 190 |
| | 2000 | 1341 | 1022 | 736 | 430 | ALT | FPM | 500 | 600 | 700 | 800 | 900 | NA |
| | 1983 | 1324 | 1005 | 719 | 420 | (HGT) | FAF-MAPT | | | | | | NA |

| | | | | | | | |
|-------------|-------------------------|------------------|---|---|---|-------------------|----|
| STRAIGHT-IN | CAT | A | B | C | D | E | |
| | MDA / (OCH) | 430' / (420') | | | | NA | |
| LNAV | ALS/NO ALS/ RVR ALS (m) | 800 / 1600 / NIL | | | | 1200 / 1900 / NIL | NA |
| | MDA / (OCH) | NA | | | | | |
| CIRCLING | MDA / (OCH) | NA | | | | | |
| | VIS (m) | NA | | | | | |

CHANGES: ALT, EAC, HGT, MDA, OCH