

**INSTRUMENT APPROACH
CHART (IAC)**

JUNDIAÍ / Comandante Rolim Adolfo Amaro (SBJD)

RNP Z RWY 18

(CAT A, B, C)

AD ELEV: 2470'

ATIS NIL	APP SÃO PAULO 119.05 119.25 119.80 120.05 120.45 120.85 122.75 123.25 124.15	TWR JUNDIAÍ 118.75 121.05	GNDC JUNDIAÍ 121.65
--------------------	--	---	-------------------------------

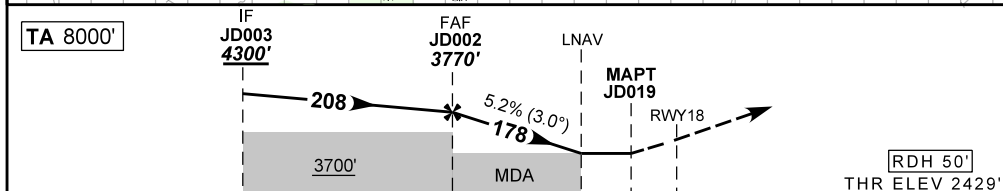
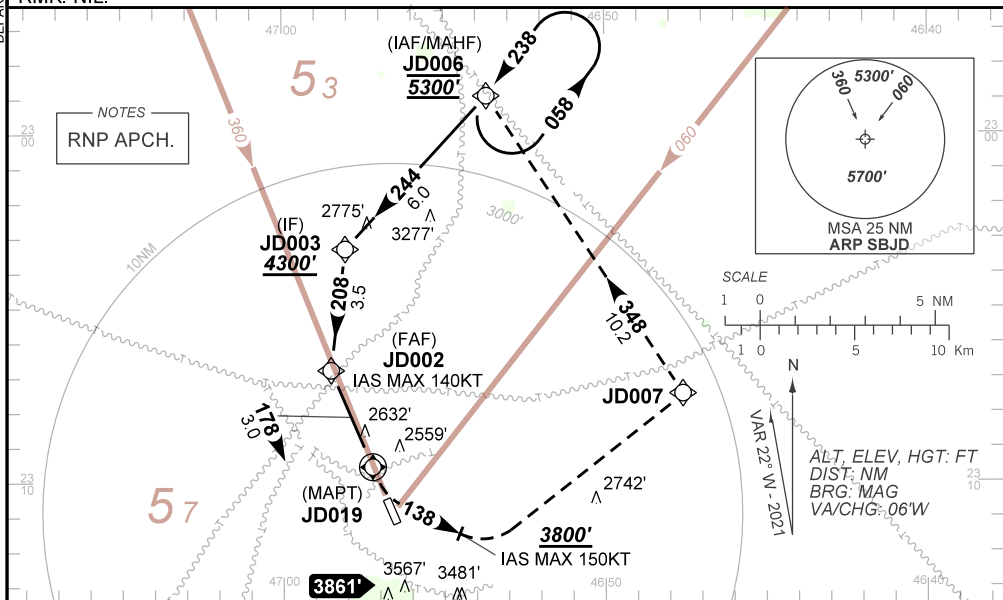
N/A	FINAL CRS 178°	FAF: 3770'	N/A	LNAV MDA / (OCH): REFER TO MNM
------------	--------------------------	----------------------	------------	--

APCH Perdida: 1) Subir para **5300'**, gradiente (*VER MNM). Manter o rumo **138** até **3800'**. Após, curvar à ESQUERDA direto JD007. Curvar à ESQUERDA, rumo **348** até JD006 para espera. 2) IAS MAX 150KT até **3800'**.

Missed APCH: 1) Climb to **5300'**, MNM gradient (*REFER TO MNM). Maintain course **138** until passing **3800'**. After, turn LEFT direct to JD007. After, turn LEFT, heading **348** until JD006 for holding. 2) IAS MAX 150KT until **3800'**.

RMK: NIL.

DEPARTAMENTO DE CONTROLE DE ESPAÇO AÉREO



TO THR 18 (NM)	7.5	4.0	1.0	0.0
TO JD019 (NM)	6.5	3.0	0.0	0.0

	JD002	2.5	1.5	RWY 18	Ground Speed (KT)	090	110	130	150	170	190
	3770	3290	2960	ALT	FPM	500	600	700	800	NA	
	1341	860	530	(HGT)	FAF-MAPT	NIL					

STRAIGHT-IN	CAT	A	B	C	D	E
LNAV	MDA / (OCH)	2960' / (530')				
Missed APCH Climb gradient 5.0%	ALS/NO ALS/ RVR ALS (m)	NIL / 1600 / NIL		NIL / 2400 / NIL		NA
LNAV	MDA / (OCH)	3290' / (860')				
	ALS/NO ALS/ RVR ALS (m)	NIL / 1600 / NIL	NIL / 2000 / NIL	NIL / 2400 / NIL		
CIRCLING	MDA / (OCH)	NA				
	VIS (m)					

CHANGES: NEW CHART.