

**INSTRUMENT APPROACH
CHART (IAC)**

NATAL / Campo Augusto Severo, MIL (SBNT)

AD ELEV: 171'

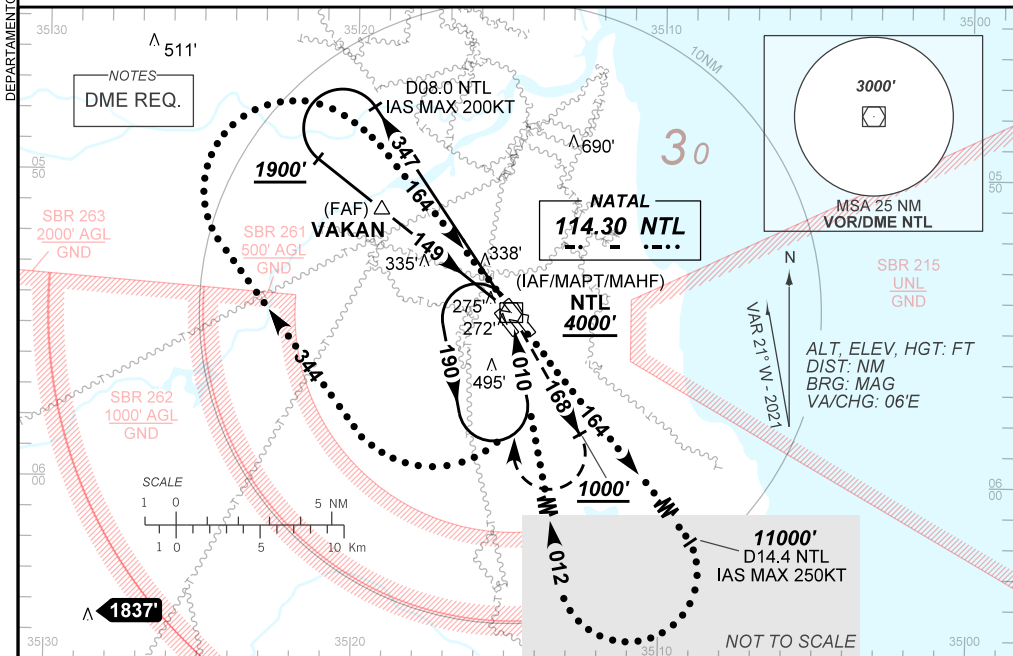
**USO EXCLUSIVO ACFT MILITARES
MILITARY ACFT ONLY**

VOR X RWY 16R

D-ATIS 132.65	APP NATAL 119.30 119.65 120.65 129.80			TWR NATAL 118.70 122.80	GNDC NATAL 121.90
VOR NTL 114.30 MHz	FINAL CRS 149°	FAF: 1800'	N/A	VOR MDA / (OCH): 590' / (430')	

APCH Perdida: 1) Subir para **4000'**. Manter a RDL **168** do VOR NTL até **1000'**. Após, curvar à DIREITA direto VOR NTL para espera. 2) IAS MAX 200KT.

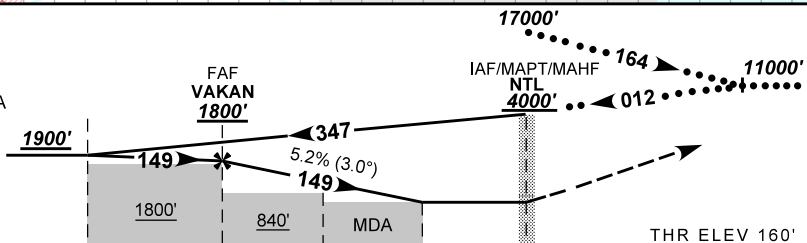
Missed APCH: 1) Climb to **4000'**. Maintain **168** RDL NTL VOR until **1000'**. After, turn RIGHT direct to NTL VOR for holding. 2) IAS MAX 200KT.



TA 4000'

PENETRAÇÃO
IAS MAX 250KT
RAZÃO DE DESCIDA
2400 FPM

PENETRATION
IAS MAX 250KT
RATE OF DESCENT
2400 FPM



TO THR 16R(NM)	7.6	5.0	2.0	1.2	0.0
TO NTL (DME)	8.0	5.4	2.4	1.6	0.4

VAKAN	4.0	3.0	2.0	1.2	RW16R	Ground Speed (KT)	090	110	130	150	170	190
	1800	1484	1165	847	590		ALT	500	600	700	800	900
	1640	1324	1005	687	430	(HGT)	FAF-MAPT	NA				

STRAIGHT-IN	CAT	A	B	C	D	E	
	MDA / (OCH)	590' / (430')					
VOR	ALS/NO ALS/ RVR ALS (m)	NIL / 1600 / NIL			NIL / 2000 / NIL		
	MDA / (OCH)	800' / (640')		890' / (730')		990' / (830')	
CIRCLING	VIS (m)	1600			3200	3600	4800

CHANGES: IDENT, LAYOUT.