

DEPARTURE CHART
INSTRUMENT (SID)

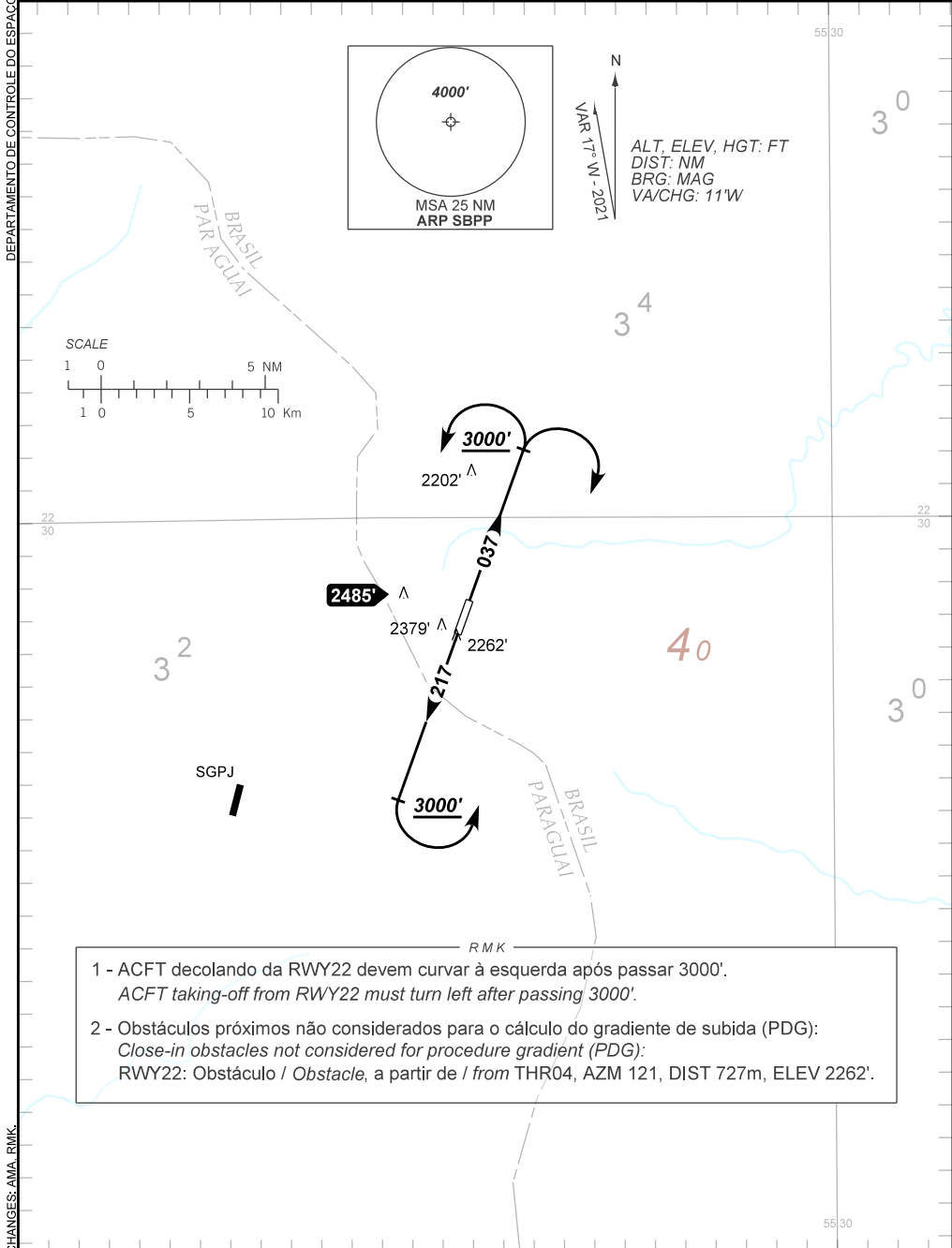
PONTA PORÃ / Ponta Porã, INTL (SBPP)

RWY 04/22

OMNI

AD ELEV: 2156'

TA 4000'	ATIS NIL	AFIS PONTA PORÃ 125.90	APP NIL	ACC CURITIBA 128.35 135.80
----------	----------	------------------------	---------	----------------------------



1 - ACFT decolando da RWY22 devem curvar à esquerda após passar 3000'.
ACFT taking-off from RWY22 must turn left after passing 3000'.

2 - Obstáculos próximos não considerados para o cálculo do gradiente de subida (PDG):
Close-in obstacles not considered for procedure gradient (PDG):
RWY22: Obstáculo / Obstacle, a partir de / from THR04, AZM 121, DIST 727m, ELEV 2262'.

CHANGES: AWA, RMK