

**INSTRUMENT APPROACH CHART (IAC)**

**RECIFE / Guarapes - Gilberto Freyre, INTL (SBRF)**

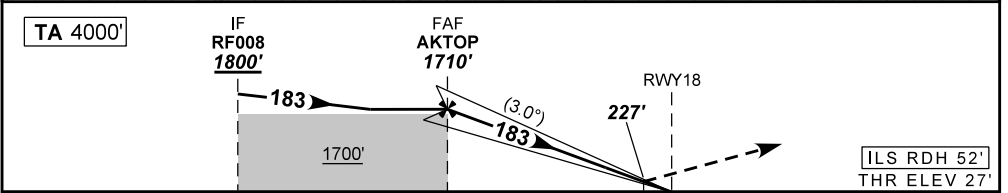
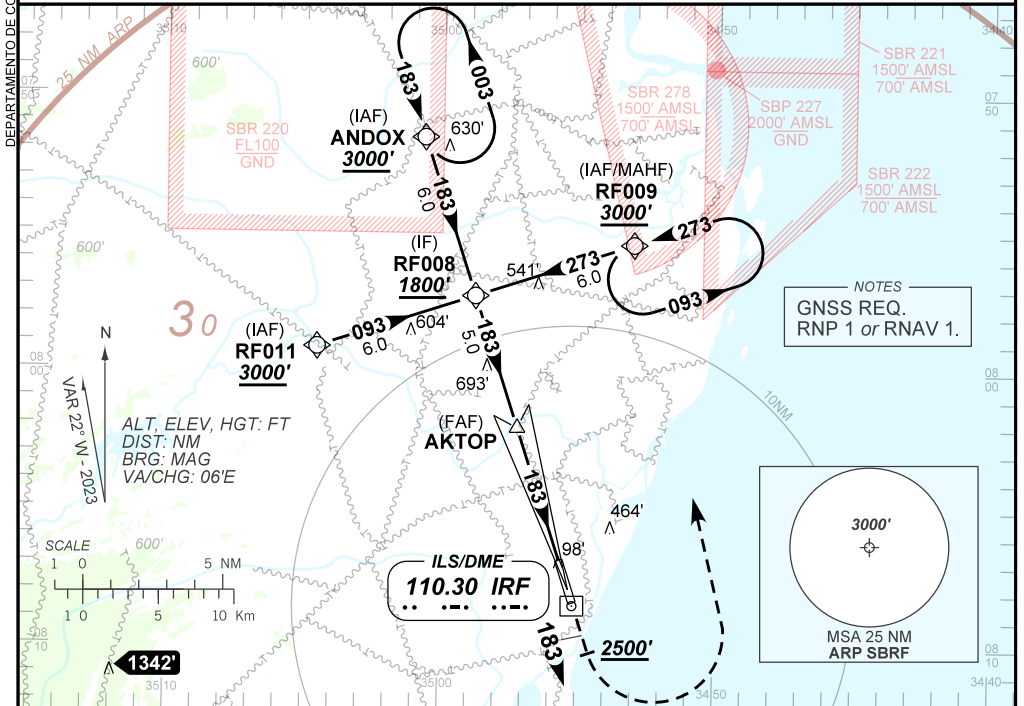
**AD ELEV: 33'**

**ILS W RWY 18**

D-ATIS <b>127.65</b>	APP RECIFE <b>119.50 129.60 120.40 119.95</b>	TWR RECIFE <b>118.35 125.25</b>	GNDC RECIFE <b>121.85</b>
ILS/DME IRF <b>110.30 MHz</b>	FINAL CRS <b>183°</b>	FAF: <b>1710'</b>	CAT I DA / (OCH): <b>227' / (200')</b>
			<b>N/A</b>

APCH Perdida: Subir para **3000'**. Manter proa **183** até **2500'**. Após, curvar à ESQUERDA direto RF009 para espera.

Missed APCH: Climb to **3000'**. Maintain heading **183** until **2500'**. After, turn LEFT direct RF009 for holding.



TO THR 18 (NM)	10.1	5.1	0.5	0.0
TO IRF (DME)	11.7	6.7	2.1	1.6

NIL	RWY 18	Ground Speed (KT)	090	110	130	150	170	190
NIL	ALT	FPM	NIL					
NIL	(HGT)	FAF-MAPT	NIL					

STRAIGHT-IN	CAT	A	B	C	D	E
	CAT I	DA / (OCH)	227' / (200')			NA
		NIL / 1200 / 1100				
CIRCLING	MDA / (OCH)	NA				
	VIS (m)					