

**INSTRUMENT APPROACH
CHART (IAC)**

ARACAJU / Santa Maria, INTL (SBAR)

VOR V RWY 30

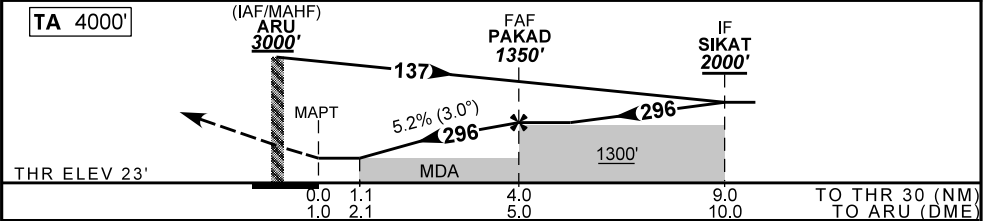
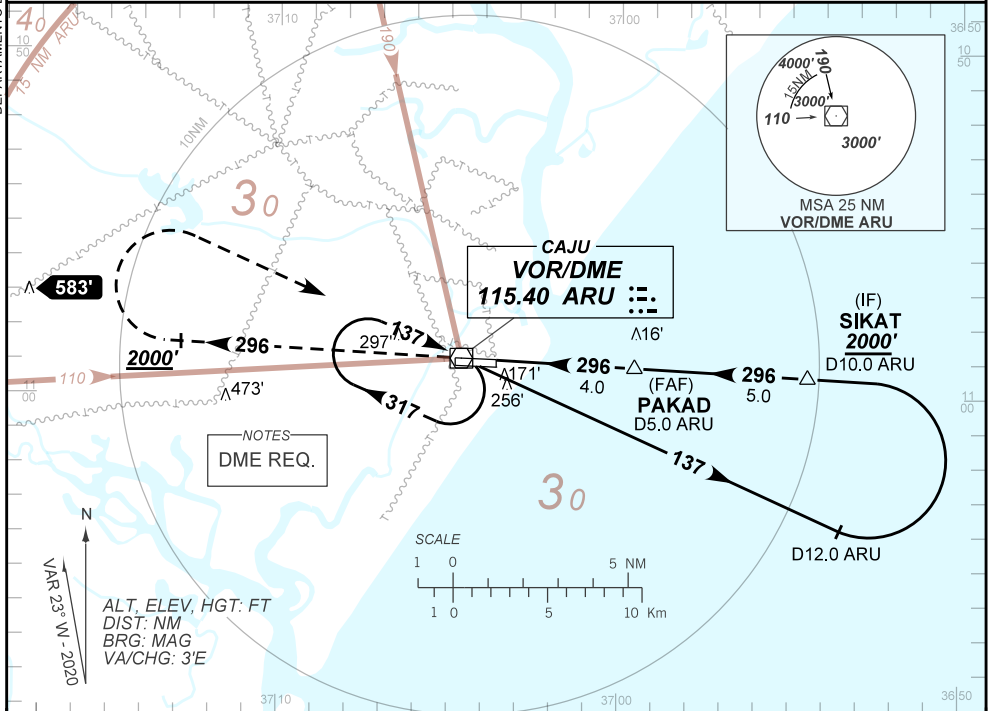
AD ELEV: 23'

ATIS NIL	APP ARACAJU 120.30 129.25	TWR ARACAJU 118.80 118.10	GNDC NIL
VOR ARU 115.40 MHz	FINAL CRS 296°	FAF: 1350'	VOR MDA / (OCH): 420' (400')

APCH Perdida: Subir para **3000'**. Manter RDL **296'** do VOR ARU até cruzar **2000'**. Após, curvar à DIREITA direto VOR ARU para espera.

Missed APCH: Climb to **3000'**. Maintain **296'** RDL ARU VOR until passing **2000'**. After, turn RIGHT direct ARU VOR for holding.

DEPARTAMENTO DE CONTROLE DO ESPAÇO AÉREO



RWY30	1.1	2.0	3.0	PAKAD			Ground Speed (KT)	090	110	130	150	170	190
ALT	420	709	1027	1350			FPM	500	600	700	800	900	NA
(HGT)	400	687	1005	1328			FAF-MAPT			NA			

STRAIGHT-IN	CAT	A	B	C	D	E
	MDA / (OCH)	420' / (400')				NA
VOR	ALS/NO ALS/RVR ALS (m)	NIL / 1600 / NIL				NA
CIRCLING	MDA / (OCH)	NA				
	VIS (m)					

CHANGES: ALT, FREQ, LAYOUT.

AIRAC AMDT 2404A1 18 APR 24

SBAR_IAC_00E 1/1
IAC VOR V RWY 30