

**INSTRUMENT APPROACH  
CHART (IAC)**

**BELO HORIZONTE / Tancredo Neves, INTL (SBCF)**

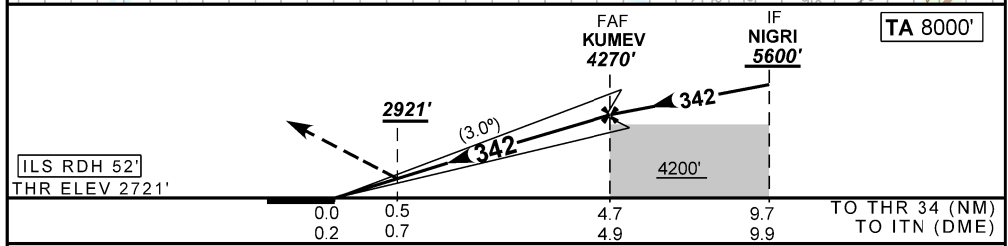
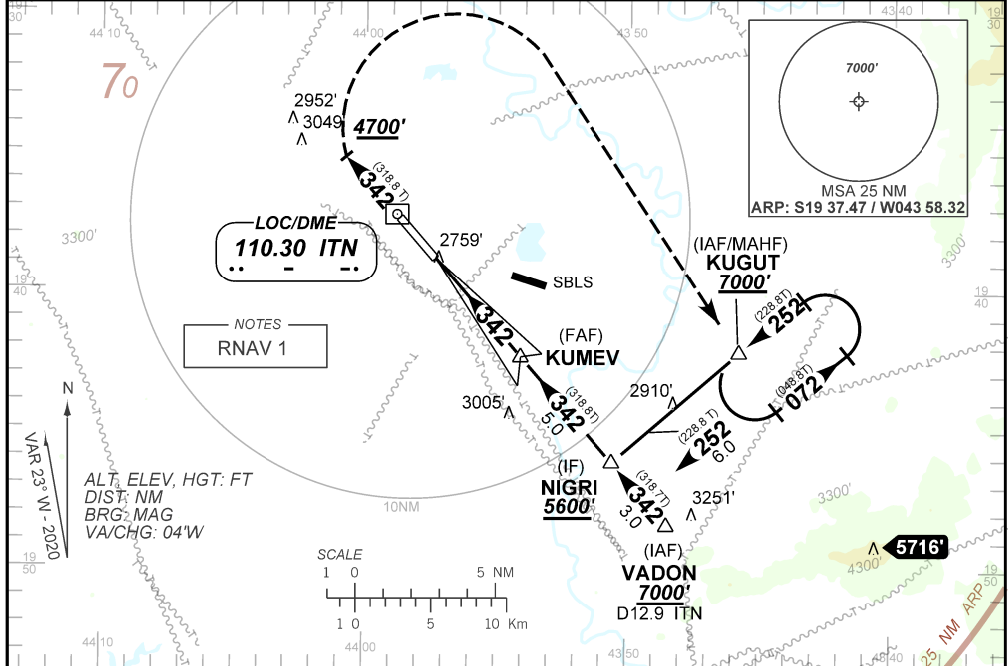
**AD ELEV: 2721'**

**ILS X RWY 34**

D-ATIS <b>127.85</b>	APP BELO HORIZONTE <b>119.10 119.30 119.65 120.20 128.55 129.10 129.40 121.50</b>		TWR CONFINES <b>118.20 121.50</b>	GNDC CONFINES <b>121.90</b>
LOC ITN <b>110.30 MHz</b>	FINAL CRS <b>342°</b>	FAF: <b>4270'</b>	CAT I DA / (OCH): <b>2921' / (200')</b>	N/A

APCH Perdida: Subir para **7000'**. Manter proa **342** até cruzar **4700'**. Após, curvar à DIREITA direto KUGUT para espera.  
Missed APCH: Climb to **7000'**. Maintain heading **342** until passing **4700'**. After, turn RIGHT direct to KUGUT for holding.

RMK: NIL.



RWY34	NIL	KT	090	110	130	150	170	190
ALT	NIL	FPM	NIL					
(HGT)	NIL	FAF-MAPT	NA					

STRAIGHT-IN	CAT	A	B	C	D	E
CAT I	DA / (OCH)	2921' / (200')				NA
	ALS/NO ALS/ RVR ALS (m)	NIL / 1200 / NIL				
CIRCLING	MDA / (OCH)	NA				
	VIS (m)	NA				

CHANGES: NEW CHART