

**INSTRUMENT APPROACH
CHART (IAC)**

NATAL / Augusto Severo, MIL (SBNT)

AD ELEV: 171'

VOR Z RWY 16R

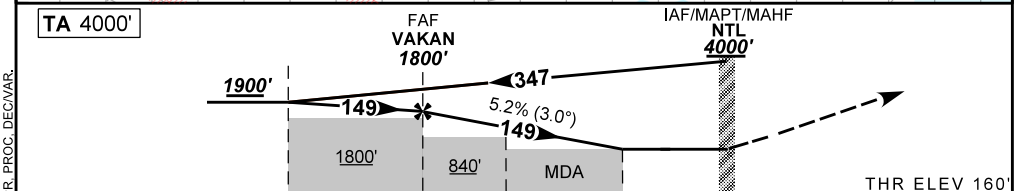
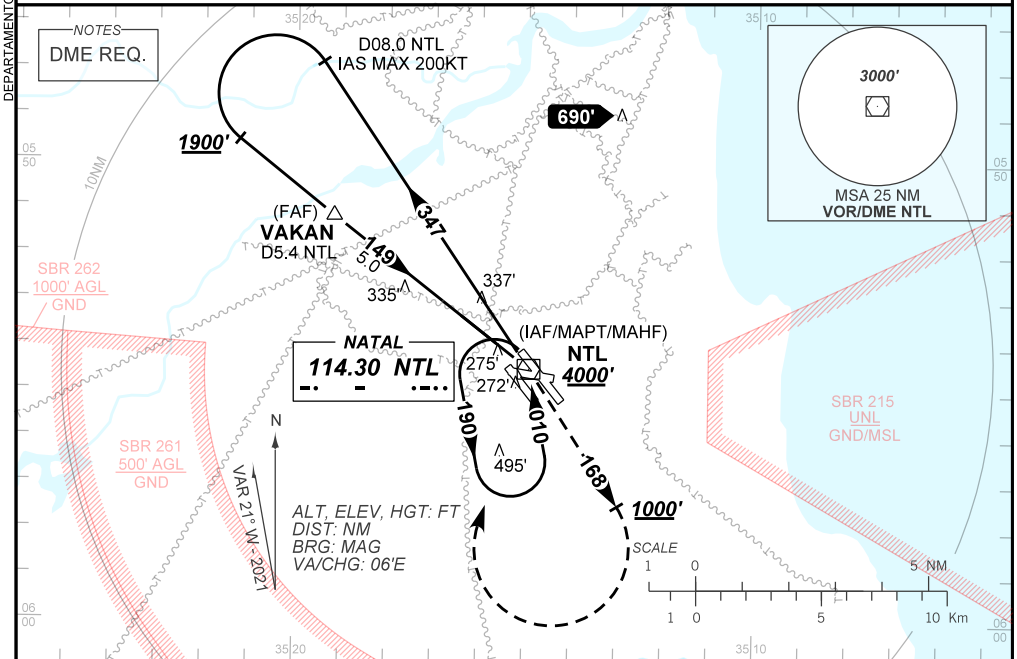
D-ATIS 132.65	APP NATAL 119.30 119.65 120.65 129.80			TWR NATAL 118.70 122.80	GNDC NATAL 121.90
-------------------------	---	--	--	-----------------------------------	-----------------------------

VOR NTL 114.30 MHz	FINAL CRS 149°	FAF: 1800'	N/A	VOR MDA / (OCH): 590' / (430')
------------------------------	--------------------------	----------------------	------------	--

APCH Perdida: 1) Subir para **4000'**. Manter RDL **168** do VOR NTL até **1000'**. Após, curvar à DIREITA direto VOR NTL para espera. 2) IAS MAX 200KT.

Missed APCH: 1) Climb to **4000'**. Maintain **168** RDL NTL VOR until **1000'**. After, turn RIGHT direct to NTL VOR for holding. 2) IAS MAX 200KT.

RMK: NIL.



TO THR 16R (NM)	7.6	5.0	2.0	1.2	0.0
TO NTL (DME)	8.0	5.4	2.4	1.6	0.4

	VAKAN	4.0	3.0	2.0	1.2	RWY 16R	Ground Speed (KT)	090	110	130	150	170	190
	1800	1484	1165	847	590	ALT	FPM	500	600	700	800	900	1000
	1640	1324	1005	687	430	(HGT)	FAF-MAPT	NA					

STRAIGHT-IN	CAT	A	B	C	D	E
	MDA / (OCH)	590' / (430')				
VOR	ALS/NO ALS/ RVR ALS (m)	NIL / 1600 / NIL		NIL / 2000 / NIL		
		NA				
CIRCLING	MDA / (OCH)	800' / (640')		890' / (730')		990' / (830')
	VIS (m)			2000		4800

AIRAC AMDT 2107A1 15 JUL 21

SBNT_IAC_00M 1/1
IAC VOR Z RWY 16R

DEPARTAMENTO DE CONTROLE DO ESPAÇO AÉREO

CHANGES: EAC, FREQ, IDENT, LAYOUT, MNM OPR, PROC, DEC/VAR.