

**INSTRUMENT APPROACH
CHART (IAC)**

NATAL / Campo Augusto Severo, MIL (SBNT)

**USO EXCLUSIVO ACFT MILITARES
MILITARY ACFT ONLY**

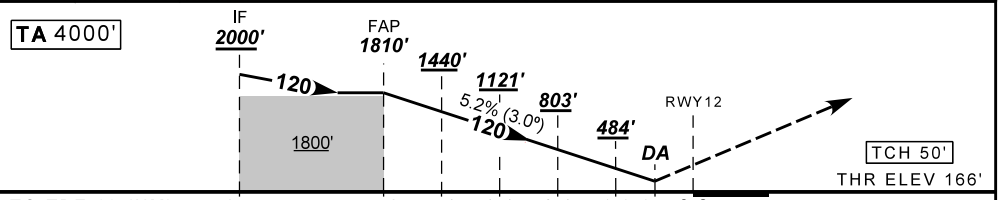
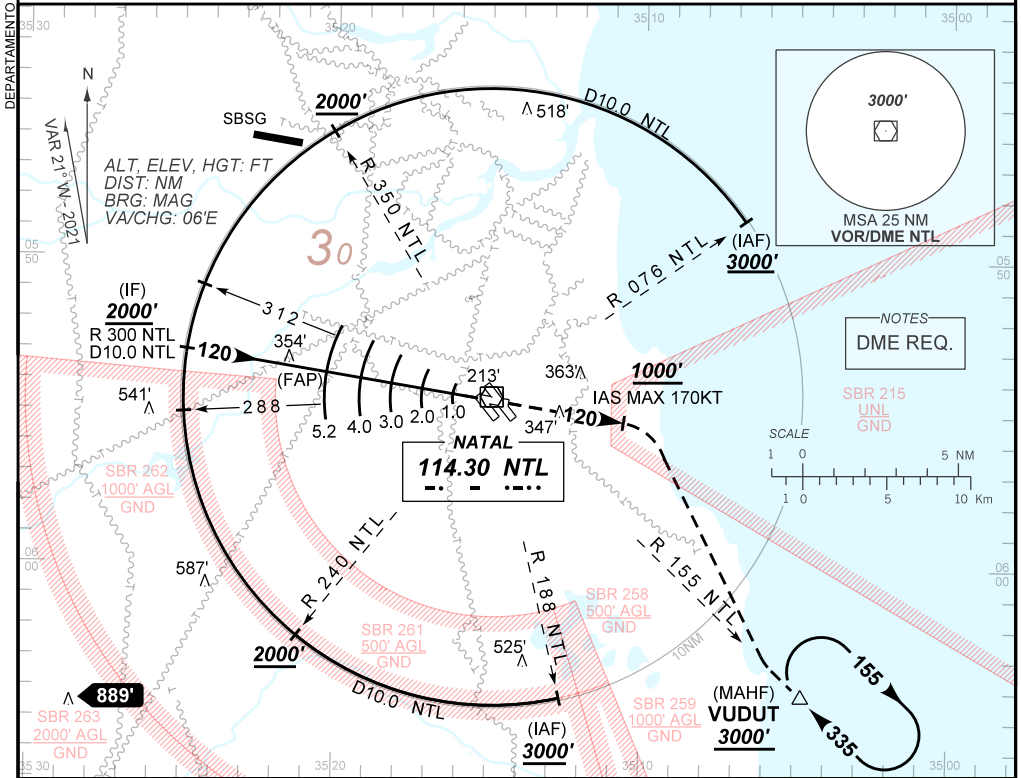
PAR Z RWY 12

AD ELEV: 171'

D-ATIS 132.65	APP NATAL 119.30 119.65 120.65 129.80	PAR NATAL 128.50 132.20	TWR NATAL 118.70 122.80	GNDC NATAL 121.90
N/A	FINAL CRS 120°	FAP: 1810'	PAR DA / (OCH): 392' / (226')	N/A

APCH Perdida: Subir para **3000'**. Manter proa **120** até **1000'**. Após, curvar à DIREITA para interceptar RDL **155** do VOR NTL até VUDUT para espera.

Missed APCH: Climb to **3000'**. Maintain heading **120** until **1000'**. After, turn RIGHT to intercept **155** RDL NTL VOR until VUDUT for holding.



TO TDZ 12 (NM) 9.7 5.2 4.0 3.0 2.0 1.0 0.7 0.2

FAP	4.0	3.0	2.0	1.0	0.7	TDZ12
1810	1440	1121	803	484	392	ALT
1644	1274	955	637	318	226	(HGT)

Ground Speed (KT)	090	110	130	150	170	190
FPM	500	600	700	800	900	1000
FAF-MAPT	NIL					

STRAIGHT-IN	CAT	A	B	C	D	E
LNAV/VNAV	DA / (OCH)	392' / (226')				
ALS/NO ALS/ RVR ALS (m)	NIL / 1200 / NIL					

CHANGES: IDENT, LAYOUT, PROC.

AIRAC AMDT 2202A1 24 FEB 22

USO EXCLUSIVO ACFT MILITARES / MILITARY ACFT ONLY

**SBNT_IAC_01H 1/1
IAC PAR Z RWY 12**