

**INSTRUMENT APPROACH
CHART (IAC)**

CAMPO GRANDE / Campo Grande, INTL (SBCG)

NAV APV RWY 06

(ONLY CAT E)

AD ELEV: 1834'

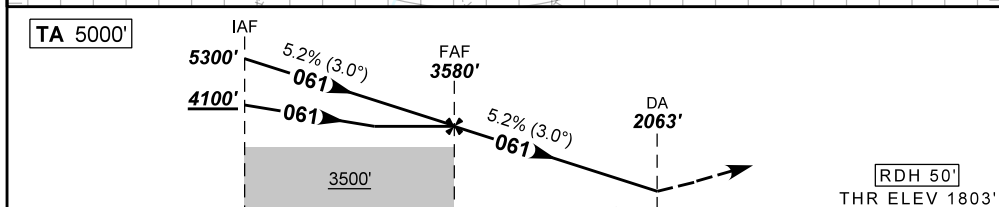
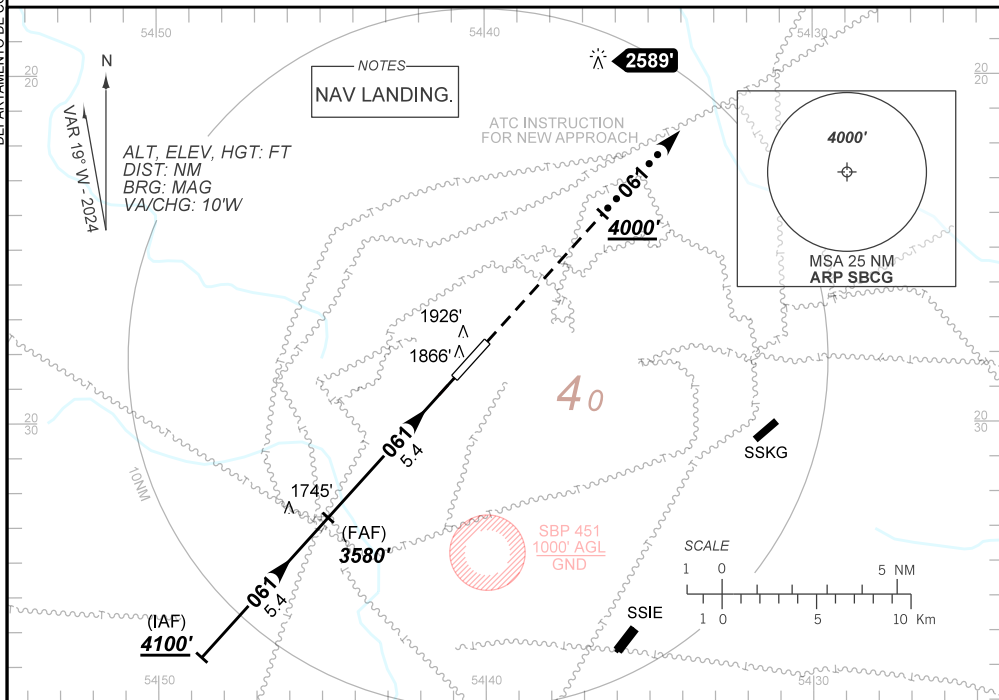
**USO EXCLUSIVO F-39
F-39 USE ONLY**

D-ATIS 127.60	APP CAMPO GRANDE 119.35 119.65 120.20 121.00	TWR CAMPO GRANDE 118.10	GND C CAMPO GRANDE 121.90
-------------------------	--	-----------------------------------	-------------------------------------

TEMP LNAV/VNAV MIN -10°C / MAX 45°C	FINAL CRS 061°	FAF: 3580'	LNAV/VNAV DA / (OCH): 2063' / (260')	N/A
---	--------------------------	----------------------	--	------------

APCH Perdida: Subir para **4000'** no rumo **061°** e aguardar instruções ATC.
Missed APCH: Climb to **4000'** on course **061°** and expect further ATC instructions.

DEPARTAMENTO DE CONTROLE DO ESPAÇO AÉREO



TO THR 06 (NM)	10.8	5.4	0.7	0.0	THR ELEV 1803'
----------------	------	-----	-----	-----	----------------

FAF	5.0	4.0	3.0	2.0	1.0	RWY06	Ground Speed (KT)	090	110	130	150	170	190	
	3580	3445	3127	2808	2490	2171	ALT	FPM	500	600	700	800	900	1000
	1777	1642	1324	1005	687	368	(HGT)	FAF-MAPT	NIL					

STRAIGHT-IN	CAT	ONLY CAT E
	DA / (OCH)	2063' / (260')
NAV APV	ALS/NO ALS/ RVR ALS (m)	1200 / 1300 / 1100
		NA
CIRCLING	MDA / (OCH)	NA
	VIS (m)	NA

CHANGES: NEW CHART.