

**INSTRUMENT APPROACH  
CHART (IAC)**

**SANTO ANTÔNIO DO IÇÁ / Ipiranga (SWII)**

**RNP RWY 19**

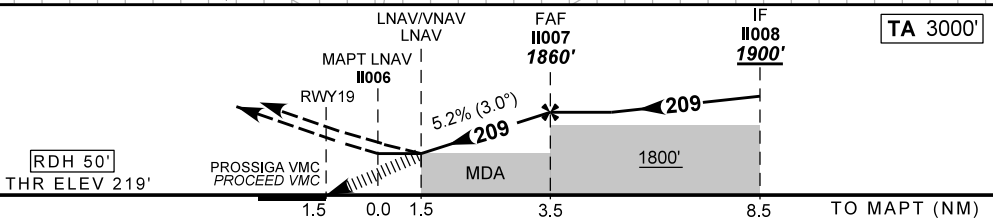
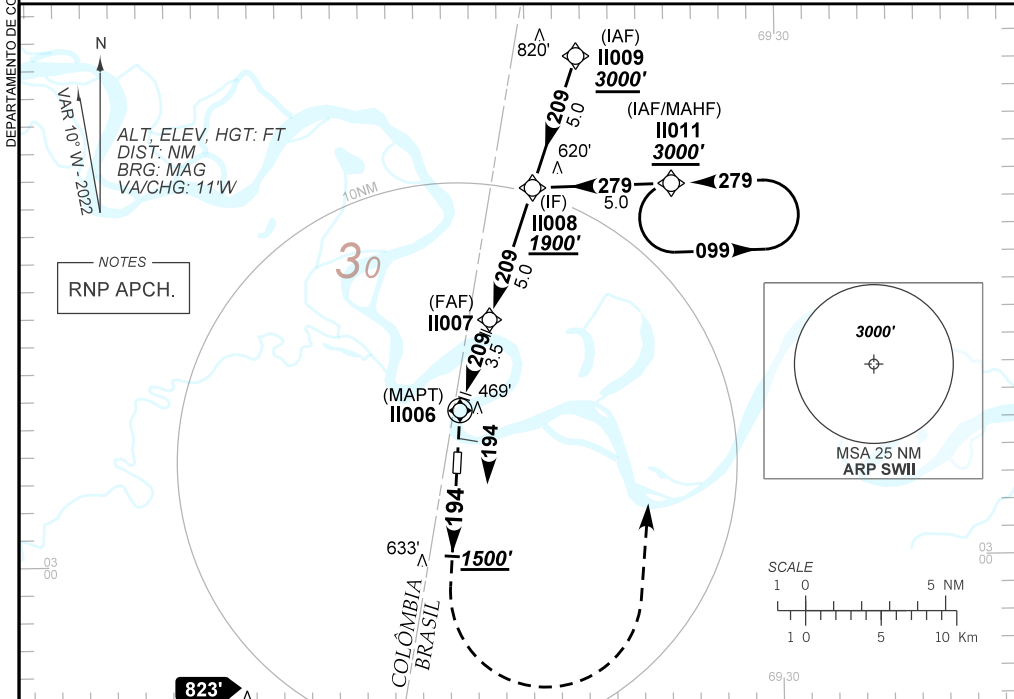
(Cat A, B, C)

**AD ELEV: 221'**

ATIS NIL	ERAA NIL	APP NIL	AFIS NIL	GNDC NIL
TEMP LNAV/VNAV <b>MIN 0°C / MAX 50°C</b>	FINAL CRS <b>209°</b>	FAF: <b>1860'</b>	LNAV/VNAV DA / (OCH): <b>1219' / (1000')</b>	LNAV MDA / (OCH): <b>1220' / (1000')</b>

APCH Perdida: Subir para **3000'**. Manter proa **194** até **1500'**. Após, curvar à ESQUERDA direto I1011 para espera.

Missed APCH: Climb to **3000'**. Maintain heading **194** until **1500'**. After, turn LEFT direct to I1011 for holding.



MAPT	1.5	2.0	3.0	I1007							
ALT	1220	1384	1702	1860							
(HGT)	1000	1165	1483	1641							
					Ground Speed (KT)	090	110	130	150	170	190
					FPM	500	600	700	800	NA	
					FAF-MAPT						

STRAIGHT-IN	CAT	A	B	C	D	E
	DA / (OCH)		1219' / (1000')			
LNAV/VNAV	ALS/NO ALS/ RVR ALS (m)		NIL / 5000 / NIL			
	MDA / (OCH)		1220' / (1000')			
LNAV	ALS/NO ALS/ RVR ALS (m)		NIL / 5000 / NIL			NA
	MDA / (OCH)					
CIRCLING	MDA / (OCH)					NA
	VIS (m)					

CHANGES: NEW CHART.