

INSTRUMENT APPROACH
CHART (IAC)

RIBEIRÃO PRETO / Leite Lopes (SBRP)

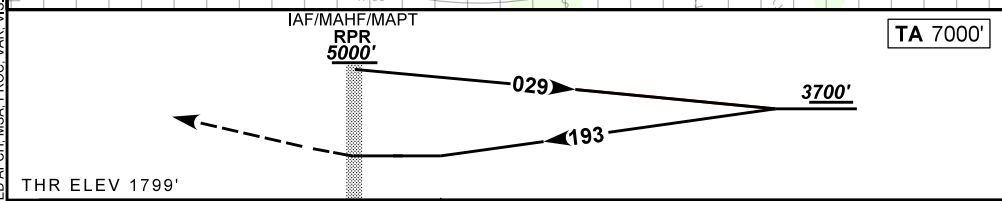
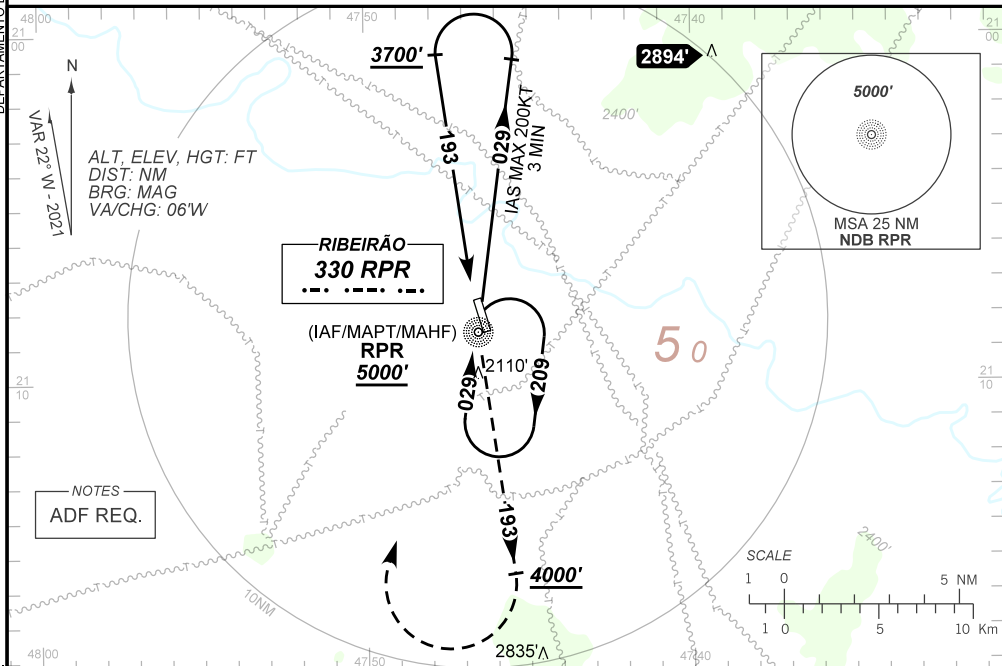
AD ELEV: 1805'

NDB RWY 18

ATIS 127.425	APP ACADEMIA 119.55 119.75 122.40	TWR RIBEIRÃO 118.00	GNDC RIBEIRÃO 121.60
NDB RPR 330 KHz	FINAL CRS 193°	N/A	N/A
		MDA / (OCH): 2830' / (1030')	

APCH Perdida: Subir para **5000'**. Manter QDR **193** do NDB RPR até **4000'**. Após, curvar à DIREITA direto NDB RPR para espera.
Missed APCH: Climb to **5000'**. Maintain **193** QDR RPR NDB until **4000'**. After, turn RIGHT direct to RPR NDB for holding.

RMK: NIL.



RWY18	NIL	Ground Speed (KT)	090	110	130	150	170	190
ALT	NIL	FPM	620			NA		
(HGT)	NIL	FAF-MAPT	NA					

STRAIGHT-IN	CAT	A	B	C	D	E
NDB	MDA / (OCH)	2830' / (1030')				NA
	ALS/NO ALS/ RVR ALS (m)	NIL / 2000 / NIL	NIL / 2400 / NIL	NIL / 4900 / NIL		
CIRCLING	MDA / (OCH)	NA				
	VIS (m)	NA				

DEPARTAMENTO DE CONTROLE DO ESPAÇO AÉREO
CHANGES: AD ELEV, FREQ, LAYOUT, MDA, MISSED APCH, MSA, PROC, VAR, VAS