

STANDARD DEPARTURE CHART  
INSTRUMENT (SID)

RIO DE JANEIRO / Santos Dumont (SBRJ)

RWY 02R

RNAV EVKOX 3A

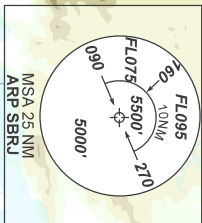
AD ELEV: 10'

TA 7000'	D-ATIS 132.65	TWR RIO 118.70	APP RIO 134.40 121.25 119.725 132.975 125.60 123.90 121.35 124.70	ACC CURITIBA 124.00 125.35 127.05 128.40 133.40 133.60
----------	------------------	-------------------	---	--

DEPARTAMENTO DE CONTROLE DO ESPAÇO AEREO

CHANGES IDENT LAYOUT, PROC, RMK.

- NOTES**  
GNSS REQ.  
RNP 1 or RNAV 1.
- RMK**
- 1 - Autorizado somente ACFT Cat A, B, C.  
Only authorized ACFT Cat A, B, C.
  - 2 - Gradiente MNM de subida: 4.3% até 5000'. Após 3.3%.  
MNM climb gradient: 4.3% until 5000'. After: 3.3%.
  - 3 - Compulsório curva à DIREITA ao passar 500'.  
Compulsory RIGHT turn when passing 500'.



VAR 23° W - 2021

N

ALT. ELEV., HGT.: FT

DIST.: NM

BRG.: MAG

VA/CHG.: 04W

