

STANDARD DEPARTURE CHART
INSTRUMENT (SID)

CURITIBA / Afonso Pena, INTL (SBCT)

RWY 33

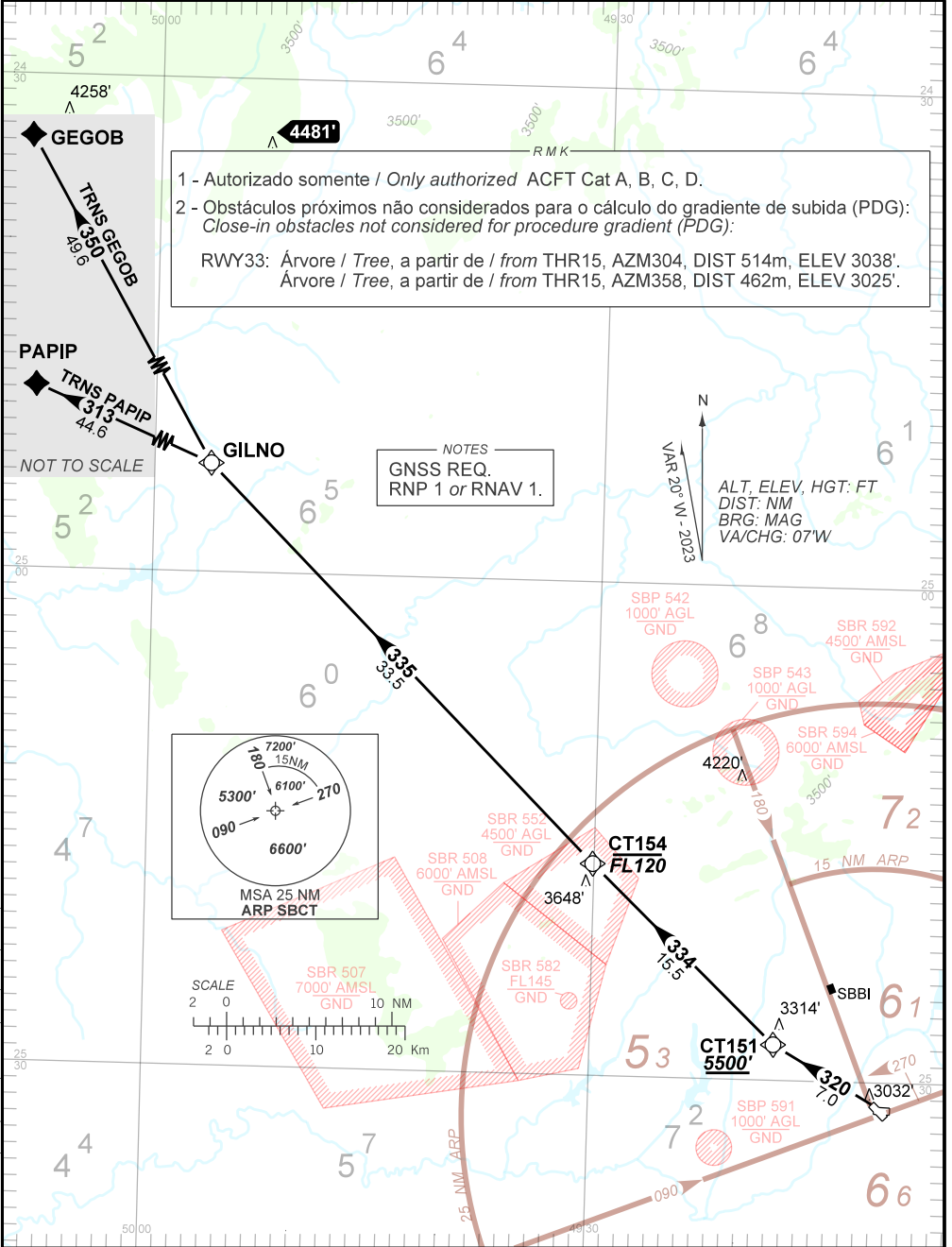
RNAV GILNO 1B

AD ELEV: 2989'

TA 9000'	D-ATIS 127.80	TWR CURITIBA 118.15	APP CURITIBA 119.70 119.95 120.65 120.95 129.55 133.15	ACC CURITIBA 125.80 127.20
----------	------------------	------------------------	--	-------------------------------

DEPARTAMENTO DE CONTROLE DO ESPAÇO AÉREO

CHANGES: AMA, EAC, IDENT, LAYOUT, MSA, OBST, PROC, VAR.



1 - Autorizado somente / Only authorized ACFT Cat A, B, C, D.
 2 - Obstáculos próximos não considerados para o cálculo do gradiente de subida (PDG):
 Close-in obstacles not considered for procedure gradient (PDG):
 RWY33: Árvore / Tree, a partir de / from THR15, AZM304, DIST 514m, ELEV 3038'.
 Árvore / Tree, a partir de / from THR15, AZM358, DIST 462m, ELEV 3025'.

NOTES
GNSS REQ.
RNP 1 or RNAV 1.

