

STANDARD DEPARTURE CHART  
INSTRUMENT (SID)

ARACAJU / Santa Maria, INTL (SBAR)

RWY 30

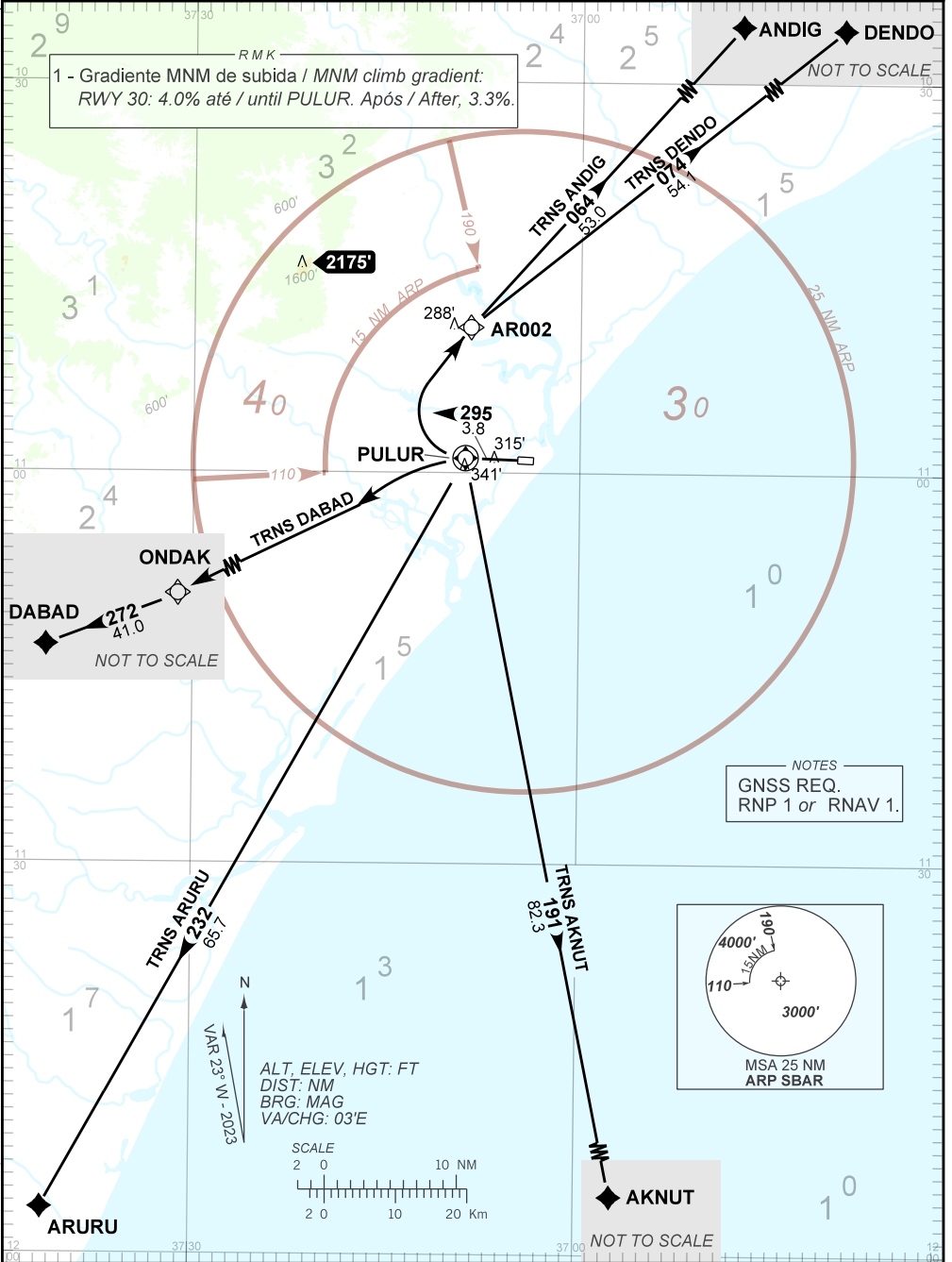
AD ELEV: 23'

RNAV PULUR 2A

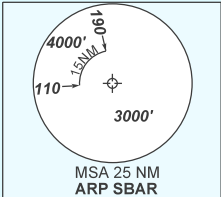
TA 4000'	ATIS NIL	TWR ARACAJU 118.10 118.80	APP ARACAJU 129.25 120.30	ACC RECIFE 125.45 126.85 133.65 134.50
----------	----------	---------------------------	---------------------------	--

DEPARTAMENTO DE CONTROLE DO ESPAÇO AÉREO

RMK  
1 - Gradiente MNM de subida / MNM climb gradient:  
RWY 30: 4.0% até / until PULUR. Após / After, 3.3%.



NOTES  
GNSS REQ.  
RNP 1 or RNAV 1.



ALT, ELEV, HGT: FT  
DIST: NM  
BRG: MAG  
VA/CHG: 03'E

