

**INSTRUMENT APPROACH
CHART (IAC)**

PARNÁIBA / Prefeito Doutor João Silva Filho (SBPB)

AD ELEV: 23'

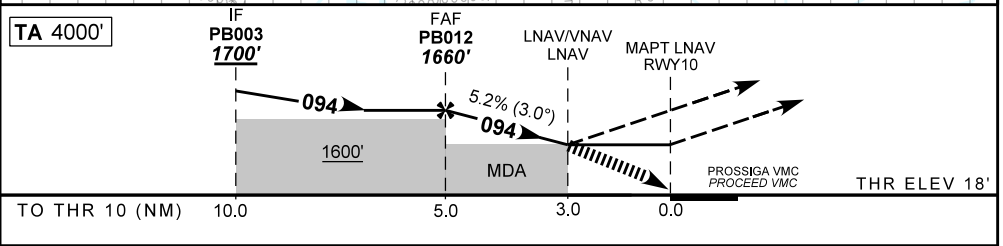
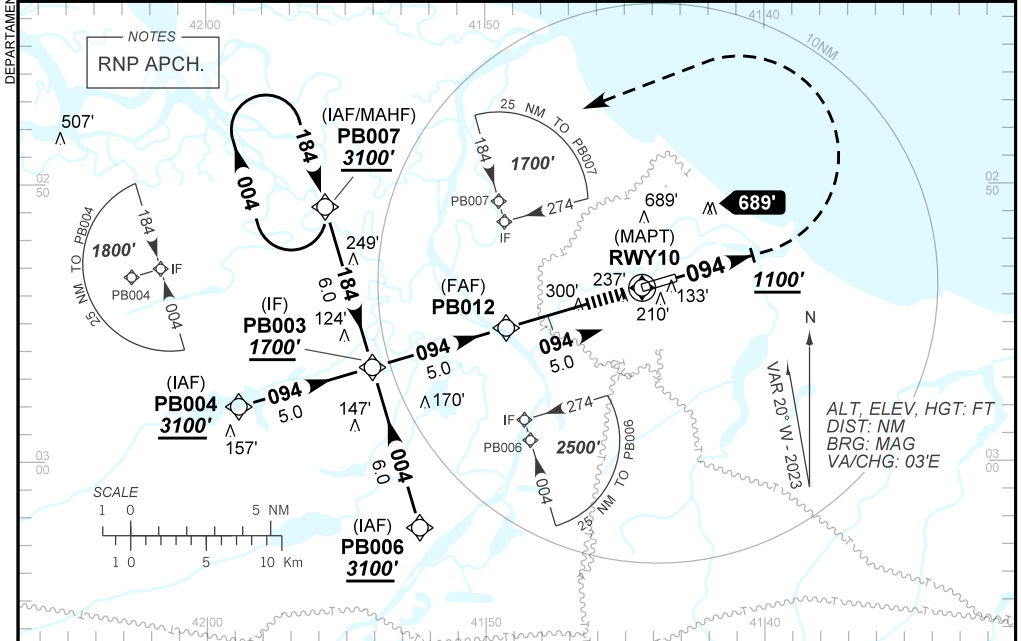
RNP RWY 10

ATIS NIL	APP NIL	TWR NIL	AFIS 126.60	GNDC NIL
TEMP LNAV/VNAV MIN 0°C / MAX 48°C	FINAL CRS 094°	FAF: 1660'	LNAV/VNAV DA / (OCH): 1018' / (1000')	LNAV MDA / (OCH): 1020' / (1010')

APCH Perdida: Subir para **3100'**. Manter proa **094** até **1100'**. Após, curva à ESQUERDA direto PB007 para espera.

Missed APCH: Climb to **3100'**. Maintain heading **094** until **1100'**. After, turn LEFT direct PB007 for holding.

RMK: 1) Prosseguir VMC a partir de 3NM do MAPT ou efetuar aproximação perdida. / Proceed VMC at 3NM to MAPT or perform the Missed Approach. 2) Atentar ao Parque Eólico no setor Norte do Aeródromo. / Warning to the Wind Farm in the northern sector of the Aerodrome.



		PB012	4.0	3.0	RWY 10	Ground Speed (KT)	090	110	130	150	170	190
		1660	1341	1020	ALT	FPM	500	600	700	800	900	1000
		1642	1323	1010	(HGT)	FAF-MAPT	NIL					

STRAIGHT-IN	CAT	A	B	C	D	E
	DA / (OCH)	1018' / (1000')				NA
LNAV/VNAV	ALS/NO ALS/ RVR ALS (m)	NIL / 5000 / NIL				
	LNAV	MDA / (OCH)	1020' / (1010')			
ALS/NO ALS/ RVR ALS (m)		NIL / 5000 / NIL				
CIRCLING	MDA / (OCH)	NA				
	VIS (m)					

CHANGES: IDENT LAYOUT - PROC.