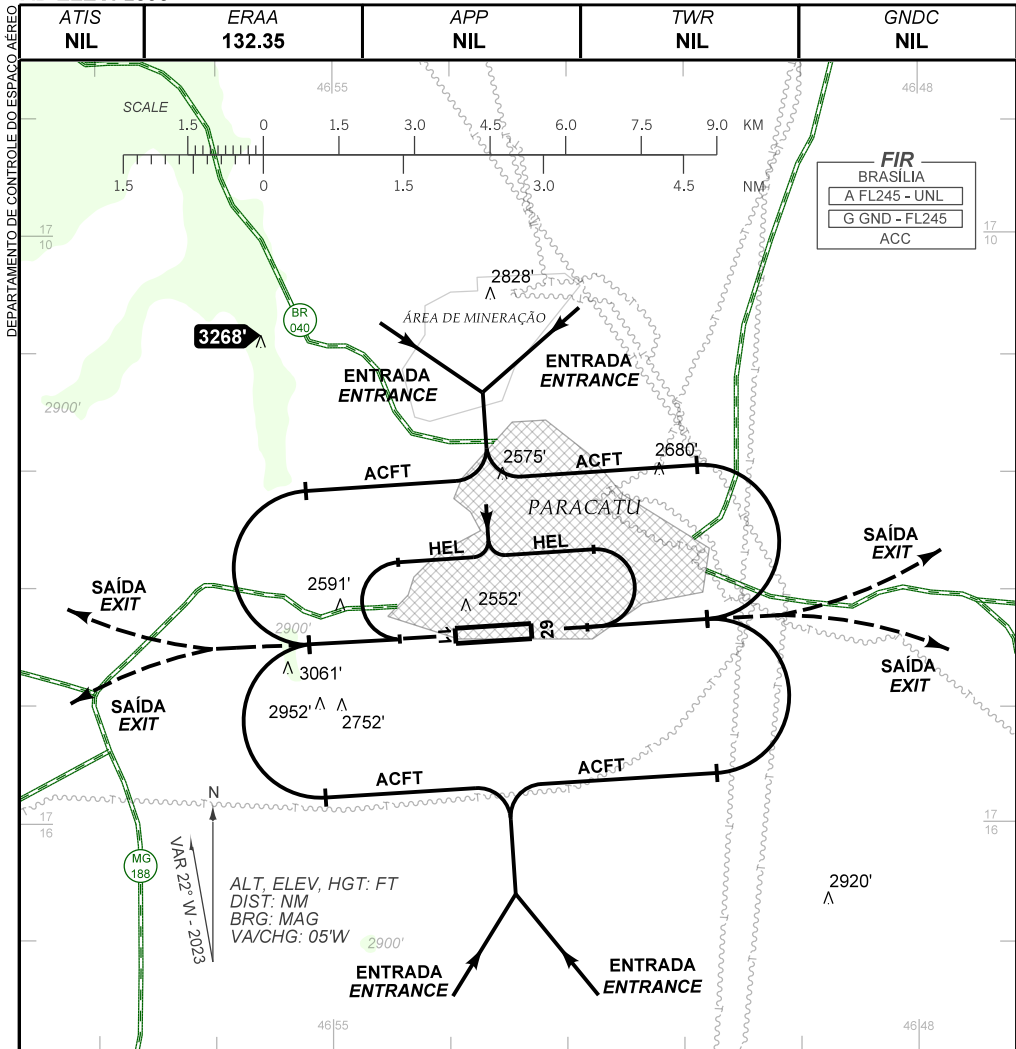


VISUAL APPROACH CHART
(VAC)

PARACATU / Pedro Rabelo de Souza (SNZR)

AD ELEV: 2395'

RWY 11/29



RMK:

- 1- AUTORIZADO SOMENTE / ONLY AUTHORIZED ACFT CAT A, B, C, H.
- 2- ALTITUDES MÍNIMAS NO CIRCUITO DE TRÁFEGO:
MINIMUM ALTITUDES IN THE TRAFFIC CIRCUIT:
 - 2.1- AERONAVES / AIRPLANES:
 - CAT A, B: 3600'
 - CAT C: 3800'
 - 2.2- HELICÓPTEROS / HELICOPTERS: 3000'
- 3- HELICÓPTERO: CIRCUITO DE TRÁFEGO COMPULSÓRIO SETOR N
HELICOPTER: COMPULSORY TRAFFIC SECTOR N.
- 4- OBSERVAR ACFT EM VOO DE INSTRUÇÃO PRÓXIMO AO AD.
OBSERVE ACFT IN INSTRUCTION FLIGHT NEARBY THE AD.

CHANGES: NEW CHART