

STANDARD DEPARTURE CHART  
INSTRUMENT (SID)

SANTARÉM / Maestro Wilson Fonseca, INTL (SBSN)

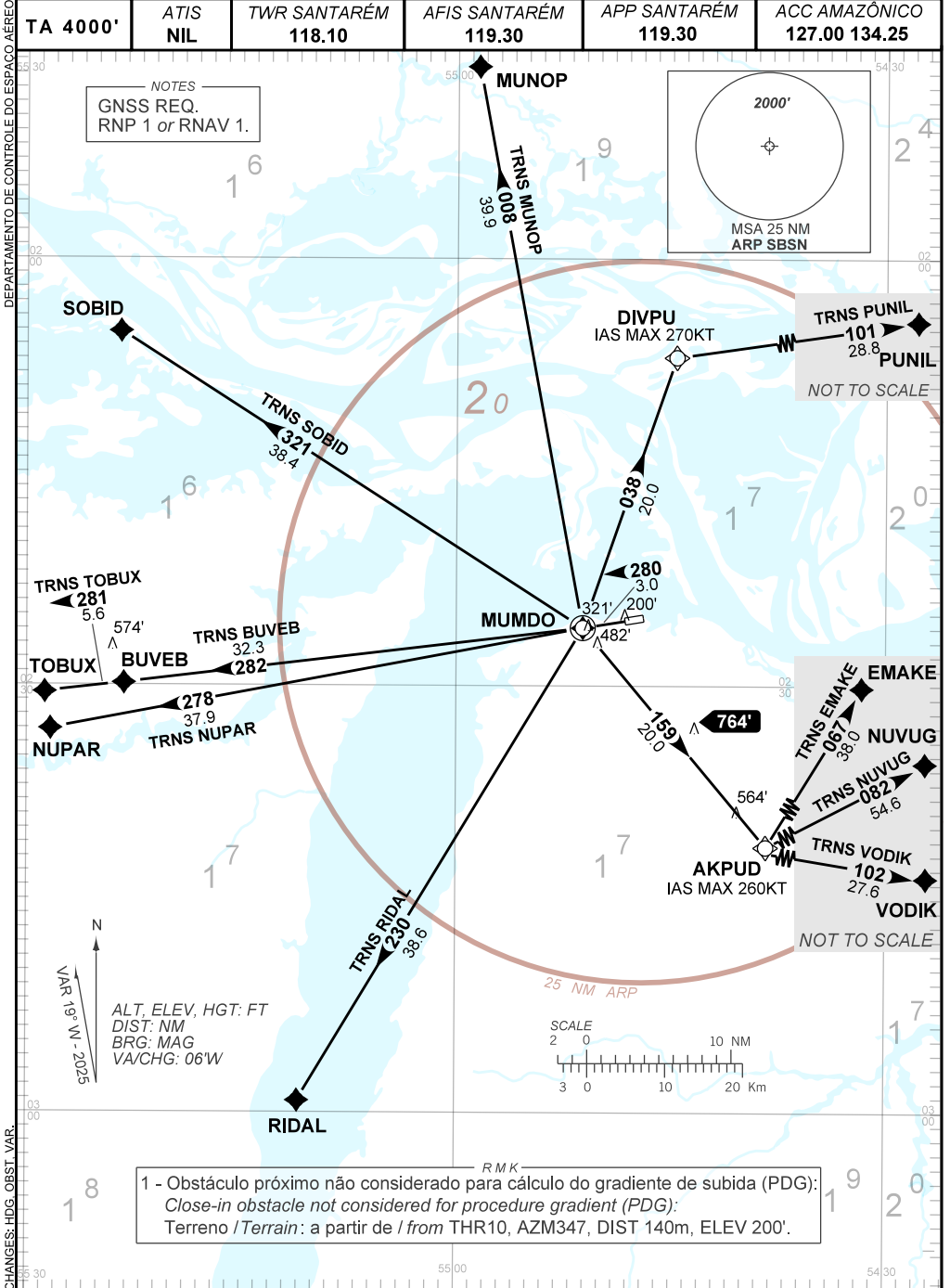
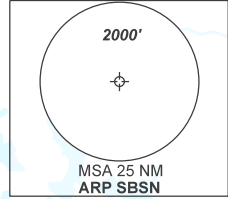
RWY 28

RNAV MUMDO 1A

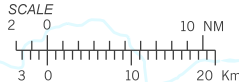
AD ELEV: 197'

|          |          |                     |                      |                     |                             |
|----------|----------|---------------------|----------------------|---------------------|-----------------------------|
| TA 4000' | ATIS NIL | TWR SANTARÉM 118.10 | AFIS SANTARÉM 119.30 | APP SANTARÉM 119.30 | ACC AMAZÔNICO 127.00 134.25 |
|----------|----------|---------------------|----------------------|---------------------|-----------------------------|

NOTES  
GNSS REQ.  
RNP 1 or RNAV 1.



ALT, ELEV, HGT: FT  
DIST: NM  
BRG: MAG  
VA/CHG: 06'W



1 - Obstáculo próximo não considerado para cálculo do gradiente de subida (PDG):  
Close-in obstacle not considered for procedure gradient (PDG):  
Terreno / Terrain: a partir de / from THR10, AZM347, DIST 140m, ELEV 200'.

CHANGES: HDG, OBST, VAR.