

**INSTRUMENT APPROACH  
CHART (IAC)**

**ALTA FLORESTA / Aeroporto Piloto Osvaldo Marques Dias (SBAT)**

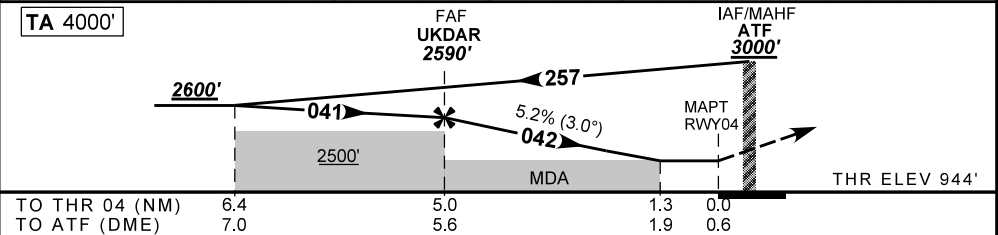
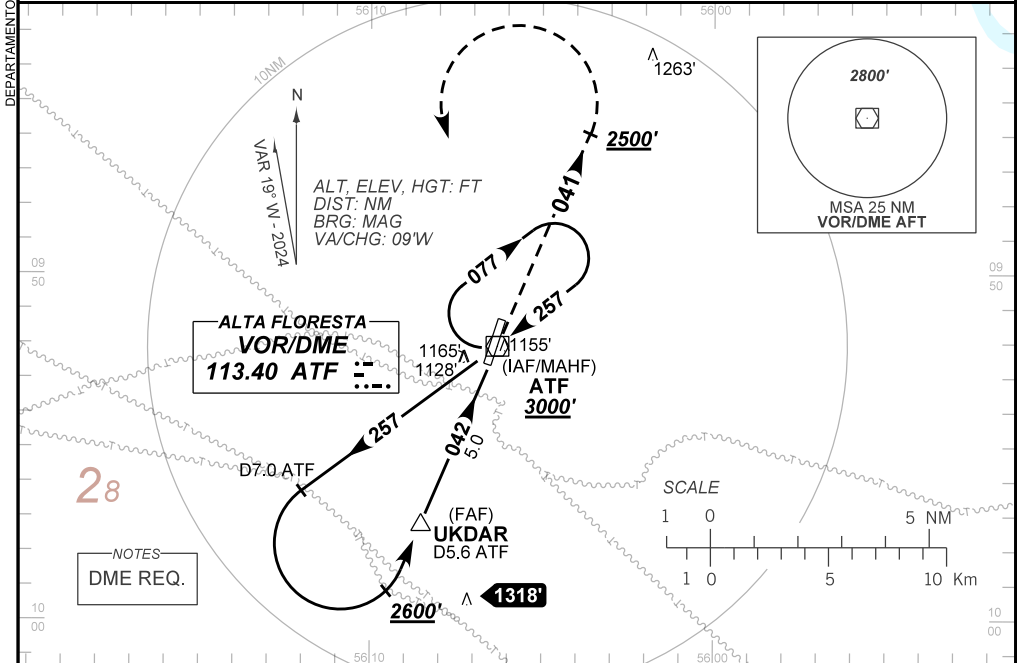
**AD ELEV: 948'**

**VOR X RWY 04**

ATIS NIL	APP NIL	AFIS FLORESTA 126.60	GND NIL
VOR ATF 113.40	FINAL CRS 042°	FAF: 2590'	N/A
		VOR MDA / (OCH): 1410' / (470')	

APCH Perdida: Subir para **3000'**. Manter a RDL **041** do VOR ATF até **2500'**. Após, curvar à ESQUERDA direto VOR ATF para espera.

Missed APCH: Climb to **3000'**. Maintain RDL **041** VOR ATF until **2500'**. After, turn LEFT direct VOR ATF for holding.



TO THR 04 (NM)	6.4	5.0	1.3	0.0
TO ATF (DME)	7.0	5.6	1.9	0.6

	UKDAR	4.0	3.0	2.0	1.3	RWY04	Ground Speed (KT)	090	110	130	150	170	190
	2590	2268	1949	1631	1410	ALT	FPM	500	600	700	800	900	NA
	1646	1324	1005	687	470	(HGT)	FAF-MAPT	NA					

STRAIGHT-IN	CAT	A	B	C	D	E
VOR	MDA / (OCH)	1410' / (470')				NA
	ALS/NO ALS/ RVR ALS (m)	NIL / 1600 / NIL				
CIRCLING	MDA / (OCH)	NA				
	VIS (m)					

CHANGES: HDG. LAYOUT. OBST. VAR.