

**INSTRUMENT APPROACH  
CHART (IAC)**

**SALVADOR / Deputado Luís Eduardo Magalhães, INTL (SBSV)**

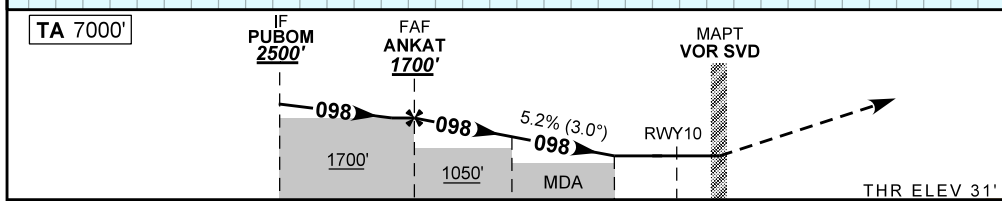
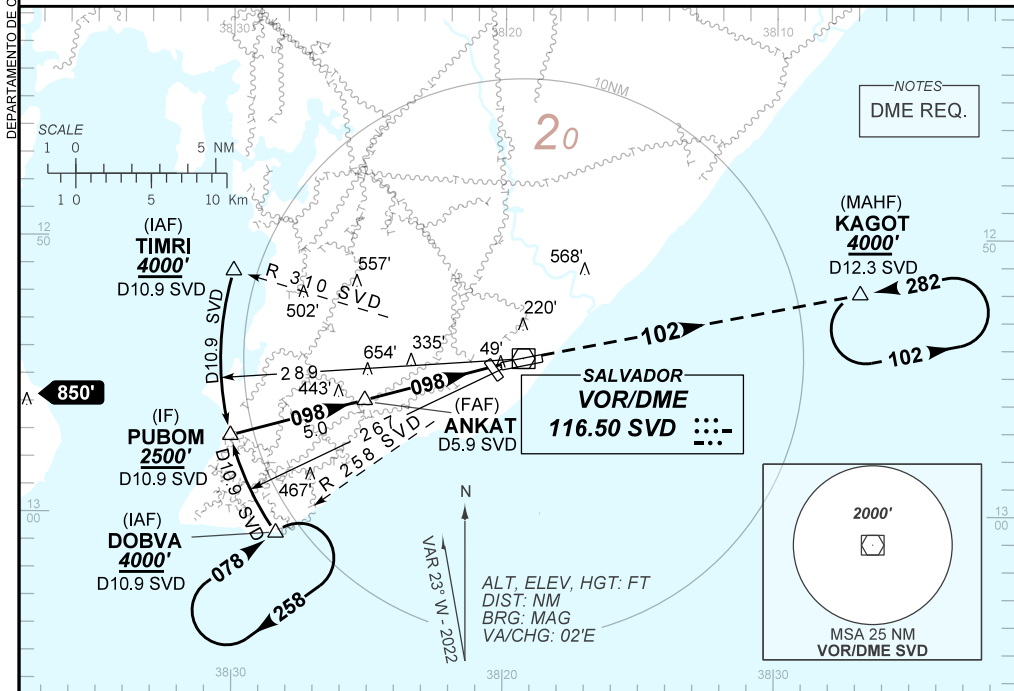
**AD ELEV: 66'**

**VOR Z RWY 10**

D-ATIS <b>127.775</b>	APP SALVADOR <b>119.35 119.80 120.80 129.45</b>	TWR SALVADOR <b>118.60 118.95 121.10</b>	GNDC SALVADOR <b>121.90</b>
VOR/DME SVD <b>116.50 MHz</b>	FINAL CRS <b>098°</b>	FAF: <b>1700'</b>	N/A
		VOR MDA / (OCH): <b>520' / (490')</b>	

APCH Perdida: Subir para **4000'**. Manter RDL **102** VOR SVD até KAGOT para espera.

Missed APCH: Climb to **4000'**. Maintain **102** RDL SVD VOR until KAGOT for holding.



TO THR 10 (NM)	10.1	5.1	3.1	1.4	0.0
TO SVD (DME)	10.9	5.9	3.9	2.2	0.8

	ANKAT 4.0	3.1	2.0	1.4	RWY 10	Ground Speed (KT)	090	110	130	150	170	190
	1700	1355	1057	718	520	FPM	500	600	700	800	900	1000
	1669	1324	1026	687	490	FAF-MAPT	NA					

STRAIGHT-IN	CAT	A	B	C	D	E
	MDA / (OCH)	520' / (490')				
VOR	ALS/NO ALS/ RVR ALS (m)	NIL / 1600 / NIL		NIL / 2300 / NIL		
CIRCLING	MDA / (OCH)	NA				
	VIS (m)					

CHANGES: FREQ.

DEPARTAMENTO DE CONTROLE DO ESPAÇO AEREO