

STANDARD DEPARTURE CHART  
INSTRUMENT (SID)

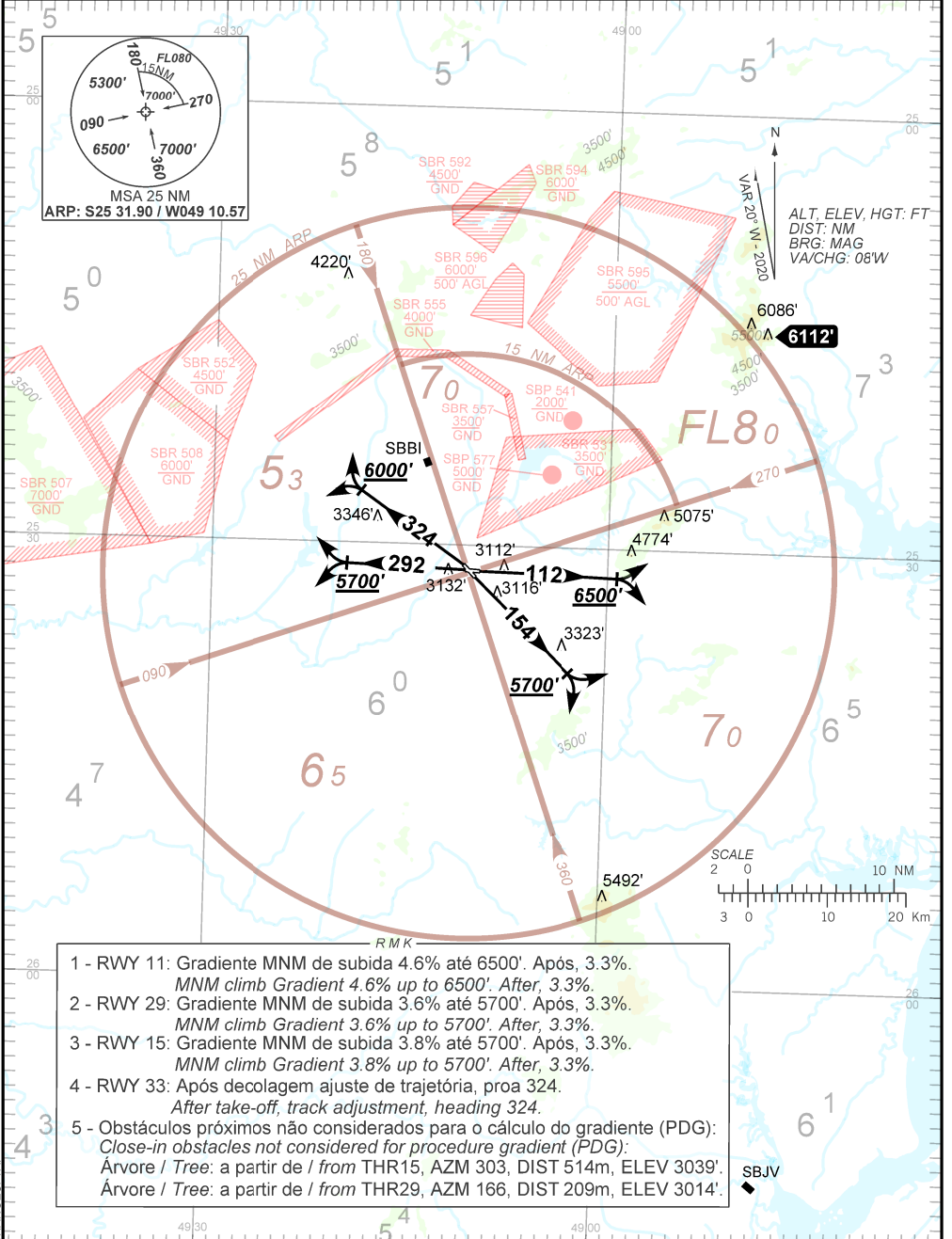
CURITIBA / Afonso Pena, INTL (SBCT)

RWY 11/29/15/33

OMNI

AD ELEV: 2989'

TA 9000'	TWR CURITIBA 118.15 121.50	APP CURITIBA 119.70 119.95 120.65 120.95 129.55 133.15 121.50	ACC CURITIBA 125.40 124.40 132.80 126.50 126.95 128.25 126.10 127.50 125.80 127.20 121.50
----------	-------------------------------	---	---



- 1 - RWY 11: Gradiente MNM de subida 4.6% até 6500'. Após, 3.3%.  
MNM climb Gradient 4.6% up to 6500'. After, 3.3%.
- 2 - RWY 29: Gradiente MNM de subida 3.6% até 5700'. Após, 3.3%.  
MNM climb Gradient 3.6% up to 5700'. After, 3.3%.
- 3 - RWY 15: Gradiente MNM de subida 3.8% até 5700'. Após, 3.3%.  
MNM climb Gradient 3.8% up to 5700'. After, 3.3%.
- 4 - RWY 33: Após decolagem ajuste de trajetória, proa 324.  
After take-off, track adjustment, heading 324.
- 5 - Obstáculos próximos não considerados para o cálculo do gradiente (PDG):  
Close-in obstacles not considered for procedure gradient (PDG):  
Árvore / Tree: a partir de / from THR29, AZM 303, DIST 514m, ELEV 3039'.  
Árvore / Tree: a partir de / from THR29, AZM 166, DIST 209m, ELEV 3014'.

CHANGES TA