

**INSTRUMENT APPROACH PATO BRANCO / Regional de Pato Branco - Professor Juvenal Loureiro Cardoso (SBPO)
CHART (IAC)**

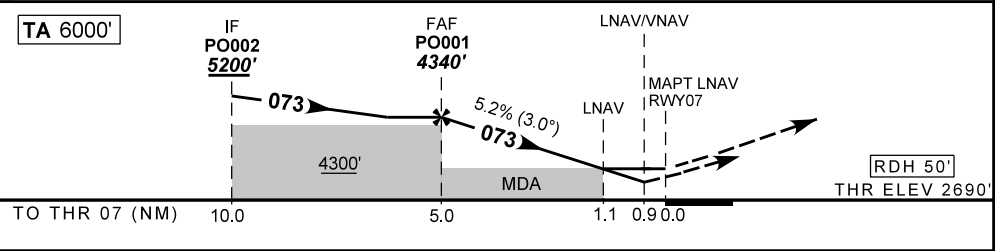
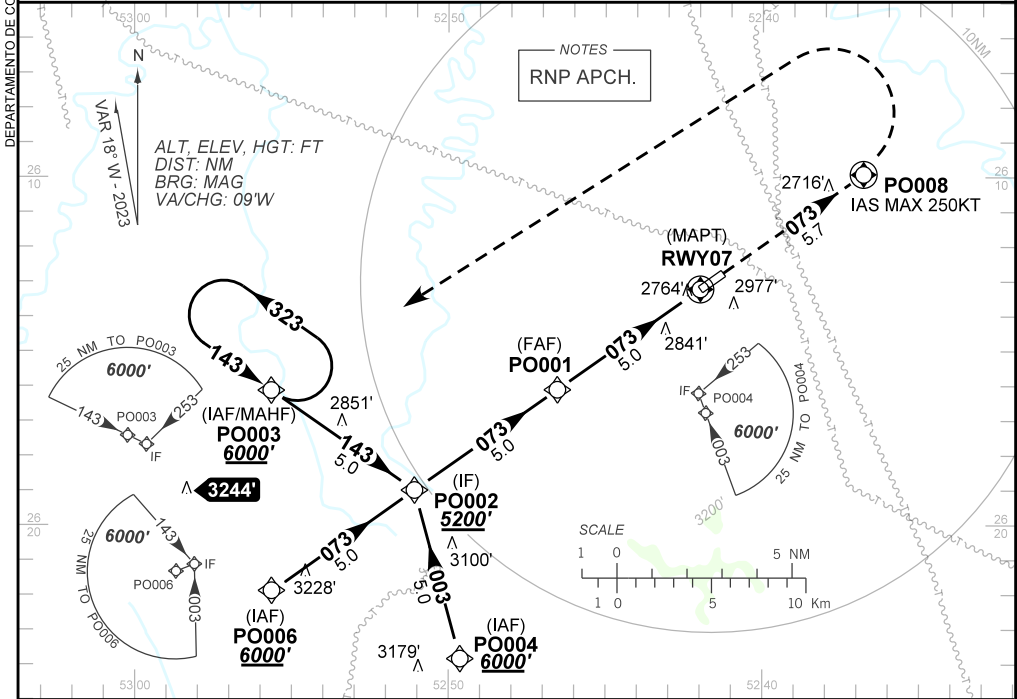
AD ELEV: 2700'

RNP RWY 07

ATIS NIL	APP NIL	AFIS PATO BRANCO 130.80	GNDC NIL
TEMP LNAV/VNAV MIN -10°C / MAX 50°C	FINAL CRS 073°	FAF: 4340'	LNAV/VNAV DA / (OCH): 3019' / (330')
		LNAV MDA / (OCH): 3100' / (410')	

APCH Perdida: Subir para **6000'**. Manter rumo **073** até PO008. Após, curvar à ESQUERDA direto PO003 para espera.

Missed APCH: Climb to **6000'**. Maintain course **073** until PO008. After, turn LEFT direct PO003 for holding.



PO001	4.0	3.0	2.0	1.1	RWY07	Ground Speed (KT)	090	110	130	150	170	190
4340	4014	3695	3377	3100	ALT	FPM	500	600	700	800	900	NA
1650	1324	1005	687	410	(HGT)	FAF-MAPT	NIL					

STRAIGHT-IN	CAT	A	B	C	D	E
	DA / (OCH)	3019' / (330')				
LNAV/VNAV	ALS/NO ALS/ RVR ALS (m)	NIL / 1500 / NIL				
	MDA / (OCH)	3100' / (410')				
LNAV	ALS/NO ALS/ RVR ALS (m)	NIL / 1600 / NIL		NIL / 1900 / NIL		
	MDA / (OCH)	NA				
CIRCLING	MDA / (OCH)	NA				
	VIS (m)	NA				

CHANGES: IDENT, PROC, VAR.