

**INSTRUMENT APPROACH
CHART (IAC)**

CANOAS / Campo Nossa Senhora de Fátima, MIL (SBCO)

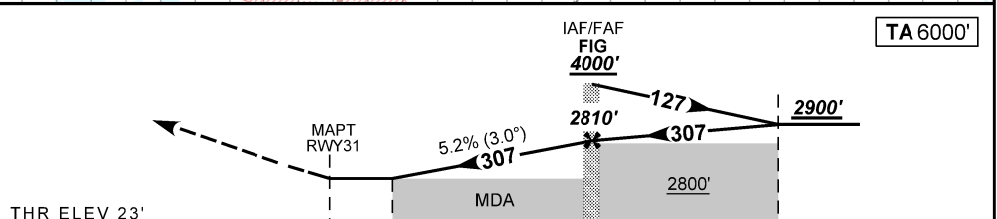
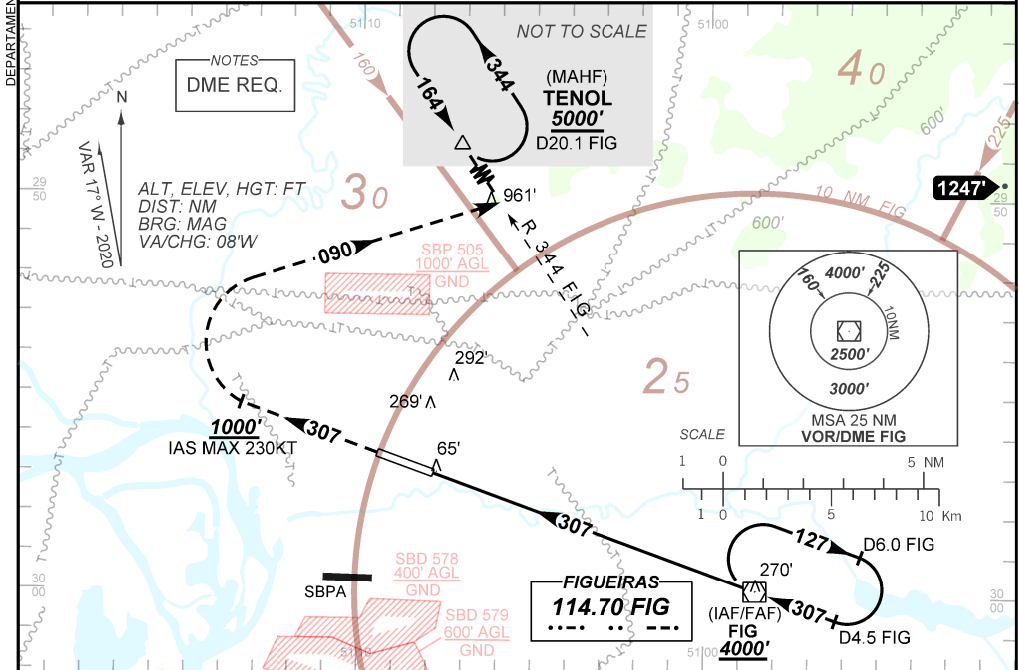
VOR X RWY 31

AD ELEV: 26'

| | | | | | |
|------------------------------|---|---------------------|------------|--|--|
| ATIS NIL | APP PALEGRE 119.00 120.10 120.55 128.90 | | | TWR CANOAS 118.50 122.80 (MIL) | GNDC CANOAS 121.70 |
| VOR FIG 114.70 MHz | FINAL CRS 307° | FAF 2810' | N/A | | VOR MDA / (OCH): 520' / (500') |

APCH Perdida: Subir para **5000'**. Manter rumo **307** até **1000'**. Após, curvar à DIREITA proa **090** para interceptar a RDL **344** do VOR FIG até TENOL para espera.
Missed APCH: Climb to **5000'**. Maintain course **307** until **1000'**. After, turn RIGHT heading **090** to intercept **344** RDL FIG VOR until TENOL for holding.

RMK: Não autorizado esperas simultâneas sobre Canoas e Porto Alegre no mesmo nível.
Unauthorized simultaneous holding over Canoas and Porto Alegre on the same flight level.



| | | | | |
|----------------|-----|-----|-----|------|
| TO THR 31 (NM) | 0.0 | 1.4 | 8.6 | 13.1 |
| TO FIG (DME) | 8.6 | 7.2 | 0.0 | 4.5 |

| | | | | | | | | | | | | | | | | |
|-------|-----|-----|------|------|------|------|------|------|------|-------------------|-----|-----|-----|-----|-----|------|
| RWY31 | 1.4 | 2.0 | 3.0 | 4.0 | 5.0 | 6.0 | 7.0 | 8.0 | FIG | Ground Speed (KT) | 090 | 110 | 130 | 150 | 170 | 190 |
| ALT | 520 | 710 | 1028 | 1347 | 1665 | 1984 | 2302 | 2620 | 2810 | FPM | 500 | 600 | 700 | 800 | 900 | 1000 |
| (HGT) | 500 | 687 | 1005 | 1324 | 1642 | 1961 | 2279 | 2597 | 2787 | FAF-MAPT | NA | | | | | |

| | | | | | | |
|-------------|-------------------------|------------------|---|---|------------------|---|
| STRAIGHT-IN | CAT | A | B | C | D | E |
| VOR | MDA / (OCH) | 520' / (500') | | | | |
| | ALS/NO ALS/ RVR ALS (m) | NIL / 1600 / NIL | | | NIL / 2300 / NIL | |
| CIRCLING | MDA / (OCH) | NA | | | | |
| | VIS (m) | NA | | | | |

CHANGES: ALT.