

**INSTRUMENT APPROACH  
CHART (IAC)**

**CABO FRIO / Cabo Frio, INTL (SBCB)**

**AD ELEV: 23'**

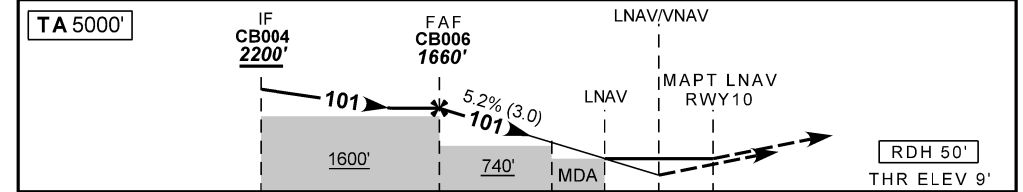
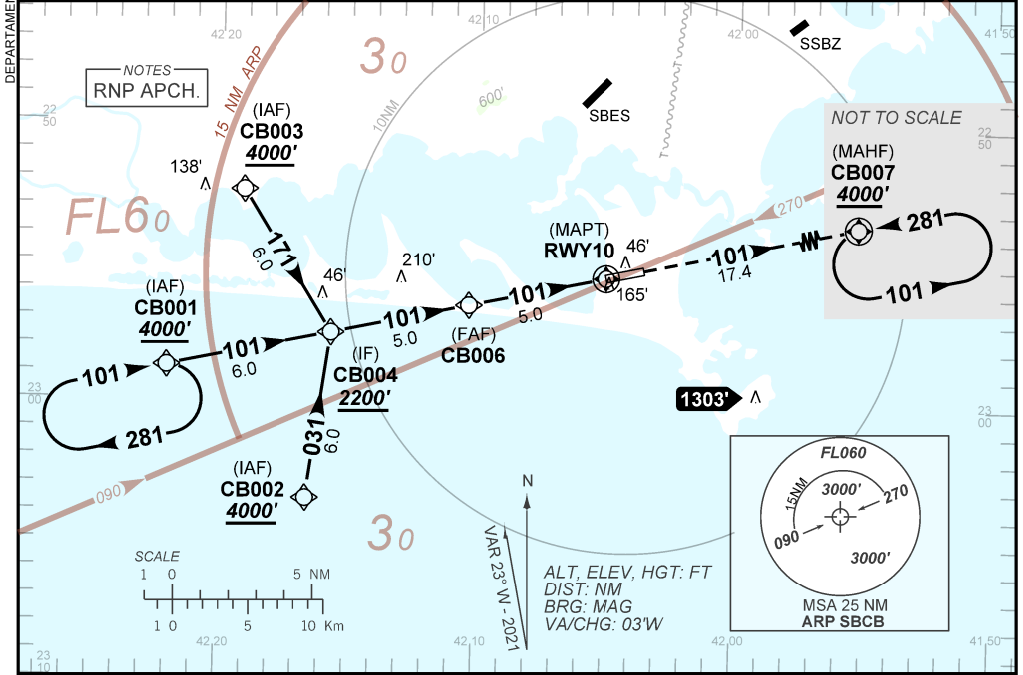
**RNP Z RWY 10**

D-ATIS NIL	APP ALDEIA 119.45 120.30	AFIS CABO FRIO 132.15	GNDC NIL
---------------	-----------------------------	--------------------------	-------------

TEMP LNAV/VNAV <b>MIN 0° MAX 46°</b>	FINAL CRS <b>101°</b>	FAF: <b>1660'</b>	LNAV/VNAV DA / (OCH): <b>326' / (317')</b>	LNAV MDA / (OCH): <b>420' / (420')</b>
---	--------------------------	----------------------	---	---

APCH Perdida: Subir para **4000'**, gradiente MNM 4%. Manter rumo **101** até CB007 para espera.  
Missed APCH: Climb to **4000'**, MNM gradient 4%. Maintain course **101** until CB007 for holding.

RMK: 1) Gradiente de 2.5% livra obstáculos, entretanto necessário gradiente de 4% para chegar a 4000 pés no MAHF. Para APCH Perdida com gradiente abaixo de 4%, autorização do APP Aldeia requerida.  
1) 2.5% gradient possible by obstacle clearance, but 4% reaches 4000 feet holding altitude at MAHF.  
Missed approach gradient below 4% only authorized by APP Aldeia.



TO THR 10 (NM)	10.0	5.0	2.5	1.1	0.8	0.0													
CB006	4.0	3.0	2.5	2.0	1.1	RWY10													
1660	1333	1014	856	696	420	ALT													
1651	1324	1005	847	687	420	(HGT)													

STRAIGHT-IN	CAT	A	B	C	D	E
	DA / (OCH)		326' / (317')			
LNAV/VNAV	ALS/NO ALS/ RVR ALS (m)		NIL / 1400 / NIL			NA
	MDA / (OCH)		420' / (420')			
LNAV	ALS/NO ALS/ RVR ALS (m)	NIL / 1600 / NIL		NIL / 1900 / NIL		
	MDA / (OCH)					
CIRCLING	MDA / (OCH)					
	VIS (m)					NA