

INSTRUMENT APPROACH
CHART (IAC)

CANOAS / Campo Nossa Senhora de Fátima, MIL (SBCO)

AD ELEV: 26'

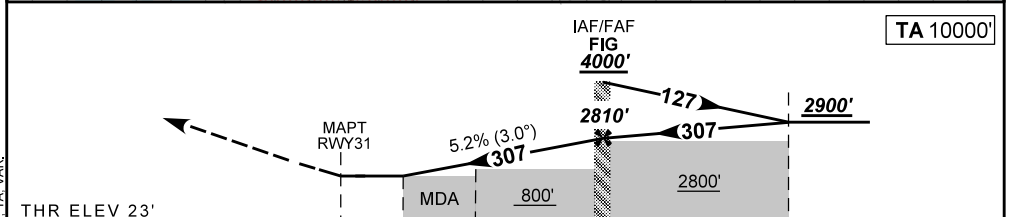
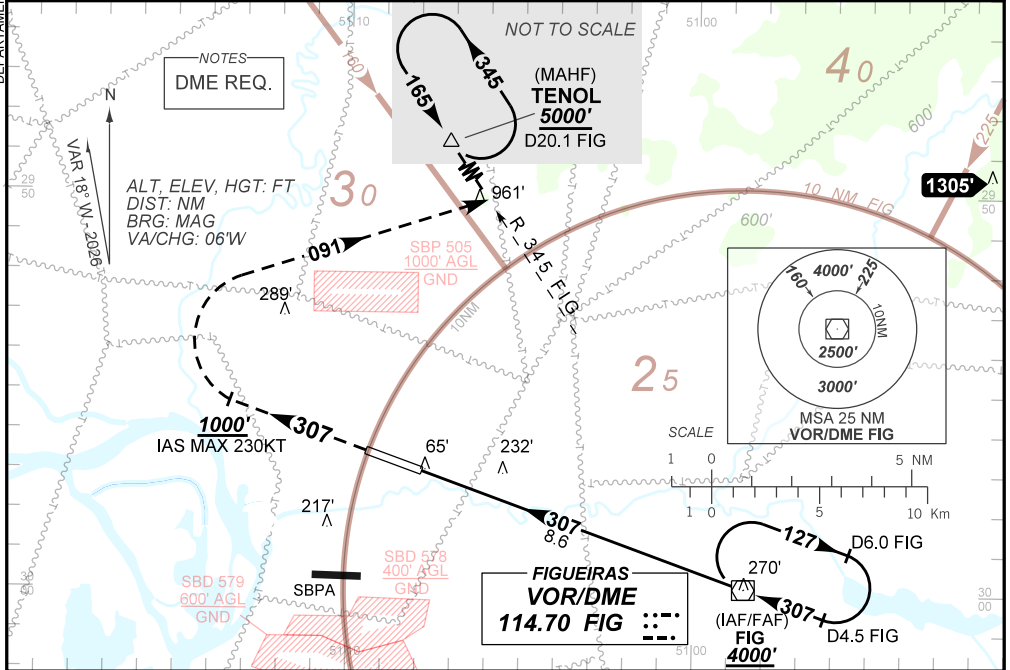
VOR X RWY 31

DEPARTAMENTO DE CONTROLE DO ESPAÇO AÉREO

ATIS NIL	APP PALEGRE 119.00 120.10 120.55 128.90			TWR CANOAS 118.50 122.80 (MIL)	GNDC CANOAS 121.70
VOR FIG 114.70 MHz	FINAL CRS 307°	FAF: 2810'	N/A		VOR MDA / (OCH): 530' / (510')

APCH Perdida: Subir para **5000'**. Manter rumo **307** até **1000'**. Após, curvar à DIREITA proa **091** para interceptar a RDL **345** do VOR FIG até TENOL para espera.
Missed APCH: Climb to **5000'**. Maintain course **307** until **1000'**. After, turn RIGHT heading **091** to intercept **345** RDL FIG VOR until **TENOL** for holding.

RMK: Não autorizado esperas simultâneas sobre Canoas e Porto Alegre no mesmo nível.
Unauthorized simultaneous holding over Canoas and Porto Alegre on the same flight level.



THR ELEV 23'											TA 10000'
TO THR 31 (NM)	0.0	1.4	2.3	8.6	13.1						
TO FIG (DME)	8.6	7.2	6.3	0.0	4.5						

RWY31	1.4	2.3	3.0	4.0	5.0	6.0	7.0	8.0	FIG	Ground Speed (KT)	090	110	130	150	170	190
ALT	530	806	1028	1347	1665	1984	2302	2620	2810	FPM	500	600	700	800	900	1000
(HGT)	510	783	1005	1324	1642	1961	2279	2597	2787	FAF-MAPT	NA					

VOR	STRAIGHT-IN	CAT	A	B	C	D	E
	MDA / (OCH)	530' / (510')					
CIRCLING	ALS/NO ALS/ RVR ALS (m)	NIL / 1600 / NIL					NIL / 2400 / NIL
	MDA / (OCH)	NA					
VIS (m)							

CHANGES: MDA, MINM OPR, PROC, OBST, TA, VAR.