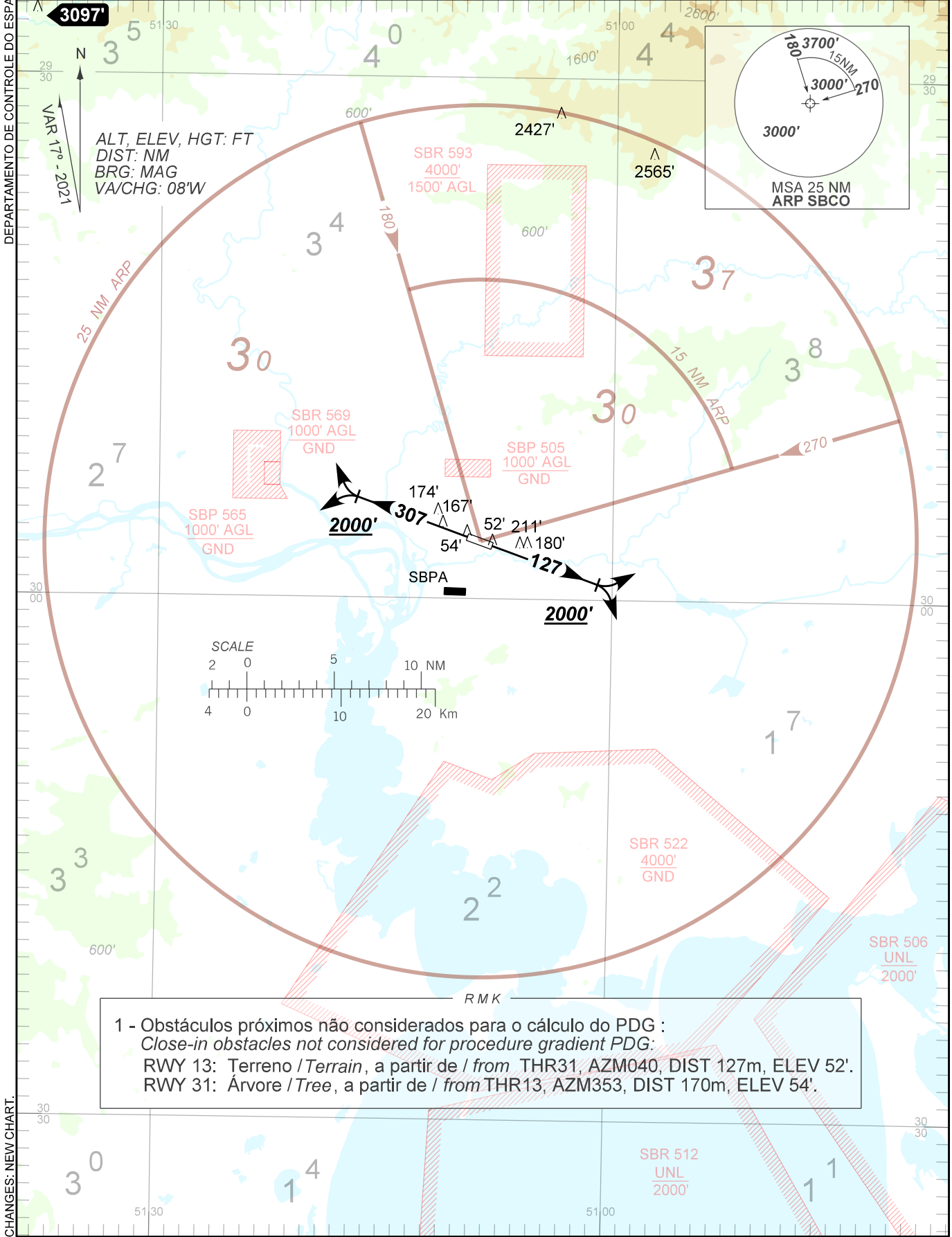


AD ELEV: 26'

TA 6000'	TWR CANOAS 118.50 122.80 (MIL)	APP PALEGRE 119.00 120.10 120.55 128.90	ACC CURITIBA 127.40 126.75 135.85 128.45
----------	-----------------------------------	--	---



1 - Obstáculos próximos não considerados para o cálculo do PDG :  
 Close-in obstacles not considered for procedure gradient PDG:  
 RWY 13: Terreno / Terrain, a partir de / from THR31, AZM040, DIST 127m, ELEV 52'.  
 RWY 31: Árvore / Tree, a partir de / from THR13, AZM353, DIST 170m, ELEV 54'.

CHANGES: NEW CHART.