

**INSTRUMENT APPROACH
CHART (IAC)**

NATAL / Campo Augusto Severo, MIL (SBNT)

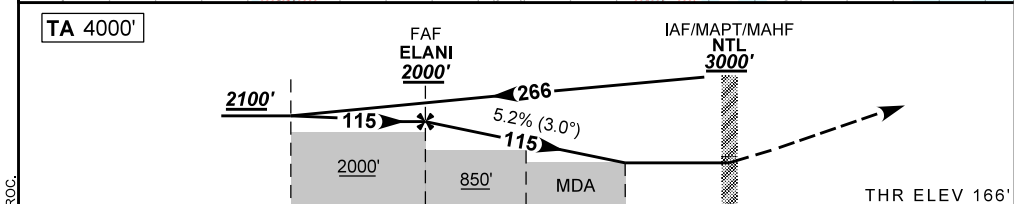
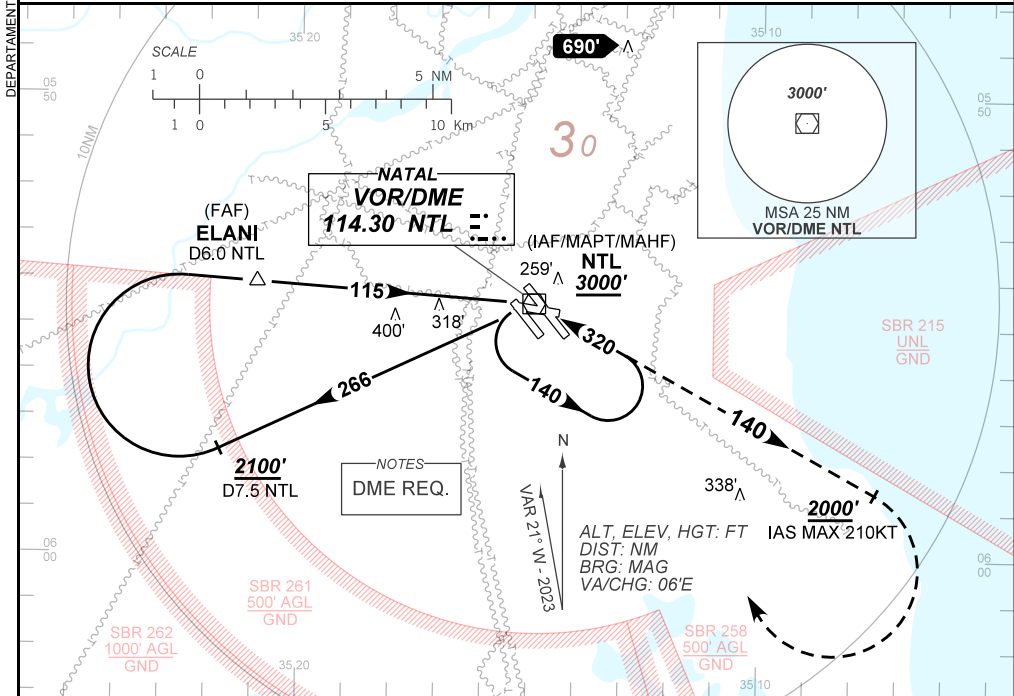
AD ELEV: 169'

VOR Z RWY 12

D-ATIS 132.65	APP NATAL 119.30 119.65 120.65 129.80			TWR NATAL 118.70 122.80	GNDC NATAL 121.90
VOR NTL 114.30 MHz	FINAL CRS 115°	FAF: 2000'	N/A	VOR MDA / (OCH): 660' / (500')	

APCH Perdida: 1) Subir para **3000'**. Manter a RDL **140** do VOR NTL até **2000'**. Após, curvar à DIREITA direto VOR NTL para espera. 2) IAS MAX 210KT até **2000'**.
Missed APCH: 1) Climb to **3000'**. Maintain **140** RDL NTL VOR until **2000'**. After, turn RIGHT direct NTL VOR for holding. 2) IAS MAX 210KT until **2000'**.

RMK: Para circular / Circling: IAS MAX 170KT.



TO THR 12(NM)	7.1	5.6	2.0	1.4	0.0	THR ELEV 166'
TO NTL (DME)	7.5	6.0	2.4	1.8	0.4	

ELANI	4.0	3.0	2.0	1.4	RWY12	Ground Speed (KT)	090	110	130	150	170	190
2000	1490	1171	853	660	ALT	FPM	500	600	700	800	900	1000
1834	1324	1005	687	500	(HGT)	FAF-MAPT	NA					

STRAIGHT-IN	CAT	A	B	C	D	E	
	MDA / (OCH)	660' / (500')					
VOR	ALS/NO ALS/ RVR ALS (m)	NIL / 1600 / NIL			NIL / 2300 / NIL		
	MDA / (OCH)	800' / (630')		890' / (720')		1000' / (830')	
CIRCLING	VIS (m)	1600			3200	3600	4800

DEPARTAMENTO DE CONTROLE DO ESPAÇO AEREO
CHANGES: AD ELEV. MINM OPR. OBST. PROC.