

**INSTRUMENT APPROACH
CHART (IAC)**

SÃO LUÍS / Marechal Cunha Machado, INTL (SBSL)

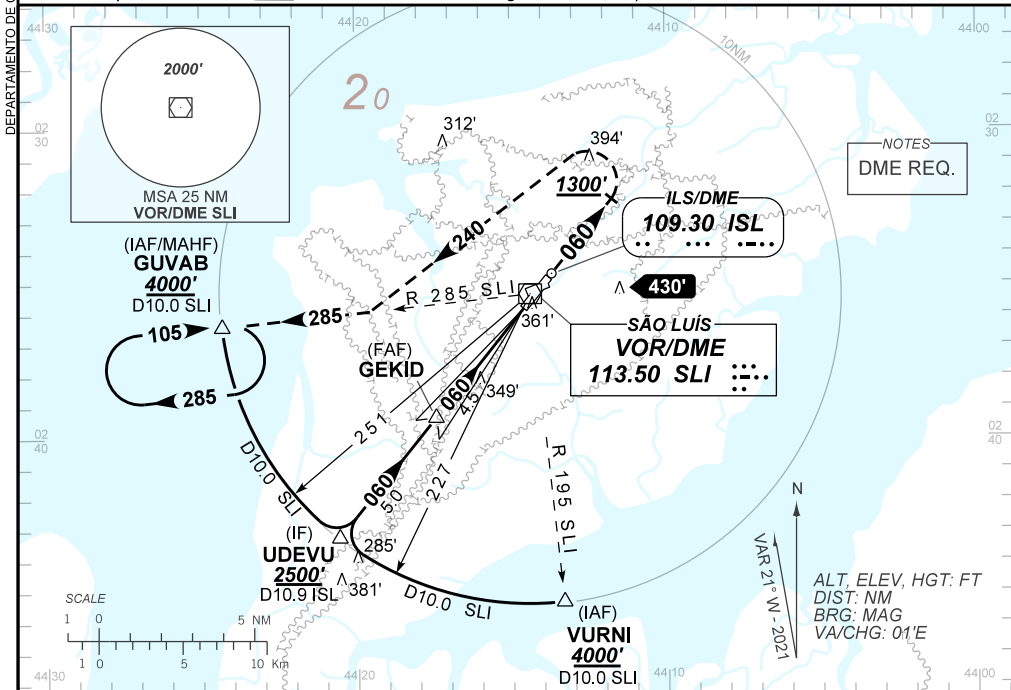
AD ELEV: 177'

ILS W or LOC W RWY 06

D-ATIS NIL	APP SÃO LUÍS 119.45	TWR SÃO LUÍS 118.90	GNDC NIL
ILS/DME ISL 109.30 MHz	FINAL CRS 060°	FAF: 1660'	CAT I DA / (OCH): REFER TO MNM
LOC		MDA / (OCH): 600' / (430')	

APCH Perdida: 1) Subir para **4000'**. Manter RDL **060** VOR SLI até **1300'**. Após, curvar à ESQUERDA proa **240** para interceptar e manter a RDL **285** VOR SLI para espera em GUVAB. 2) IAS MAX 220KT.

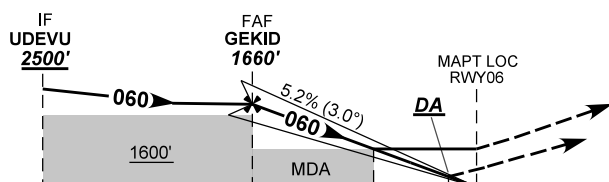
Missed APCH: 1) Climb to **4000'**. Maintain **060** RDL SLI VOR until **1300'**. After, turn LEFT heading **240** to intercept and maintain **285** RDL SLI VOR for holding at GUVAB. 2) IAS MAX 220KT.



NOTES
DME REQ.

SÃO LUÍS
VOR/DME
113.50 SLI

TA 4000'



ILS RDH 46'
THR ELEV 177'

TO THR 06 (NM)	10.0	4.5	1.2	0.5	0.0
TO ISL (DME)	10.9	5.9	2.6	1.9	1.4

GEKID	4.0	3.0	2.0	1.2	RWY06	Ground Speed (KT)	090	110	130	150	170	190
1660	1497	1179	860	600	ALT	FPM	500	600	700	800	900	1000
1490	1320	1002	683	430	(HGT)	FAF-MAPT	NA					

STRAIGHT-IN	CAT	A	B	C	D	E
CAT I	DA / (OCH)	377' / (200')				540' / (363')
	ALS/NO ALS/ RVR ALS (m)	NIL / 1200 / NIL				NIL / 1700 / NIL
LOC	MDA / (OCH)	600' / (430')				
	ALS/NO ALS/ RVR ALS (m)	NIL / 1600 / NIL		NIL / 2000 / NIL		
CIRCLING	MDA / (OCH)	NA				
	VIS (m)					