

**INSTRUMENT APPROACH  
CHART (IAC)**

**PIRASSUNUNGA / Campo Fontenelle, MIL (SBYS)**

**VOR E RWY 02C**

(CAT A,B)

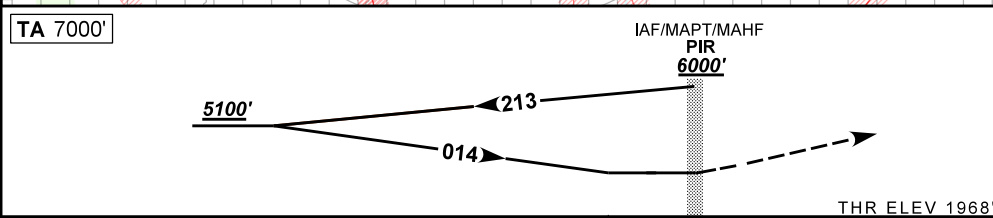
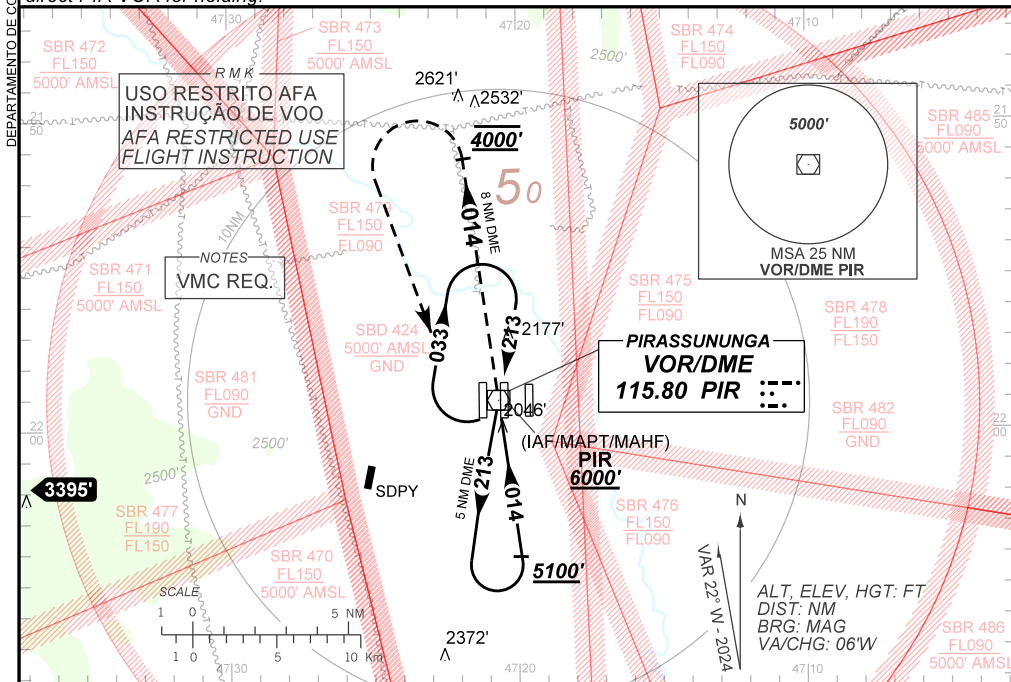
**AD ELEV: 1976'**

**USO EXCLUSIVO ACFT MILITARES  
MILITARY ACFT ONLY**

ATIS <b>127.70</b>	APP ACADEMIA <b>120.10 122.40 122.80 124.90 135.45</b>			TWR ACADEMIA <b>118.30</b>	GND C ACADEMIA <b>121.90</b>
VOR PIR <b>115.80 MHz</b>	FINAL CRS <b>014°</b>	<b>N/A</b>	<b>N/A</b>	VOR MDA / (OCH): <b>4000' / (2040')</b>	

APCH Perdida: Manter **4000'** na RDL **014** VOR PIR até 8 NM do DME PIR. Após, subir para **6000'** e curvar à ESQUERDA direto VOR PIR para espera.

Missed APCH: Maintain **4000'** on **014** RDL PIR VOR until 8 NM PIR DME. After, climb to **6000'** turn LEFT direct PIR VOR for holding.



NIL	RW02C	Ground Speed (KT)	090	110	130	150	170	190
NIL	ALT	FPM	650			NA		
NIL	(HGT)	FAF-MAPT	NA					

STRAIGHT-IN	CAT	A	B	C	D	E
VOR	MDA / (OCH)	4000' / (2040')		NA		
	ALS/NO ALS/ RVR ALS (m)	NIL / 5000' / NIL				
CIRCLING	MDA / (OCH)	NA				
	VIS (m)					

CHANGES: EAC.

AIRAC AMDT 2412A1 28 NOV 24

**USO EXCLUSIVO ACFT MILITARES / MILITARY ACFT ONLY**

**SBYS\_IAC\_01R 1/1  
IAC VOR E RWY 02C**