

**INSTRUMENT APPROACH
CHART (IAC)**

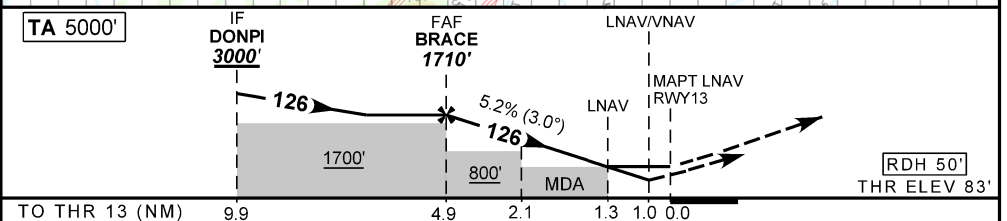
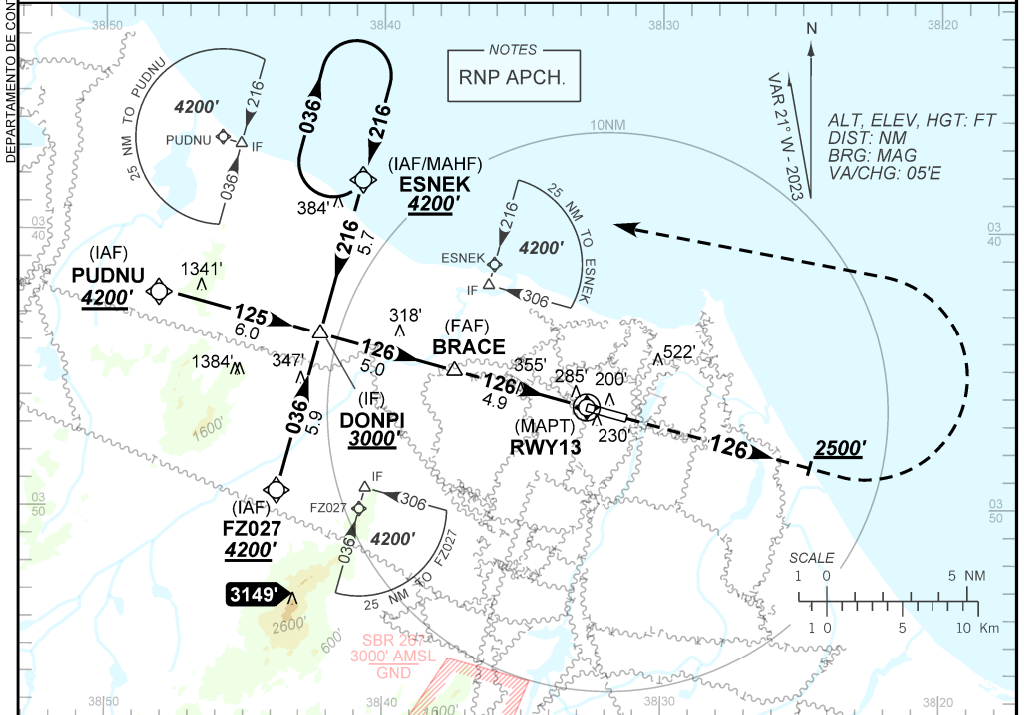
FORTALEZA / Pinto Martins, INTL (SBFZ)

AD ELEV: 83'

RNP Y RWY 13

D-ATIS 127.70	APP FORTALEZA 120.50 133.00 134.55		TWR FORTALEZA 129.00	GNDC FORTALEZA 121.95
TEMP LNAV/VNAV MIN 10°C / MAX 50°C	FINAL CRS 126°	FAF: 1710'	LNAV/VNAV DA / (OCH): 446' / (363')	LNAV MDA / (OCH): 540' / (460')

APCH Perdida: Subir para **4200'**. Manter rumo **126** até **2500'**. Após, curvar à ESQUERDA direto ESNEK para espera.
Missed APCH: Climb to **4200'**. Maintain course **126** until **2500'**. After, turn LEFT direct ESNEK for holding.



	BRACE	4.0	3.0	2.1	1.3	RWY13	Ground Speed (KT)	090	110	130	150	170	190
		1710	1407	1088	809	540	FPM	500	600	700	800	900	1000
		1627	1324	1005	726	460	FAF-MAPT	NIL					

STRAIGHT-IN	CAT	A	B	C	D	E
	DA / (OCH)	446' / (363')				NA
LNAV/VNAV	ALS/NO ALS/ RVR ALS (m)	NIL / 1700 / NIL				NA
	MDA / (OCH)	540' / (460')				
LNAV	ALS/NO ALS/ RVR ALS (m)	NIL / 1700 / NIL		NIL / 2100 / NIL		
	MDA / (OCH)	NA				
CIRCLING	MDA / (OCH)	NA				
	VIS (m)	NA				

CHANGES LAYOUT