

**INSTRUMENT APPROACH
CHART (IAC)**

NAVEGANTES / Ministro Victor Konder, INTL (SBNF)

RNP X RWY 26 (AR)

AD ELEV: 18'

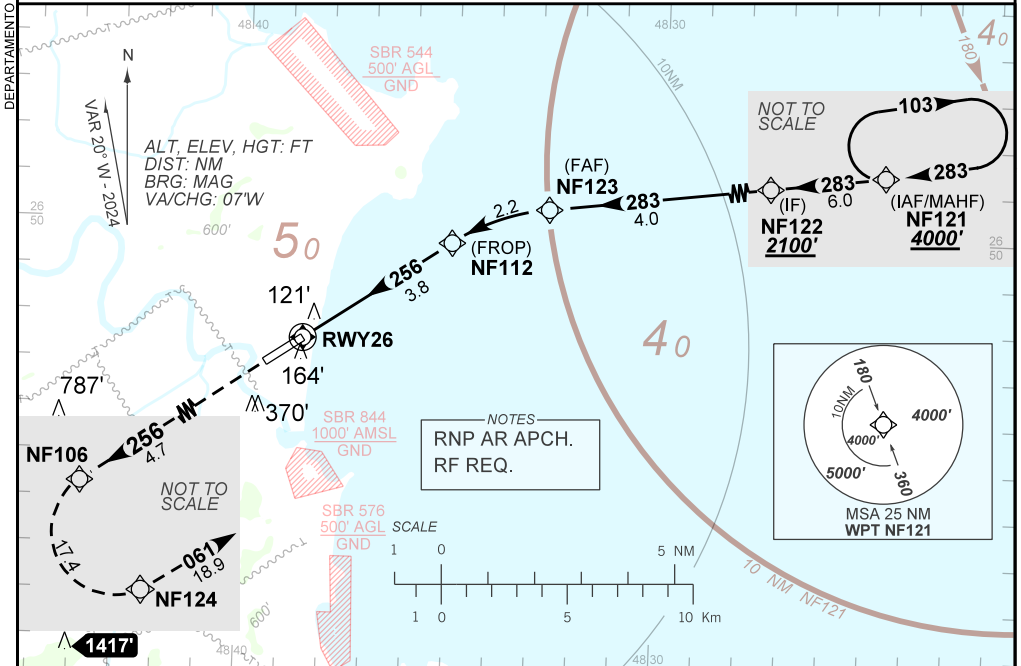
(CAT A, B, C)

ATIS 127.625	APP FLORIANÓPOLIS 119.50 119.65 128.95 129.45 120.325	TWR NAVEGANTES 118.20	GNDC NIL
------------------------	---	---------------------------------	--------------------

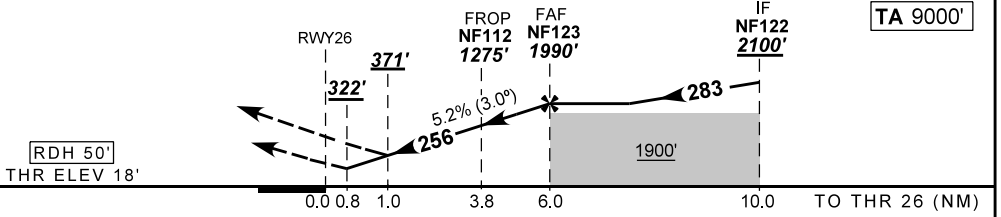
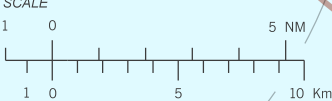
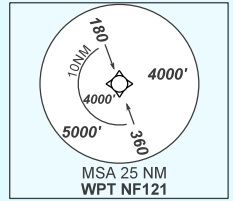
TEMP LNAV/VNAV MIN 0°C / MAX 48°C	FINAL CRS 256°	FAF: 1990'	RNP 0.3 DA / (OCH): REFER TO MNM	N/A
---	--------------------------	----------------------	--	------------

APCH Perdida: Subir para **4000'**, gradiente (*VER MNM). Manter o rumo **256** até NF106. Após, curvar à ESQUERDA até NF124. Após, rumo **067** para espera em NF121.

Missed APCH: Climb to **4000'**, gradient (*REFER TO MNM). Maintain course **256** until NF106. After, turn LEFT until NF124. After, course **067** for holding at NF121.



NOTES
RNP AR APCH.
RF REQ.



RWY26	0.8	1.0	2.0	3.0	NF112	NF123	Ground Speed (KT)	090	110	130	150	170	190
ALT	322	371	705	1023	1275	1990	FPM	500	600	700	800	NA	
(HGT)	304	353	687	1005	1257	1974	FAF-MAPT	NA					

STRAIGHT-IN	CAT	A	B	C	D	E
RNP 0.3	DA / (OCH)	322' / (304')				
Missed APCH Climb Gradient 3.5%	ALS/NO ALS/ RVR ALS (m)	NIL / 1400 / NIL				
RNP 0.3	DA / (OCH)	371' / (353')				NA
	ALS/NO ALS/ RVR ALS (m)	NIL / 1600 / NIL				

AUTORIZAÇÃO ESPECIAL PARA AERONAVE E TRIPULAÇÃO REQUERIDA

SPECIAL AUTHORIZATION FOR AIRCRAFT AND CREW REQUIRED

CHANGES: ALT, DA, HGT.

DEPARTAMENTO DE CONTROLE DO ESPAÇO AÉREO