

INSTRUMENT APPROACH
CHART (IAC)

SÃO PAULO / Congonhas (SBSP)

RNP S RWY 35R

(CAT A,B,C)

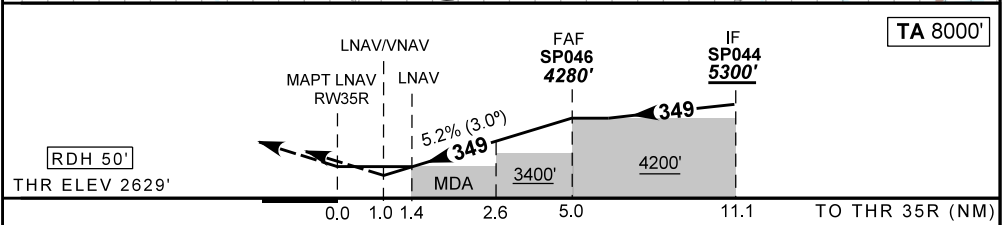
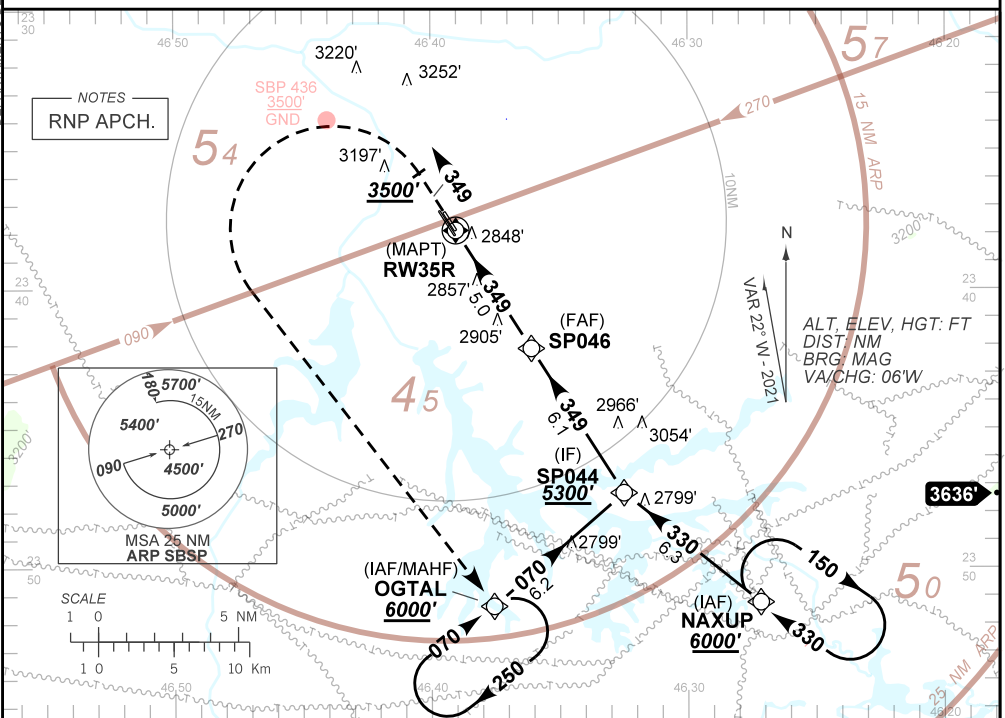
AD ELEV: 2631'

D-ATIS 127.65	APP SÃO PAULO 129.75 119.15 120.45 120.85 133.85	TWR SÃO PAULO 118.05 127.15	GNDC SÃO PAULO 121.90
------------------	--	--------------------------------	--------------------------

TEMP LNAV/VNAV MIN 0°C / MIN 50°C	FINAL CRS 349°	FAF 4280'	LNAV/VNAV DA / (OCH): 3000' / (371')	LNAV MDA / (OCH): 3110' (480')
--------------------------------------	-------------------	--------------	---	-----------------------------------

APCH Perdida: Subir para **6000'**. Manter proa **349** até cruzar **3500'**. Após, curvar à ESQUERDA direto OGTAL para espera
Missed APCH: Climb to **6000'**. Mantaining heading **349** until passing **3500'**. Then, turn LEFT direct to OGTAL for holding.

RMK: NIL.



RW35R	1.4	2.0	3.0	4.0	SP046		KT	090	110	130	150	170	190
ALT	3110	3316	3635	3953	4280		FPM	500	600	700	800		NA
(HGT)	480	687	1006	1324	1651		FAF-MAPT			NA			

STRAIGHT-IN	CAT	A	B	C	D	E
LNAV/VNAV	DA / (OCH)	3000' / (371')				
	ALS/NO ALS/ RVR ALS (m)	NIL / 1700 / NIL			NA	
LNAV	MDA / (OCH)	3110' / (480')				
	ALS/NO ALS/RVR ALS (m)	NIL / 1700 / NIL			NIL / 2200 / NIL	
CIRCLING	MDA / (OCH)	NA				
	VIS (m)	NA				

AIRAC AMDT 2105A3 20 MAY 21

SBSP_IAC_02D 1/1
IAC RNP S RWY 35R

DEPARTAMENTO DE CONTROLE DO ESPAÇO AÉREO