

STANDARD DEPARTURE CHART
INSTRUMENT (SID)

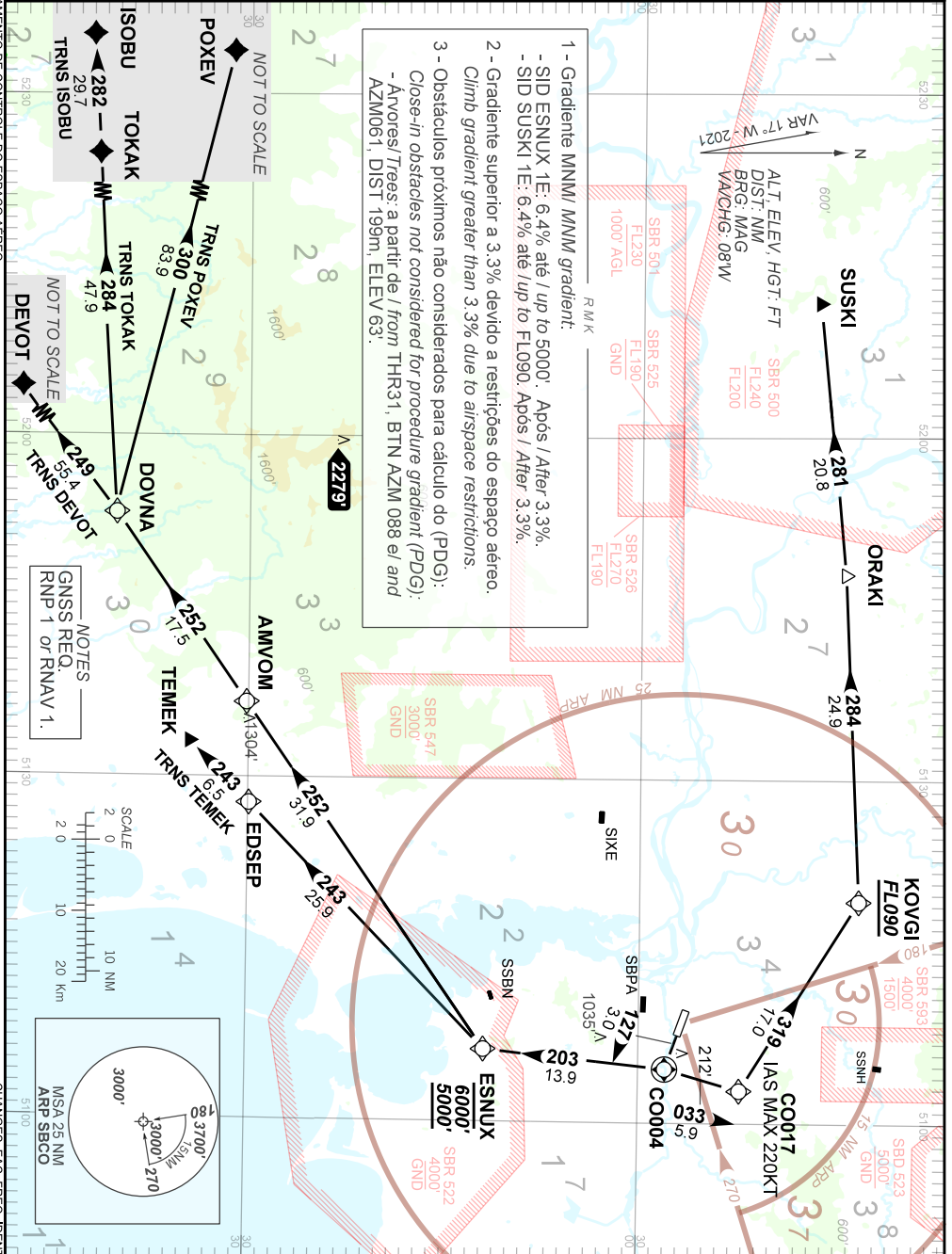
CANOAS / Campo Nossa Senhora de Fátima, MIL (SBCO)
RWY 13

RNAV ESNUX 1E - SUSKI 1E

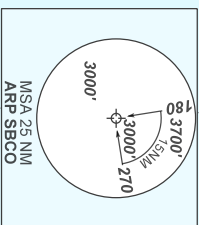
AD ELEV: 26'

TA 6000'	TWR CANOAS 118.50 122.80 (MIL)	APP PALEGRE 119.00 120.10 120.55 128.90	ACC CURITIBA 135.90 123.725 126.75 127.40
----------	-----------------------------------	---	---

1 - Gradiente MNM / MNM gradient:
- SID ESNUX 1E: 6.4% até / up to 5000'. Após / After 3.3%.
- SID SUSKI 1E: 6.4% até / up to FL090. Após / After 3.3%.
2 - Gradiente superior a 3.3% devido a restrições do espaço aéreo.
Climb gradient greater than 3.3% due to airspace restrictions.
3 - Obstáculos próximos não considerados para cálculo do (PDG):
Close-in obstacles not considered for procedure gradient (PDG):
- Árvores/Trees: a partir de / from THR31, BTN AZM 088 e/ and AZM061, DIST 199m, ELEV 63'.



NOTES
GNSR REQ.
RNP 1 or RNAV 1.



DEPARTAMENTO DE CONTROLE DO ESPAÇO AEREO