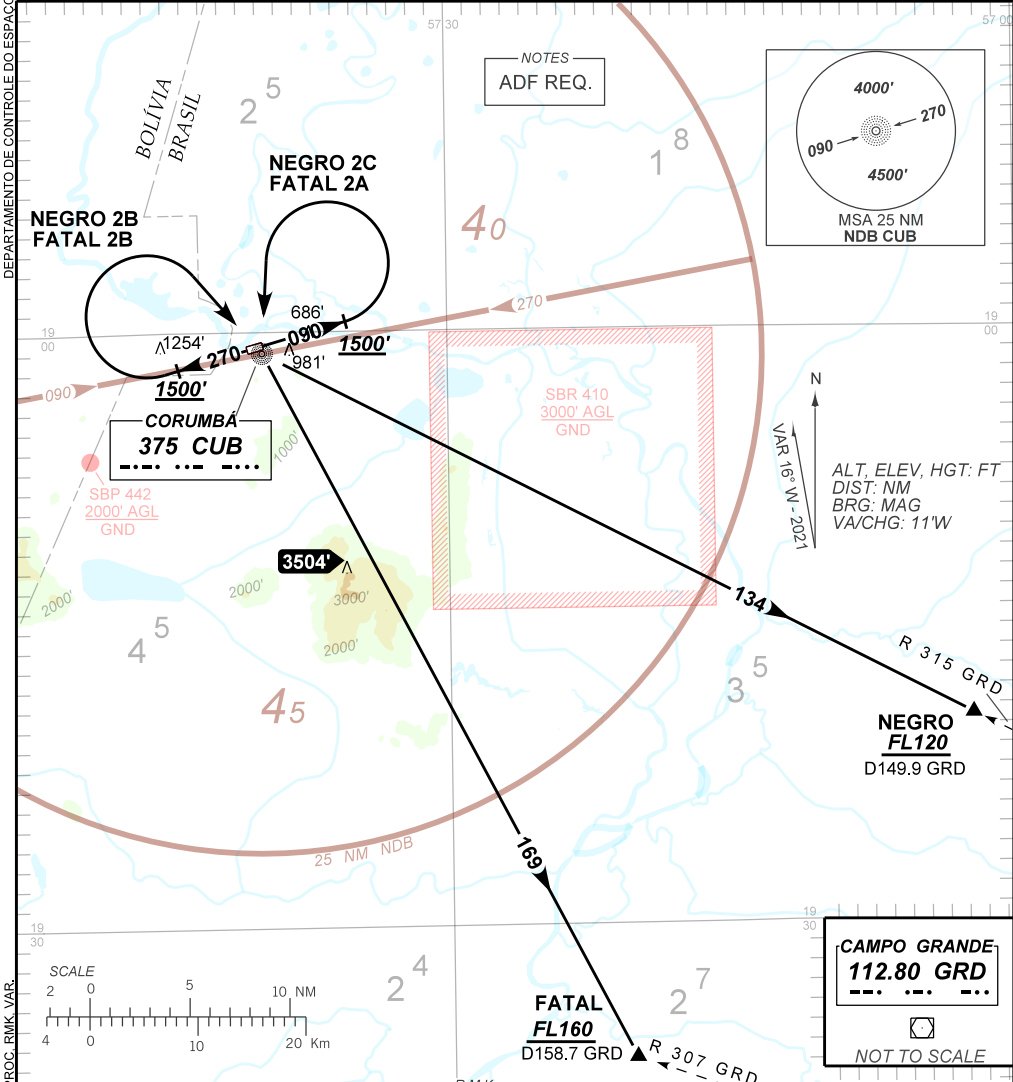


STANDARD DEPARTURE CHART
INSTRUMENT (SID)

AD ELEV: 463'

CORUMBÁ / Corumbá, INTL (SBCR)
RWY 09/27
FATAL 2A, 2B - NEGRO 2B, 2C

TA 5000'	AFIS CORUMBÁ 119.50	APP NIL	ACC CURITIBA 124.85 128.15
----------	------------------------	------------	-------------------------------



- 1 - Autorizado somente / Only authorized ACFT Cat A, B, C.
- 2 - Gradiente MNM de subida / MNM climb gradient:
RWY 09: 3.9% até / until 4500'. Após / after 3.3%.
RWY 27: 4.0% até / until 4500'. Após / after 3.3%.
- 3 - Obstáculos próximos não considerados para o cálculo do (PDG):
Close-in obstacles not considered for procedure gradient (PDG):
DEP RWY 09: Árvore / Tree: a partir de / from THR27, AZM018, DIST 117m, ELEV 491'.
Árvore / Tree: a partir de / from THR27, AZM107, DIST 388m, ELEV 529'.
DEP RWY 27: Árvore / Tree: a partir de / from THR09, AZM200, DIST 177m, ELEV 485'.
Árvore / Tree: a partir de / from THR09, AZM354, DIST 101m, ELEV 456'.