

**INSTRUMENT APPROACH  
CHART (IAC)**

**NATAL / Campo Augusto Severo, MIL (SBNT)**

**AD ELEV: 169'**

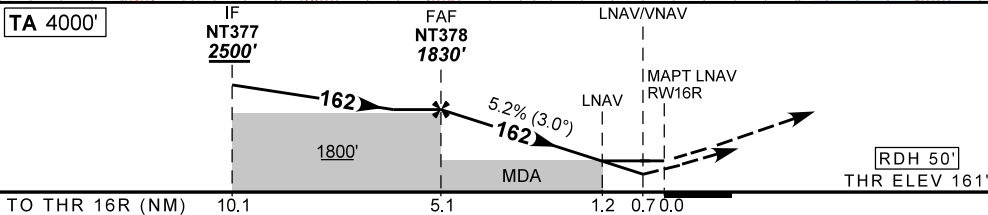
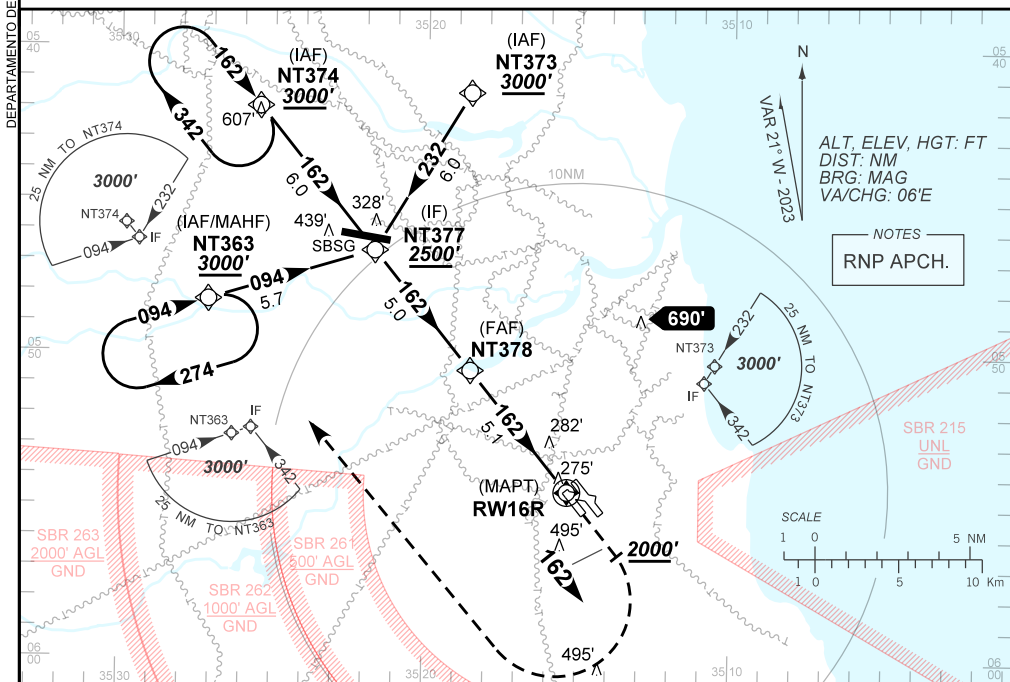
**RNP RWY 16R**

D-ATIS <b>132.65</b>	APP NATAL <b>119.30 119.65 120.65 129.80</b>	TWR NATAL <b>118.70 122.80</b>	GNDC NATAL <b>121.90</b>
-------------------------	---	-----------------------------------	-----------------------------

TEMP LNAV/VNAV <b>MIN 0°C / MAX 50°C</b>	FINAL CRS <b>162°</b>	FAF: <b>1830'</b>	LNAV/VNAV DA / (OCH): <b>436' / (275')</b>	LNAV MDA / (OCH): <b>590' / (430')</b>
---	--------------------------	----------------------	---	---

APCH Perdida: Subir para **3000'**. Manter rumo **162** até **2000'**. Após, curvar à DIREITA direto NT363 para espera.

Missed APCH: Climb to **3000'**. Maintain course **162** until **2000'**. After, turn RIGHT direct NT363 for holding.



NT378	4.0	3.0	2.0	1.2	RW16R	Ground Speed (KT)	090	110	130	150	170	190
1830	1485	1166	848	590	ALT	FPM	500	600	700	800	900	1000
1669	1324	1005	687	430	(HGT)	FAF-MAPT	NIL					

STRAIGHT-IN	CAT	A	B	C	D	E
	DA / (OCH)	436' / (275')				NA
LNAV/VNAV	ALS/NO ALS/ RVR ALS (m)	NIL / 1300 / NIL				NA
	MDA / (OCH)	590' / (430')				NA
LNAV	ALS/NO ALS/ RVR ALS (m)	NIL / 1600 / NIL		NIL / 2000 / NIL		
	MDA / (OCH)	NA				
CIRCLING	MDA / (OCH)	NA				

AIRAC AMDT 2310A2 05 OCT 23

SBNT\_IAC\_00R 1/1  
IAC RNP RWY 16R

CHANGES: AD ELEV, MINM PROC.

DEPARTAMENTO DE CONTROLE DO ESPAÇO AÉREO