

**INSTRUMENT APPROACH
CHART (IAC)**

SOROCABA / Sorocaba (SDCO)

RNP Y RWY 19

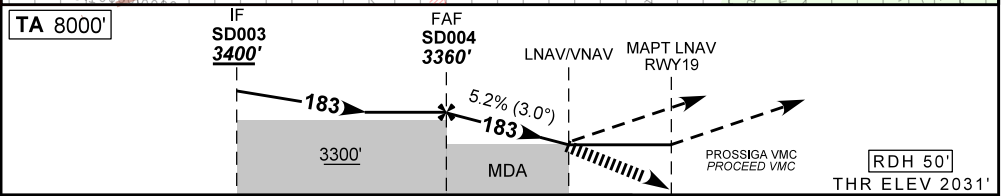
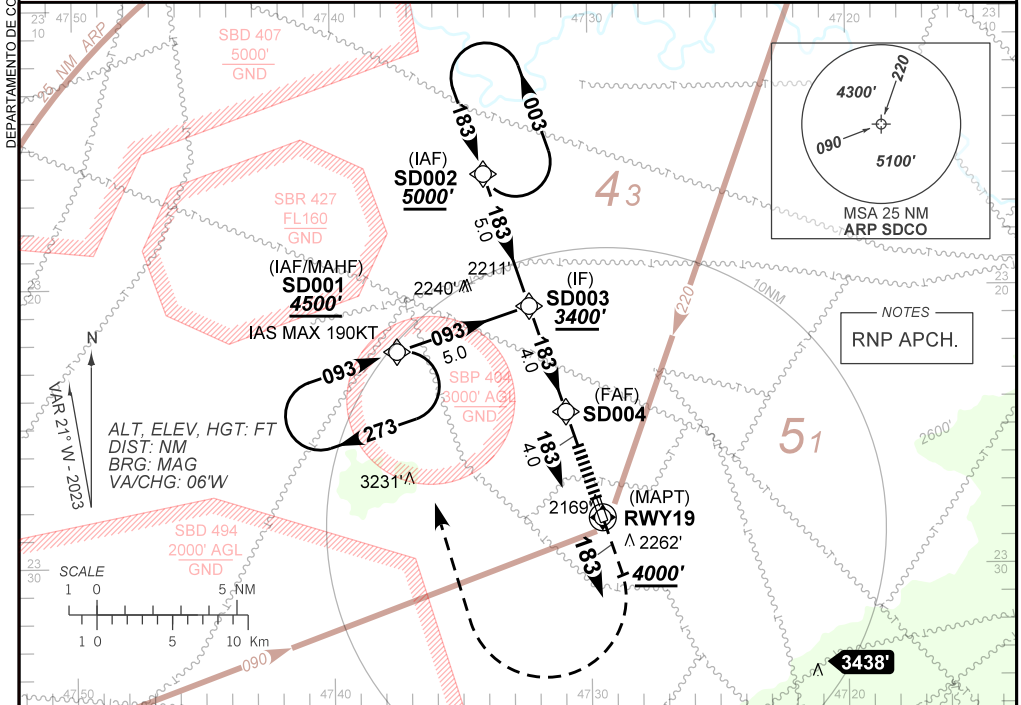
(CAT A,B,C)

AD ELEV: 2083'

ATIS 127.775	APP SÃO PAULO 129.50 119.25 119.80	AFIS SOROCABA 118.80	TWR SOROCABA 118.80	GNDC SOROCABA 121.80
TEMP LNAV/VNAV MIN -10°C / MAX 50°C	FINAL CRS 183°	FAF: 3360'	LNAV/VNAV DA / (OCH): 3031' / (1000')	LNAV MDA / (OCH): 3040' / (1000')

APCH Perdida: Subir para **4500'**. Manter rumo **183** até **4000'**. Após, curvar à DIREITA direto SD001 para espera.

Missed APCH: Climb to **4500'**. Maintain course **183** until **4000'**. After, turn RIGHT direct SD001 for holding.



TO THR 19 (NM)	8.0	4.0	3.0	0.0
----------------	-----	-----	-----	-----

		SD004	3.0	RWY 19	Ground Speed (KT)	090	110	130	150	170	190
		3360	3040	ALT	FPM	500	600	700	800	NA	
		1329	1000	(HGT)	FAF-MAPT	NIL					

STRAIGHT-IN	CAT	A	B	C	D	E
	DA / (OCH)	3031' / (1000')				
LNAV/VNAV	ALS/NO ALS/ RVR ALS (m)	NIL / 5000 / NIL			NA	
	MDA / (OCH)	3040' / (1000')				
LNAV	ALS/NO ALS/ RVR ALS (m)	NIL / 5000 / NIL				
	MDA / (OCH)					
CIRCLING	MDA / (OCH)					
	VIS (m)				NA	

CHANGES: EAC. F.