

**INSTRUMENT APPROACH
CHART (IAC)**

MACAPÁ / Alberto Alcolumbre, INTL (SBMQ)

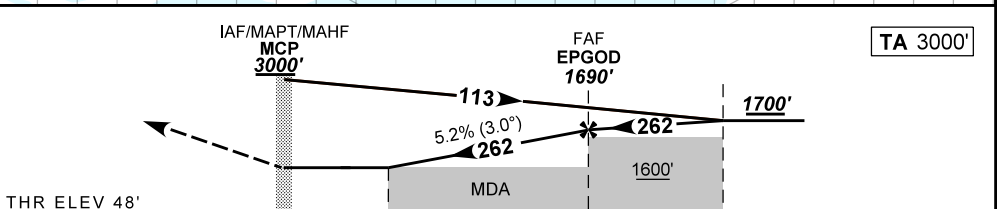
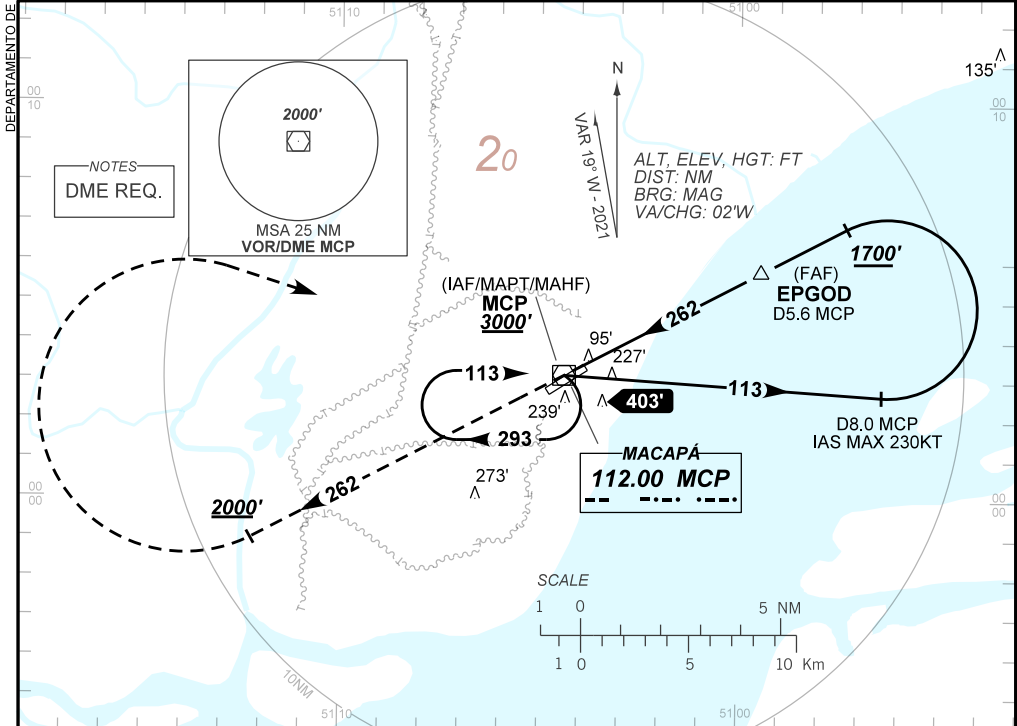
AD ELEV: 56'

VOR RWY 26

ATIS NIL	APP MACAPÁ 119.00	AFIS MACAPÁ 119.00	TWR MACAPÁ 118.00	GNDC NIL
VOR MCP 112.00 MHz	FINAL CRS 262°	FAF: 1690'	N/A	VOR MDA / (OCH): 450' / (410')

APCH Perdida: Subir para **3000'**. Manter RDL **262** do VOR MCP até cruzar **2000'**. Após, curvar à DIREITA direto VOR MCP para espera.

Missed APCH: Climb to **3000'**. Maintain **262** RDL MCP VOR until **2000'**. After, turn **RIGHT** direct MCP VOR for holding.



THR ELEV 48'	0.0	1.1	5.0	7.4	TO THR 26 (NM)
	0.6	1.7	5.6	8.0	TO MCP (DME)

RWY26	1.1	2.0	3.0	4.0	EPGOD		Ground Speed (KT)	090	110	130	150	170	190
ALT	450	735	1053	1372	1690		FPM	500	600	700	800	900	NA
(HGT)	410	687	1005	1324	1642		FAF-MAPT	NA					

STRAIGHT-IN	CAT	A	B	C	D	E
VOR	MDA / (OCH)	450' / (410')				
	ALS/NO ALS/ RVR ALS (m)	NIL / 1600 / NIL		NIL / 1900 / NIL		
CIRCLING	MDA / (OCH)	NA				
	VIS (m)	NA				

CHANGES: FREQ. LAYOUT.