

**INSTRUMENT APPROACH  
CHART (IAC)**

**URUGUAIANA / Rubem Berta (SBUG)**

**NDB RWY 28**

CAT (A, B, C)

**AD ELEV: 256'**

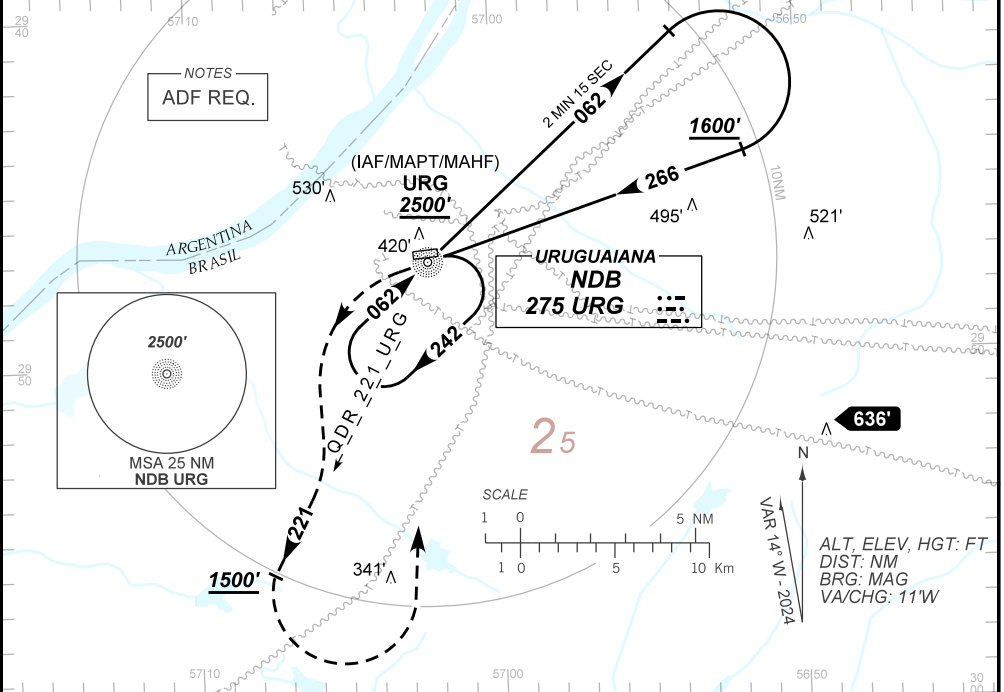
ATIS NIL	APP NIL	APP PASO DE LOS LIBRES 118.50 120.30	AFIS URUGUAIANA 118.10 125.90	GNDC NIL
-------------	------------	---	----------------------------------	-------------

NDB URG 275 KHz	FINAL CRS 266°	N/A	N/A	NDB MDA / (OCH): 800' / (570')
--------------------	-------------------	-----	-----	-----------------------------------

APCH Perdida: Subir para **2500'**, curvar à ESQUERDA para interceptar o QDR **221** do NDB URG. Após **1500'**, curvar à ESQUERDA direto NDB URG para espera.

Missed APCH: Climb to **2500'**, turn LEFT to intercept **221** QDR URG NDB. After **1500'**, turn LEFT direct URG NDB for holding.

DEPARTAMENTO DE CONTROLE DO ESPAÇO AÉREO



RWY28	NIL	Ground Speed (KT)	090	110	130	150	170	190
ALT	NIL	FPM	590			NA		
(HGT)	NIL	FAF-MAPT	NA					

STRAIGHT-IN		CAT	A	B	C	D	E	
NDB	MDA / (OCH)	800' / (570')					NA	
	ALS/NO ALS/ RVR ALS (m)	NIL / 1600 / NIL		NIL / 2600 / NIL				
CIRCLING	MDA / (OCH)	800' / (550')		930' / (680')				
	VIS (m)	NIL / 2600 / NIL		NIL / 3200 / NIL				

CHANGES: OBST, PROC, THR ELEV, VAR.